



[Go to Product page](#)

Datasheet for ABIN6147940

anti-SLC27A1 antibody (AA 347-646)

5 Images

Overview

| | |
|----------------------|--|
| Quantity: | 100 µL |
| Target: | SLC27A1 (FATP1) |
| Binding Specificity: | AA 347-646 |
| Reactivity: | Human |
| Host: | Rabbit |
| Clonality: | Polyclonal |
| Conjugate: | This SLC27A1 antibody is un-conjugated |
| Application: | Western Blotting (WB), Immunofluorescence (IF) |

Product Details

| | |
|-------------------|--|
| Immunogen: | Recombinant fusion protein containing a sequence corresponding to amino acids 347-646 of human SLC27A1 (NP_940982.1). |
| Sequence: | QPVREAERRH RVRLAVGNGL RPAIWEEFTE RFGVRQIGEF YGATECNCSI ANMDGKVGSC GFNSRILPHV YPIRLVKVNE DTMELLRDAQ GLCIPCQAGE PGLLVGQINQ QDPLRRFDGY VSESATSKKI AHSVFSKGDS AYLSGDVLM DELGYMYFRD RSGDTRWRG ENVSTTEVEG VLSRLGQTD VAVYGVAVPG VEGKAGMAAV ADPHSLDPN AIYQELQKVL APYARPIFLR LLPQVDTTGT FKIQRTRLQR EGFDPRTSD RLFFLDLKQG HYLPLNEAVY TRICSGAFAL |
| Isotype: | IgG |
| Cross-Reactivity: | Human, Mouse, Rat |
| Characteristics: | Polyclonal Antibodies |

Target Details

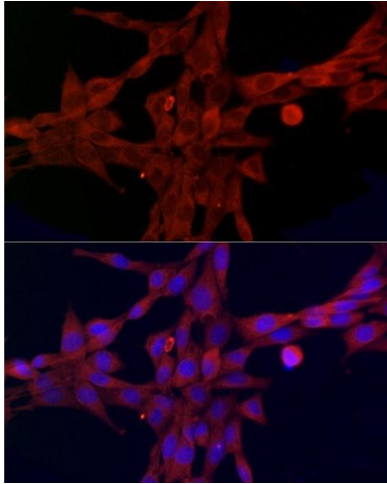
| | |
|-------------------|---|
| Target: | SLC27A1 (FATP1) |
| Alternative Name: | SLC27A1 (FATP1 Products) |
| Background: | Mediates the ATP-dependent import of long-chain fatty acids (LCFA) into the cell by mediating their translocation at the plasma membrane. Has also an acyl-CoA ligase activity for long-chain and very-long-chain fatty acids. May act directly as a bona fide transporter, or alternatively, in a cytoplasmic or membrane-associated multimeric protein complex to trap and draw fatty acids towards accumulation. Plays a pivotal role in regulating available LCFA substrates from exogenous sources in tissues undergoing high levels of beta-oxidation or triglyceride synthesis. May be involved in regulation of cholesterol metabolism (By similarity. Probably involved in fatty acid transport across the blood barrier.,SLC27A1,ACSVL5,FATP,FATP-1,FATP1,Cancer,Signal Transduction,Endocrine & Metabolism,Lipid Metabolism,Stem Cells,Cardiovascular,Lipids,Fatty Acids,SLC27A1 |
| Molecular Weight: | 51 kDa/71 kDa |
| Gene ID: | 376497 |
| UniProt: | Q6PCB7 |
| Pathways: | Inositol Metabolic Process , Regulation of Lipid Metabolism by PPARalpha |

Application Details

| | |
|--------------------|------------------------------------|
| Application Notes: | WB,1:1000 - 1:2000,IF,1:50 - 1:200 |
| Restrictions: | For Research Use only |

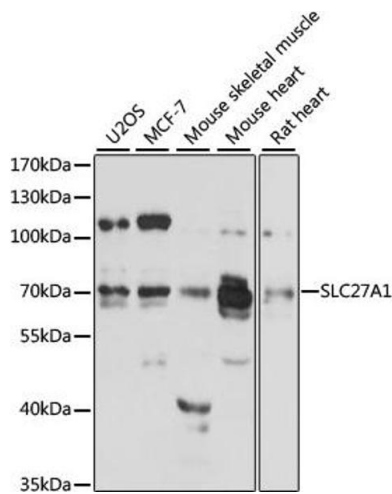
Handling

| | |
|--------------------|--|
| Format: | Liquid |
| Buffer: | PBS with 0.02 % sodium azide,50 % glycerol, pH 7.3. |
| Preservative: | Sodium azide |
| Precaution of Use: | This product contains Sodium azide: a POISONOUS AND HAZARDOUS SUBSTANCE which should be handled by trained staff only. |
| Storage: | -20 °C |
| Storage Comment: | Store at -20°C. Avoid freeze / thaw cycles. |



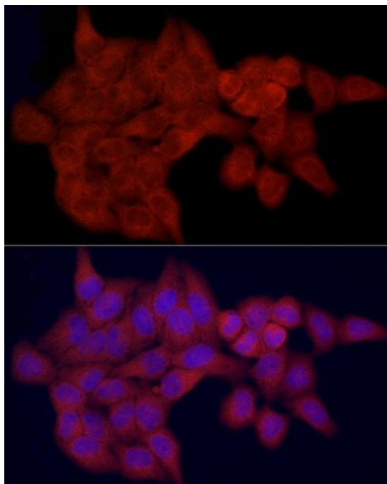
Immunofluorescence

Image 1. Immunofluorescence analysis of NIH/3T3 cells using SLC27 Rabbit pAb (2847) at dilution of 1:100 (40x lens). Blue: DAPI for nuclear staining.



Western Blotting

Image 2. Western blot analysis of extracts of various cell lines, using SLC27 antibody (2847) at 1:3000 dilution. Secondary antibody: HRP Goat Anti-Rabbit IgG (H+L) (ABIN1684268 and ABIN3020597) at 1:10000 dilution. Lysates/proteins: 25 µg per lane. Blocking buffer: 3 % nonfat dry milk in TBST. Detection: ECL Enhanced Kit (RM00021). Exposure time: 30s.



Immunofluorescence

Image 3. Immunofluorescence analysis of HeLa cells using SLC27 Rabbit pAb (2847) at dilution of 1:100 (40x lens). Blue: DAPI for nuclear staining.

Please check the [product details page](#) for more images. Overall 5 images are available for ABIN6147940.