

Datasheet for ABIN6147947  
**anti-SLC29A1 antibody (AA 200-300)**[Go to Product page](#)

## 1 Image

## Overview

Quantity:	100 µL
Target:	SLC29A1
Binding Specificity:	AA 200-300
Reactivity:	Human
Host:	Rabbit
Clonality:	Polyclonal
Conjugate:	This SLC29A1 antibody is un-conjugated
Application:	Western Blotting (WB)

## Product Details

Immunogen:	A synthetic peptide corresponding to a sequence within amino acids 200-300 of human SLC29A1 (NP_001071645.1).
Sequence:	ELSESAFGYF ITACAVIILT IICYLGLPRL EFYRYYQQLK LEGPGEQETK LDLISKGEEP RAGKEESGVS VSNSQPTNES HSIKAILKNI SVLAFSVCFI F
Isotype:	IgG
Cross-Reactivity:	Mouse, Rat
Characteristics:	Polyclonal Antibodies

## Target Details

Target:	SLC29A1
---------	---------

## Target Details

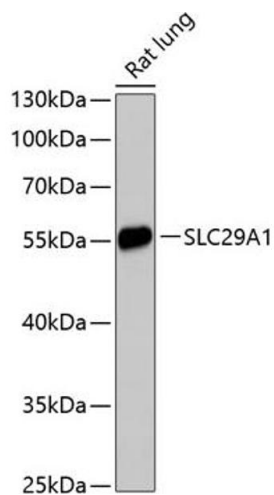
Alternative Name:	SLC29A1 ( <a href="#">SLC29A1 Products</a> )
Background:	<p>This gene is a member of the equilibrative nucleoside transporter family. The gene encodes a transmembrane glycoprotein that localizes to the plasma and mitochondrial membranes and mediates the cellular uptake of nucleosides from the surrounding medium. The protein is categorized as an equilibrative (as opposed to concentrative) transporter that is sensitive to inhibition by nitrobenzylthioinosine (NBMPR). Nucleoside transporters are required for nucleotide synthesis in cells that lack de novo nucleoside synthesis pathways, and are also necessary for the uptake of cytotoxic nucleosides used for cancer and viral chemotherapies. Multiple alternatively spliced variants, encoding the same protein, have been found for this gene.,SLC29A1,ENT1,Signal Transduction,Endocrine &amp; Metabolism,SLC29A1</p>
Molecular Weight:	50 kDa/58 kDa
Gene ID:	2030
UniProt:	<a href="#">Q99808</a>
Pathways:	<a href="#">Carbohydrate Homeostasis</a> , <a href="#">Synaptic Membrane</a>

## Application Details

Application Notes:	WB,1:500 - 1:2000
Comment:	HIGH QUALITY
Restrictions:	For Research Use only

## Handling

Format:	Liquid
Buffer:	PBS with 0.02 % sodium azide,50 % glycerol, pH 7.3.
Preservative:	Sodium azide
Precaution of Use:	This product contains Sodium azide: a POISONOUS AND HAZARDOUS SUBSTANCE which should be handled by trained staff only.
Storage:	-20 °C
Storage Comment:	Store at -20°C. Avoid freeze / thaw cycles.



#### Western Blotting

**Image 1.** Western blot analysis of extracts of rat lung, using SLC29 antibody (3205) at 1:3000 dilution. Secondary antibody: HRP Goat Anti-Rabbit IgG (H+L) (ABIN1684268 and ABIN3020597) at 1:10000 dilution. Lysates/proteins: 25 µg per lane. Blocking buffer: 3 % nonfat dry milk in TBST. Detection: ECL Enhanced Kit (RM00021). Exposure time: 90s.