

Datasheet for ABIN6147959
anti-SLC2A2 antibody (AA 1-100)



[Go to Product page](#)

1 Image

1 Publication

Overview

Quantity:	100 µL
Target:	SLC2A2
Binding Specificity:	AA 1-100
Reactivity:	Human
Host:	Rabbit
Clonality:	Polyclonal
Conjugate:	This SLC2A2 antibody is un-conjugated
Application:	Western Blotting (WB)

Product Details

Immunogen:	A synthetic peptide corresponding to a sequence within amino acids 1-100 of human GLUT2/GLUT2/SLC2A2 (NP_000331.1).
Sequence:	MTEDKVTGTL VFTVITAVLG SFQFGYDIGV INAPQQVIIS HYRHVLGVPL DDRKAINNYV INSTDELPTI SYSMNPKPTP WAEETVAAA QLITMLWSLS
Isotype:	IgG
Cross-Reactivity:	Human, Mouse, Rat
Characteristics:	Polyclonal Antibodies

Target Details

Target:	SLC2A2
---------	--------

Target Details

Alternative Name: SLC2A2 ([SLC2A2 Products](#))

Background: This gene encodes an integral plasma membrane glycoprotein of the liver, islet beta cells, intestine, and kidney epithelium. The encoded protein mediates facilitated bidirectional glucose transport. Because of its low affinity for glucose, it has been suggested as a glucose sensor. Mutations in this gene are associated with susceptibility to diseases, including Fanconi-Bickel syndrome and noninsulin-dependent diabetes mellitus (NIDDM). Alternative splicing results in multiple transcript variants of this gene.,SLC2A2,GLUT2,Cancer,Signal Transduction,Cell Biology & Developmental Biology,Endocrine & Metabolism,Lipid Metabolism,Carbohydrate metabolism,Stem Cells,SLC2A2

Molecular Weight: 44 kDa/57 kDa

Gene ID: 6514

UniProt: [P11168](#)

Pathways: [Warburg Effect](#)

Application Details

Application Notes: WB,1:500 - 1:2000

Restrictions: For Research Use only

Handling

Format: Liquid

Buffer: PBS with 0.02 % sodium azide,50 % glycerol, pH 7.3.

Preservative: Sodium azide

Precaution of Use: This product contains Sodium azide: a POISONOUS AND HAZARDOUS SUBSTANCE which should be handled by trained staff only.

Storage: -20 °C

Storage Comment: Store at -20°C. Avoid freeze / thaw cycles.

Publications

Product cited in: Gao, Wang, Wang, Hu, Chen, Li, Feng, Wong, Du: "The lysine methyltransferase SMYD2 methylates the kinase domain of type II receptor BMPR2 and stimulates bone morphogenetic protein signaling." in: **The Journal of biological chemistry**, Vol. 292, Issue 30, pp. 12702-12712,

(2017) ([PubMed](#)).

Images

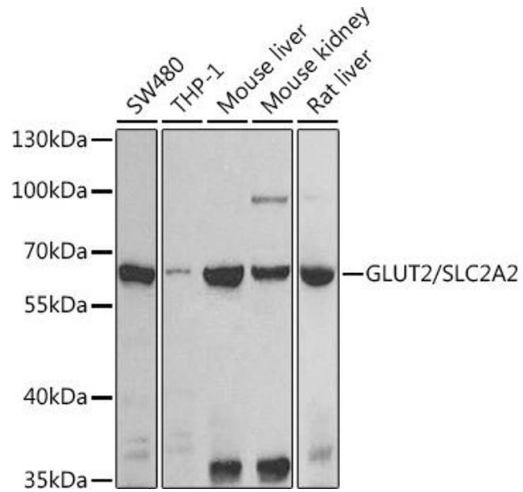
**Western Blotting**

Image 1. Western blot analysis of extracts of various cell lines, using GLUT2/GLUT2/SLC2 antibody (ABIN6134110, ABIN6147959, ABIN6147960 and ABIN6225170) at 1:1000 dilution. Secondary antibody: HRP Goat Anti-Rabbit IgG (H+L) (ABIN1684268 and ABIN3020597) at 1:10000 dilution. Lysates/proteins: 25 µg per lane. Blocking buffer: 3 % nonfat dry milk in TBST. Detection: ECL Basic Kit (RM00020). Exposure time: 90s.