



[Go to Product page](#)

Datasheet for ABIN6147961
anti-SLC2A3 antibody (AA 150-250)

3 Images

Overview

Quantity:	100 µL
Target:	SLC2A3
Binding Specificity:	AA 150-250
Reactivity:	Human
Host:	Rabbit
Clonality:	Polyclonal
Conjugate:	This SLC2A3 antibody is un-conjugated
Application:	Western Blotting (WB), Immunohistochemistry (IHC)

Product Details

Immunogen:	A synthetic peptide corresponding to a sequence within amino acids 150-250 of human GLUT3/SLC2A3 (NP_008862.1).
Sequence:	LRGAFGTLNQ LGIVVGILVA QIFGLEFILG SEELWPLLLG FTILPAILQS AALPFCPESP RFLINRKEE ENAKQILQRL WGTQDVSQDI QEMKDESARM S
Isotype:	IgG
Cross-Reactivity:	Human, Mouse, Rat
Characteristics:	Polyclonal Antibodies

Target Details

Target:	SLC2A3
---------	--------

Target Details

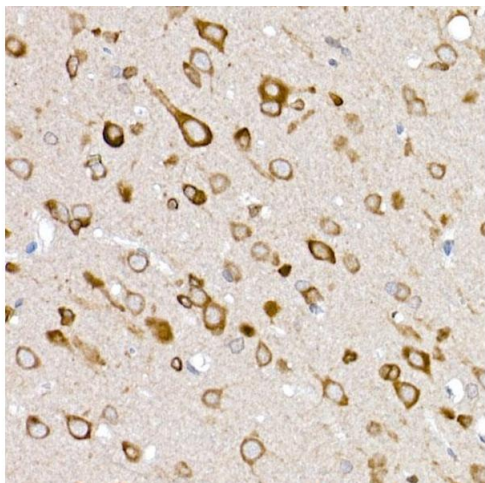
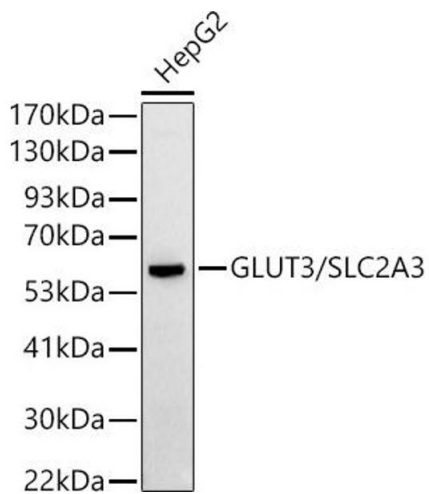
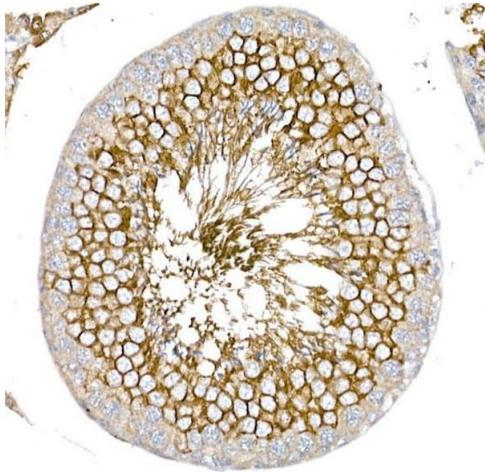
Alternative Name:	SLC2A3 (SLC2A3 Products)
Background:	Facilitative glucose transporter that can also mediate the uptake of various other monosaccharides across the cell membrane. Mediates the uptake of glucose, 2-deoxyglucose, galactose, mannose, xylose and fucose, and probably also dehydroascorbate. Does not mediate fructose transport.,SLC2A3,GLUT3,Cancer,Signal Transduction,Cell Biology & Developmental Biology,Endocrine & Metabolism,Carbohydrate metabolism,Neuroscience,Neurodegenerative Diseases,Amyloid Plaque and Neurofibrillary Tangle Formation in Alzheimer's Disease,SLC2A3
Molecular Weight:	53 kDa
Gene ID:	6515
UniProt:	P11169
Pathways:	Warburg Effect

Application Details

Application Notes:	WB,1:500 - 1:2000,IHC,1:50 - 1:200
Restrictions:	For Research Use only

Handling

Format:	Liquid
Buffer:	PBS with 0.02 % sodium azide,50 % glycerol, pH 7.3.
Preservative:	Sodium azide
Precaution of Use:	This product contains Sodium azide: a POISONOUS AND HAZARDOUS SUBSTANCE which should be handled by trained staff only.
Storage:	-20 °C
Storage Comment:	Store at -20°C. Avoid freeze / thaw cycles.



Immunohistochemistry

Image 1. Immunohistochemistry of paraffin-embedded rat testis using GLUT3/SLC2 Rabbit pAb (ABIN6134111, ABIN6147961, ABIN6147962 and ABIN6224173) at dilution of 1:50 (40x lens). Perform high pressure antigen retrieval with 10 mM citrate buffer pH 6.0 before commencing with IHC staining protocol.

Western Blotting

Image 2. Western blot analysis of extracts of HepG2 cells, using GLUT3/SLC2 antibody (ABIN6134111, ABIN6147961, ABIN6147962 and ABIN6224173) at 1:500 dilution. Secondary antibody: HRP Goat Anti-Rabbit IgG (H+L) (ABIN1684268 and ABIN3020597) at 1:10042 dilution. Lysates/proteins: 67 µg per lane. Blocking buffer: 45 % nonfat dry milk in TBST. Detection: ECL Basic Kit (RM00062). Exposure time: 90s.

Immunohistochemistry

Image 3. Immunohistochemistry of paraffin-embedded rat brain using GLUT3/SLC2 Rabbit pAb (ABIN6134111, ABIN6147961, ABIN6147962 and ABIN6224173) at dilution of 1:50 (40x lens). Perform high pressure antigen retrieval with 10 mM citrate buffer pH 6.0 before commencing with IHC staining protocol.