

Datasheet for ABIN6147973
anti-SLC30A6 antibody (AA 252-461)



[Go to Product page](#)

1 Image

Overview

Quantity:	100 µL
Target:	SLC30A6
Binding Specificity:	AA 252-461
Reactivity:	Human
Host:	Rabbit
Clonality:	Polyclonal
Conjugate:	This SLC30A6 antibody is un-conjugated
Application:	Western Blotting (WB)

Product Details

Immunogen:	Recombinant fusion protein containing a sequence corresponding to amino acids 252-461 of human SLC30A6 (NP_060434.2).
Sequence:	KVLLQTTPPH VIGQLDKLIR EVSTLDGVLE VRNEHFWTLG FGSLAGSVHV RIRRDANEQM VLAHVNTNRLY TLVSTLTVQI FKDDWIRPAL LSGPVAANVL NFSDHHVIPM PLLKGTDDLN PVTSTPAKPS SPPPEFSFNT PGKVNVPVIL LNTQTRPYGF GLNHGHTPYS SMLNQGLGVP GIGATQGLRT GFTNIPSTRYG TNNRIGQPRP
Isotype:	IgG
Cross-Reactivity:	Human, Mouse, Rat
Characteristics:	Polyclonal Antibodies

Target Details

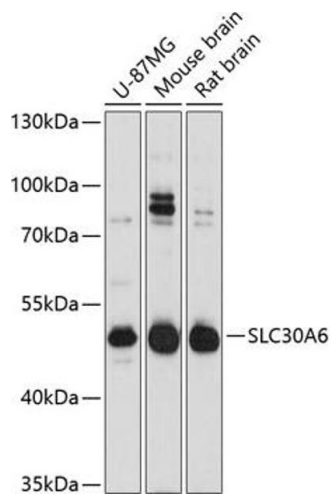
Target:	SLC30A6
Alternative Name:	SLC30A6 (SLC30A6 Products)
Background:	This gene encodes a member of a family of proteins that function as zinc transporters. This protein can regulate subcellular levels of zinc in the Golgi and vesicles. Expression of this gene is altered in the Alzheimer's disease brain plaques.,SLC30A6;MST103;MSTP103;ZNT6,SLC30A6
Molecular Weight:	47 kDa/48 kDa/51 kDa/55 kDa
Gene ID:	55676
UniProt:	Q6NXT4
Pathways:	Peptide Hormone Metabolism , SARS-CoV-2 Protein Interactome

Application Details

Application Notes:	WB,1:500 - 1:2000
Comment:	HIGH QUALITY
Restrictions:	For Research Use only

Handling

Format:	Liquid
Buffer:	PBS with 0.02 % sodium azide,50 % glycerol, pH 7.3.
Preservative:	Sodium azide
Precaution of Use:	This product contains Sodium azide: a POISONOUS AND HAZARDOUS SUBSTANCE which should be handled by trained staff only.
Storage:	-20 °C
Storage Comment:	Store at -20°C. Avoid freeze / thaw cycles.



Western Blotting

Image 1. Western blot analysis of extracts of various cell lines, using SLC30 Antibody at 1:3000 dilution. Secondary antibody: HRP Goat Anti-Rabbit IgG (H+L) (ABIN1684268 and ABIN3020597) at 1:10000 dilution. Lysates/proteins: 25 µg per lane. Blocking buffer: 3% nonfat dry milk in TBST. Detection: ECL Basic Kit (RM00020). Exposure time: 30s.