



[Go to Product page](#)

Datasheet for ABIN6148002
anti-SLC44A3 antibody (AA 60-220)

1 Image

Overview

| | |
|----------------------|--|
| Quantity: | 100 µL |
| Target: | SLC44A3 |
| Binding Specificity: | AA 60-220 |
| Reactivity: | Human |
| Host: | Rabbit |
| Clonality: | Polyclonal |
| Conjugate: | This SLC44A3 antibody is un-conjugated |
| Application: | Western Blotting (WB) |

Product Details

| | |
|-------------------|--|
| Immunogen: | Recombinant fusion protein containing a sequence corresponding to amino acids 60-220 of human SLC44A3 (NP_001107578.1). |
| Sequence: | RLLFGYDSFG NMC GKKN SPV EGAPLSGQDM TLKKHVFFMN SCNLEVKGTQ LNRMALCVSN CPEEQ LDSLE EVQFFANTSG SFLCVYSLNS FNYTHSPKAD SLCPRLPVPP SKSFPLFNRC VPQTPECYSL FASVLINDVD TLHRILSGIM SGRDTILGLC I |
| Isotype: | IgG |
| Cross-Reactivity: | Human |
| Characteristics: | Polyclonal Antibodies |

Target Details

| | |
|---------|---------|
| Target: | SLC44A3 |
|---------|---------|

Target Details

| | |
|-------------------|--|
| Alternative Name: | SLC44A3 (SLC44A3 Products) |
| Background: | SLC44A3,CTL3,Cancer,Signal Transduction,Endocrine & Metabolism,SLC44A3 |
| Molecular Weight: | 64 kDa/65 kDa/68 kDa/69 kDa/70 kDa/73 kDa |
| Gene ID: | 126969 |
| UniProt: | Q8N4M1 |

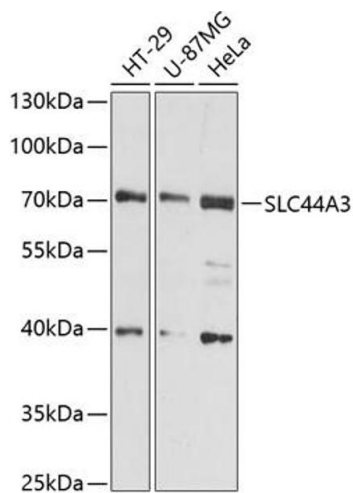
Application Details

| | |
|--------------------|-----------------------|
| Application Notes: | WB,1:500 - 1:2000 |
| Restrictions: | For Research Use only |

Handling

| | |
|--------------------|--|
| Format: | Liquid |
| Buffer: | PBS with 0.02 % sodium azide,50 % glycerol, pH 7.3. |
| Preservative: | Sodium azide |
| Precaution of Use: | This product contains Sodium azide: a POISONOUS AND HAZARDOUS SUBSTANCE which should be handled by trained staff only. |
| Storage: | -20 °C |
| Storage Comment: | Store at -20°C. Avoid freeze / thaw cycles. |

Images



Western Blotting

Image 1. Western blot analysis of extracts of various cell lines, using SLC44 antibody (ABIN6130186, ABIN6148002, ABIN6148003 and ABIN6216584) at 1:3000 dilution. Secondary antibody: HRP Goat Anti-Rabbit IgG (H+L) (ABIN1684268 and ABIN3020597) at 1:10000 dilution. Lysates/proteins: 25 µg per lane. Blocking buffer: 3 % nonfat dry milk in TBST. Detection: ECL Basic Kit (RM00020). Exposure time: 30s.