



Datasheet for ABIN6148048
anti-SLC7A9 antibody (AA 1-100)



[Go to Product page](#)

4 Images

Overview

Quantity:	100 µL
Target:	SLC7A9
Binding Specificity:	AA 1-100
Reactivity:	Human
Host:	Rabbit
Clonality:	Polyclonal
Conjugate:	This SLC7A9 antibody is un-conjugated
Application:	Western Blotting (WB), Immunofluorescence (IF)

Product Details

Immunogen:	Recombinant fusion protein containing a sequence corresponding to amino acids 1-100 of human SLC7A9 (NP_055085.1).
Sequence:	MGDTGLRKRR EDEKSIQSQE PKTTSLQKEL GLISGISIIV GTIIGSGIFV SPKSVLSNTE AVGPCLIIWA ACGVLATLGA LCFAELGTMI TKSGGEYPYL
Isotype:	IgG
Cross-Reactivity:	Human, Mouse, Rat
Characteristics:	Polyclonal Antibodies

Target Details

Target:	SLC7A9
---------	--------

Target Details

Alternative Name: SLC7A9 ([SLC7A9 Products](#))

Background: This gene encodes a protein that belongs to a family of light subunits of amino acid transporters. This protein plays a role in the high-affinity and sodium-independent transport of cystine and neutral and dibasic amino acids, and appears to function in the reabsorption of cystine in the kidney tubule. Mutations in this gene cause non-type I cystinuria, a disease that leads to cystine stones in the urinary system due to impaired transport of cystine and dibasic amino acids. Alternate transcript variants, which encode the same protein, have been found for this gene.,SLC7A9,BAT1,CSNU3,Cancer,Signal Transduction,Endocrine & Metabolism,Amino acid metabolism,SLC7A9

Molecular Weight: 53 kDa

Gene ID: 11136

UniProt: [P82251](#)

Application Details

Application Notes: WB,1:500 - 1:1000,IF,1:50 - 1:200

Comment: HIGH QUALITY

Restrictions: For Research Use only

Handling

Format: Liquid

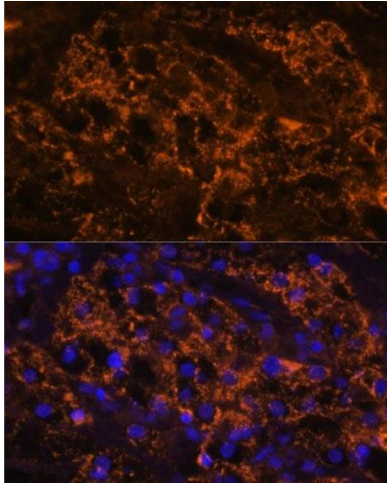
Buffer: PBS with 0.02 % sodium azide,50 % glycerol, pH 7.3.

Preservative: Sodium azide

Precaution of Use: This product contains Sodium azide: a POISONOUS AND HAZARDOUS SUBSTANCE which should be handled by trained staff only.

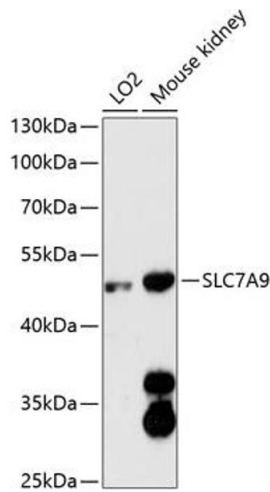
Storage: -20 °C

Storage Comment: Store at -20°C. Avoid freeze / thaw cycles.



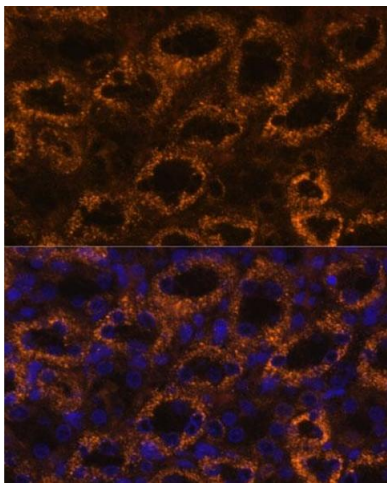
Immunofluorescence

Image 1. Immunofluorescence analysis of human kidney cancer using SLC7 antibody (ABIN6130697, ABIN6148048, ABIN6148049 and ABIN6216625) at dilution of 1:100. Blue: DAPI for nuclear staining.



Western Blotting

Image 2. Western blot analysis of extracts of various cell lines, using SLC7 antibody (ABIN6130697, ABIN6148048, ABIN6148049 and ABIN6216625) at 1:3000 dilution. Secondary antibody: HRP Goat Anti-Rabbit IgG (H+L) (ABIN1684268 and ABIN3020597) at 1:10000 dilution. Lysates/proteins: 25 µg per lane. Blocking buffer: 3 % nonfat dry milk in TBST. Detection: ECL Enhanced Kit (RM00021). Exposure time: 90s.



Immunofluorescence

Image 3. Immunofluorescence analysis of rat kidney using SLC7 antibody (ABIN6130697, ABIN6148048, ABIN6148049 and ABIN6216625) at dilution of 1:100. Blue: DAPI for nuclear staining.

Please check the [product details page](#) for more images. Overall 4 images are available for ABIN6148048.