



[Go to Product page](#)

Datasheet for ABIN6148103  
**anti-SMARCAD1 antibody (AA 1-300)**

1 Image

Overview

Quantity:	100 µL
Target:	SMARCAD1
Binding Specificity:	AA 1-300
Reactivity:	Human
Host:	Rabbit
Clonality:	Polyclonal
Conjugate:	This SMARCAD1 antibody is un-conjugated
Application:	Western Blotting (WB), Immunofluorescence (IF)

Product Details

Immunogen:	Recombinant fusion protein containing a sequence corresponding to amino acids 1-300 of human SMARCAD1 (NP_001121901.1).
Sequence:	MNLFNLDRFR FEKRNKIEEA PEATPQPSQP GPSSPISLSA EEENAEGEVS RANTPDSGIT EKTEDSSVPE TPDNERKASI SYFKNQRGIQ YIDLSSDSED VVSPNCSNTV QEKTFNKDIT IIVSEPEDE ESQGLPTMAR RNDDISELED LSELEDLKDA KLQTLKELFP QRSDNDLLKL IESTSTMDGA IAAALLMFGD AGGGPRKRKL SSSSEPYEED EFNDQSIKK TRLDHGEEEN ESAESSNWE KQESIVLKLQ KEFPNFDKQE LREVLKEHEW MYTEALESK VFAEDQDMQY
Isotype:	IgG
Cross-Reactivity:	Human, Mouse, Rat
Characteristics:	Polyclonal Antibodies

## Target Details

---

Target:	SMARCAD1
Alternative Name:	SMARCAD1 ( <a href="#">SMARCAD1 Products</a> )
Background:	<p>This gene encodes a member of the SNF subfamily of helicase proteins. The encoded protein plays a critical role in the restoration of heterochromatin organization and propagation of epigenetic patterns following DNA replication by mediating histone H3/H4 deacetylation. Mutations in this gene are associated with adermatoglyphia. Alternatively spliced transcript variants encoding multiple isoforms have been observed for this gene.,SMARCAD1,ADERM,BASNS,ETL1,HEL1,Epigenetics &amp; Nuclear Signaling,Chromatin Remodeling,SMARCAD1</p>
Molecular Weight:	68 kDa/117 kDa
Gene ID:	56916
UniProt:	<a href="#">Q9H4L7</a>

## Application Details

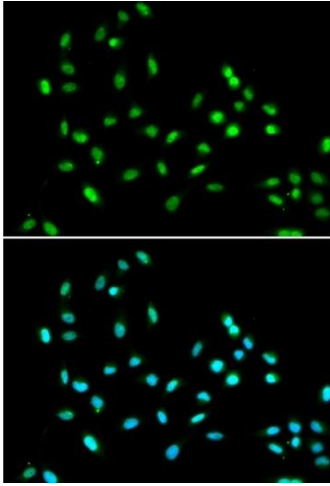
---

Application Notes:	WB,1:500 - 1:2000,IF,1:50 - 1:100
Comment:	HIGH QUALITY
Restrictions:	For Research Use only

## Handling

---

Format:	Liquid
Buffer:	PBS with 0.02 % sodium azide,50 % glycerol, pH 7.3.
Preservative:	Sodium azide
Precaution of Use:	This product contains Sodium azide: a POISONOUS AND HAZARDOUS SUBSTANCE which should be handled by trained staff only.
Storage:	-20 °C
Storage Comment:	Store at -20°C. Avoid freeze / thaw cycles.



### Immunofluorescence

**Image 1.** Immunofluorescence analysis of cells using SM antibody (ABIN6131360, ABIN6148103, ABIN6148105 and ABIN6221551). Blue: DAPI for nuclear staining.