



[Go to Product page](#)

Datasheet for ABIN6148109
anti-SMARCC1 antibody (AA 80-320)

3 Images

Overview

Quantity:	100 µL
Target:	SMARCC1
Binding Specificity:	AA 80-320
Reactivity:	Human
Host:	Rabbit
Clonality:	Polyclonal
Conjugate:	This SMARCC1 antibody is un-conjugated
Application:	Western Blotting (WB), Immunoprecipitation (IP)

Product Details

Immunogen:	Recombinant fusion protein containing a sequence corresponding to amino acids 80-320 of human SMARCC1/BAF155 (NP_003065.3).
Sequence:	LVVQLLQFQE DAFGKHVTNP AFTKLPAKCF MDFKAGGALC HILGAAYKYK NEQGWRRFDL QNPSRMDRNV EMFMNIEKTL VQNNCLTRPN IYLIPDIDLK LANKLKDIK RHQGTFTDEK SKASHHIYPY SSSQDDEEWL RPVMRKEKQV LVHWGFYPDS YDTWVHSNDV DAEIEDPPIP EKPWKVHVKW ILTDIFNEW MNEEDYEVE NRKPVSRQR ISTKNEEPVR SPERRDRKAS A
Isotype:	IgG
Cross-Reactivity:	Human
Characteristics:	Polyclonal Antibodies

Target Details

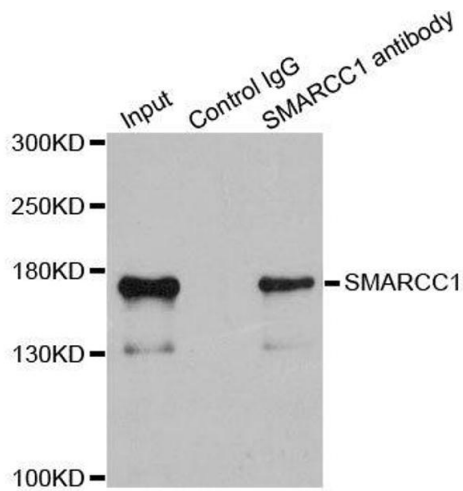
Target:	SMARCC1
Alternative Name:	SMARCC1 (SMARCC1 Products)
Background:	The protein encoded by this gene is a member of the SWI/SNF family of proteins, whose members display helicase and ATPase activities and which are thought to regulate transcription of certain genes by altering the chromatin structure around those genes. The encoded protein is part of the large ATP-dependent chromatin remodeling complex SNF/SWI and contains a predicted leucine zipper motif typical of many transcription factors.,SMARCC1,BAF155,CRACC1,Rsc8,SRG3,SWI3,Epigenetics & Nuclear Signaling,Chromatin Remodeling,SMARCC1
Molecular Weight:	122 kDa
Gene ID:	6599
UniProt:	Q92922
Pathways:	Chromatin Binding

Application Details

Application Notes:	WB,1:500 - 1:2000,IP,1:50 - 1:200
Comment:	HIGH QUALITY
Restrictions:	For Research Use only

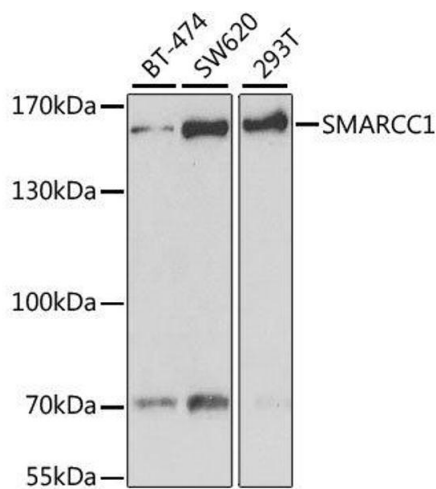
Handling

Format:	Liquid
Buffer:	PBS with 0.02 % sodium azide,50 % glycerol, pH 7.3.
Preservative:	Sodium azide
Precaution of Use:	This product contains Sodium azide: a POISONOUS AND HAZARDOUS SUBSTANCE which should be handled by trained staff only.
Storage:	-20 °C
Storage Comment:	Store at -20°C. Avoid freeze / thaw cycles.



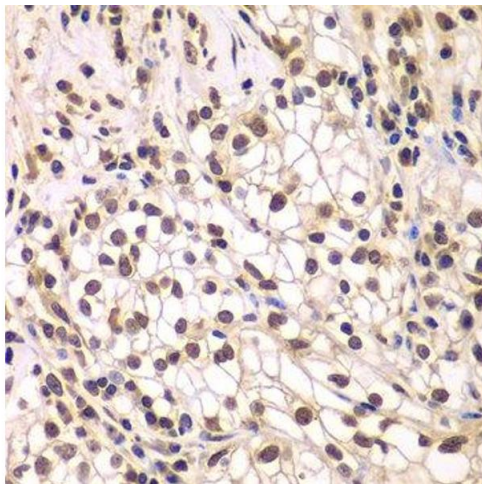
Immunoprecipitation

Image 1. Immunoprecipitation analysis of 200ug extracts of 293T cells using 1ug SMARCC1 antibody.



Western Blotting

Image 2. Western blot analysis of extracts of various cell lines, using SMARCC1 antibody.



Immunohistochemistry (Paraffin-embedded Sections)

Image 3. Immunohistochemistry of paraffin-embedded human kidney cancer using SMARCC1 antibody.