

Datasheet for ABIN6148115  
**anti-SMARCE1 antibody (AA 1-411)**



[Go to Product page](#)

3 Images

Overview

Quantity:	100 µL
Target:	SMARCE1
Binding Specificity:	AA 1-411
Reactivity:	Human
Host:	Rabbit
Clonality:	Polyclonal
Conjugate:	This SMARCE1 antibody is un-conjugated
Application:	Western Blotting (WB), Immunohistochemistry (IHC), Immunofluorescence (IF), Immunoprecipitation (IP)

Product Details

Immunogen:	Recombinant fusion protein containing a sequence corresponding to amino acids 1-411 of human BAF57/BAF57/SMARCE1 (NP_003070.3).
Sequence:	MSKRPSYAPP PTPAPATQMP STPGFVGYNP YSHLAYNNYR LGGNPGTNSR VTASSGITIP KPPKPPDKPL MPYMRYSRKV WDQVKASNPD LKLWEIGKII GGMWRDLTDE EKQEYLNEYE AEKIEYNESM KAYHNSPAYL AYINAKSRAE AALEEESRQR QSRMEKGEPY MSIQPAEDPD DYDDGFSMKH TATARFQRNH RLISEILSES VVPDVRSVVT TARMQVLKRQ VQSLMVHQRK LEAELLQIEE RHQEKKRKFL ESTDSFNEL KRLCGLKVEV DMEKIAAEAIA QAEEQARKRQ EEREKEAAEQ AERSQSSIVP EEEQAANKGE EKKDDENIPM ETEETHLEET TESQQNGEEG TSTPEDKESG QEGVDSMAEE GTSDSNTGSE SNSATVEEPP TDPIPEDEKK E
Isotype:	IgG

## Product Details

---

Cross-Reactivity: Human, Mouse, Rat

Characteristics: Polyclonal Antibodies

## Target Details

---

Target: SMARCE1

Alternative Name: SMARCE1 ([SMARCE1 Products](#))

Background: The protein encoded by this gene is part of the large ATP-dependent chromatin remodeling complex SWI/SNF, which is required for transcriptional activation of genes normally repressed by chromatin. The encoded protein, either alone or when in the SWI/SNF complex, can bind to 4-way junction DNA, which is thought to mimic the topology of DNA as it enters or exits the nucleosome. The protein contains a DNA-binding HMG domain, but disruption of this domain does not abolish the DNA-binding or nucleosome-displacement activities of the SWI/SNF complex. Unlike most of the SWI/SNF complex proteins, this protein has no yeast counterpart.,SMARCE1,BAF57,CSS5,Epigenetics & Nuclear Signaling,Chromatin Remodeling,SMARCE1

Molecular Weight: 34 kDa/37 kDa/39 kDa/41 kDa/42 kDa/46 kDa

Gene ID: 6605

UniProt: [Q969G3](#)

Pathways: [Chromatin Binding](#)

## Application Details

---

Application Notes: WB,1:500 - 1:2000,IHC,1:50 - 1:200,IF,1:50 - 1:200,IP,1:20 - 1:50

Restrictions: For Research Use only

## Handling

---

Format: Liquid

Buffer: PBS with 0.02 % sodium azide,50 % glycerol, pH 7.3.

Preservative: Sodium azide

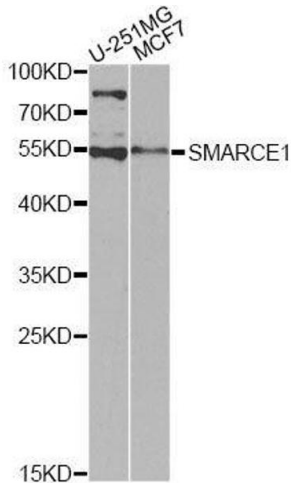
Precaution of Use: This product contains Sodium azide: a POISONOUS AND HAZARDOUS SUBSTANCE which should be handled by trained staff only.

## Handling

Storage: -20 °C

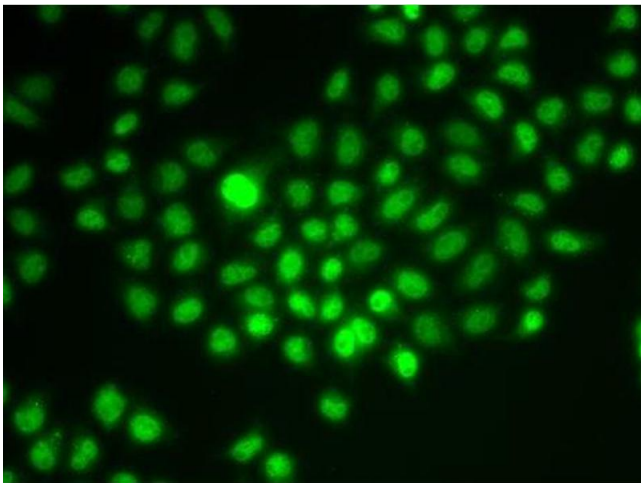
Storage Comment: Store at -20°C. Avoid freeze / thaw cycles.

## Images



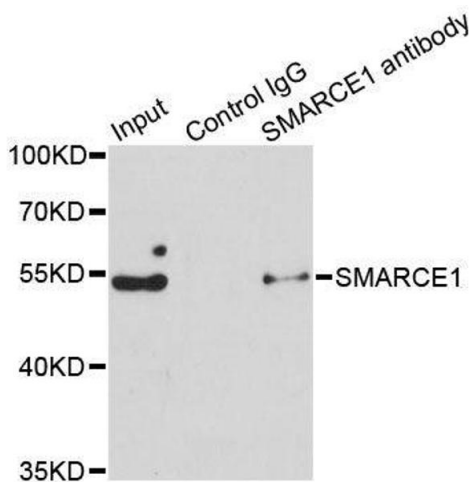
### Western Blotting

**Image 1.** Western blot analysis of extracts of various cell lines, using SMARCE1 antibody.



### Immunofluorescence

**Image 2.** Immunofluorescence analysis of HeLa cells using SMARCE1 antibody.



### Immunoprecipitation

**Image 3.** Immunoprecipitation analysis of 150ug extracts of Jurkat cells using 3ug SMARCE1 antibody.