

Datasheet for ABIN6148116
anti-SMARCE1 antibody (AA 1-411)



[Go to Product page](#)

4 Images

1 Publication

Overview

Quantity:	100 µL
Target:	SMARCE1
Binding Specificity:	AA 1-411
Reactivity:	Human
Host:	Rabbit
Clonality:	Polyclonal
Conjugate:	This SMARCE1 antibody is un-conjugated
Application:	Western Blotting (WB), Immunohistochemistry (IHC), Immunofluorescence (IF)

Product Details

Immunogen:	Recombinant fusion protein containing a sequence corresponding to amino acids 1-411 of human BAF57/BAF57/SMARCE1 (NP_003070.3).
Sequence:	MSKRPSYAPP PTPAPATQMP STPGFVGYNP YSHLAYNNYR LGGNPGTNSR VTASSGITIP KPPKPPDKPL MPYMRYSRKV WDQVKASNPD LKLWEIGKII GGMWRDLTDE EKQEYLNEYE AEKIEYNESM KAYHNSPAYL AYINAKSRAE AALEEESRQR QSRMEKGEPY MSIQPAEDPD DYDDGFSMKH TATARFQRNH RLISEILSES VVPDVRVVT TARMQVLKRQ VQSLMVHQRK LEALLQIEE RHQEKKRKFL ESTDSFNNEL KRLCGLKVEV DMEKIAAIEA QAEEQARKRQ EEREKEAAEQ AERSQSSIVP EEEQAANKGE EKKDDENIPM ETEETHLEET TESQQNGEEG TSTPEDKESG QEGVDSMAEE GTSDSNTGSE SNSATVEEPP TDPIPEDEKK E
Isotype:	IgG
Cross-Reactivity:	Human, Mouse

Product Details

Characteristics: Polyclonal Antibodies

Target Details

Target: SMARCE1

Alternative Name: SMARCE1 ([SMARCE1 Products](#))

Background: The protein encoded by this gene is part of the large ATP-dependent chromatin remodeling complex SWI/SNF, which is required for transcriptional activation of genes normally repressed by chromatin. The encoded protein, either alone or when in the SWI/SNF complex, can bind to 4-way junction DNA, which is thought to mimic the topology of DNA as it enters or exits the nucleosome. The protein contains a DNA-binding HMG domain, but disruption of this domain does not abolish the DNA-binding or nucleosome-displacement activities of the SWI/SNF complex. Unlike most of the SWI/SNF complex proteins, this protein has no yeast counterpart.,SMARCE1,BAF57,CSS5,Epigenetics & Nuclear Signaling,Chromatin Remodeling,SMARCE1

Molecular Weight: 34 kDa/37 kDa/39 kDa/41 kDa/42 kDa/46 kDa

Gene ID: 6605

UniProt: [Q969G3](#)

Pathways: [Chromatin Binding](#)

Application Details

Application Notes: WB,1:500 - 1:2000,IHC,1:50 - 1:200,IF,1:50 - 1:200

Comment: HIGH QUALITY

Restrictions: For Research Use only

Handling

Format: Liquid

Buffer: PBS with 0.02 % sodium azide,50 % glycerol, pH 7.3.

Preservative: Sodium azide

Precaution of Use: This product contains Sodium azide: a POISONOUS AND HAZARDOUS SUBSTANCE which should be handled by trained staff only.

Handling

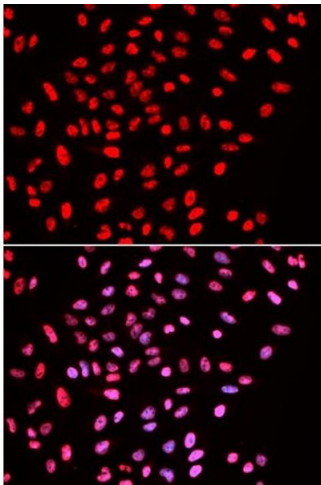
Storage: -20 °C

Storage Comment: Store at -20°C. Avoid freeze / thaw cycles.

Publications

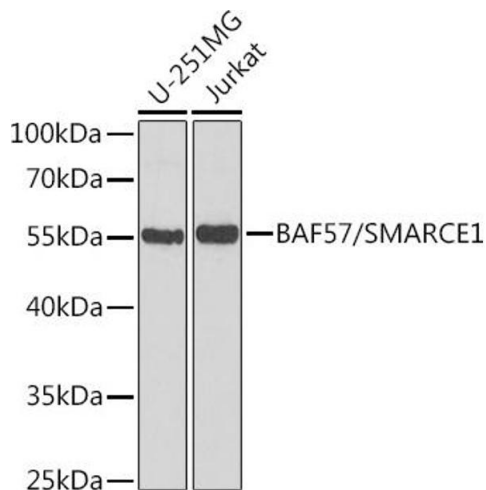
Product cited in: Miao, Yao, Li, Pu, Yao, Yang, Qi, Ren, Wang: "A dual inhibition: microRNA-552 suppresses both transcription and translation of cytochrome P450 2E1." in: **Biochimica et biophysica acta**, Vol. 1859, Issue 4, pp. 650-62, (2016) ([PubMed](#)).

Images



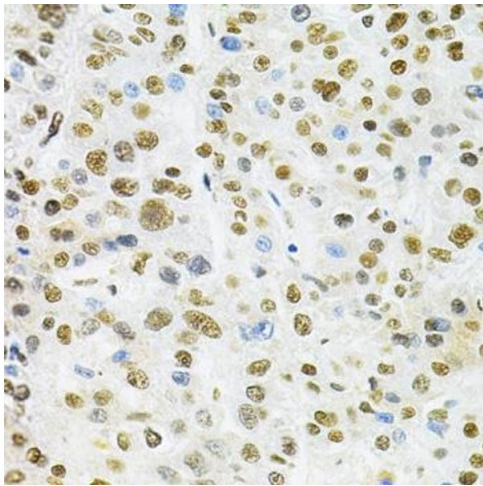
Immunofluorescence

Image 1. Immunofluorescence analysis of U2OS cells using B/B/SM antibody . Blue: DAPI for nuclear staining.



Western Blotting

Image 2. Western blot analysis of extracts of various cell lines, using B/B/SM antibody at 1:1000 dilution. Secondary antibody: HRP Goat Anti-Rabbit IgG (H+L) (ABIN1684268 and ABIN3020597) at 1:10000 dilution. Lysates/proteins: 25 µg per lane. Blocking buffer: 3% nonfat dry milk in TBST. Detection: ECL Basic Kit (RM00020). Exposure time: 90s.



Immunohistochemistry

Image 3. Immunohistochemistry of paraffin-embedded human liver cancer using B/B/SM Antibody at dilution of 1:200 (40x lens). Perform microwave antigen retrieval with 10 mM PBS buffer pH 7.2 before commencing with IHC staining protocol.

Please check the [product details page](#) for more images. Overall 4 images are available for ABIN6148116.