

Datasheet for ABIN6148146
anti-SMPD3 antibody (AA 416-655)[Go to Product page](#)

1 Image

Overview

Quantity:	100 µL
Target:	SMPD3
Binding Specificity:	AA 416-655
Reactivity:	Human
Host:	Rabbit
Clonality:	Polyclonal
Conjugate:	This SMPD3 antibody is un-conjugated
Application:	Western Blotting (WB)

Product Details

Immunogen:	Recombinant fusion protein containing a sequence corresponding to amino acids 416-655 of human SMPD3 (NP_061137.1).
Sequence:	MDVAYHCYPN KCNDDALASK GALFLKVQVG STPQDQRIVG YIACHTLHAP QEDSAIRCGQ LDLLQDWLAD FRKSTSSSSA ANPEELVAFD VCGDFNFDN CSSDDKLEQQ HSLFTHYRDP CRLGPGEEKP WAIGTLLDTN GLYDEDVCTP DNLQKVLESE EGRREYLAFP TSKSSGQKGR KELLKGNRR IDYMLHAEFG LCPDWKAEVE EFSFITQLSG LTDHLPVAMR LMVSSGEEEA
Isotype:	IgG
Cross-Reactivity:	Human, Mouse, Rat
Characteristics:	Polyclonal Antibodies

Target Details

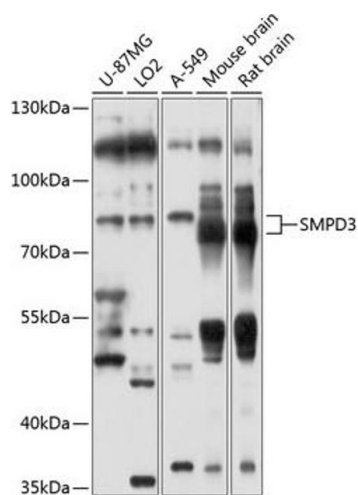
Target:	SMPD3
Alternative Name:	SMPD3 (SMPD3 Products)
Background:	Catalyzes the hydrolysis of sphingomyelin to form ceramide and phosphocholine. Ceramide mediates numerous cellular functions, such as apoptosis and growth arrest, and is capable of regulating these 2 cellular events independently. Also hydrolyzes sphingosylphosphocholine. Regulates the cell cycle by acting as a growth suppressor in confluent cells. Probably acts as a regulator of postnatal development and participates in bone and dentin mineralization. Binds to anionic phospholipids (APLs such as phosphatidylserine (PS and phosphatidic acid (PA that modulate enzymatic activity and subcellular location. May be involved in IL-1-beta-induced JNK activation in hepatocytes (By similarity. May act as a mediator in transcriptional regulation of NOS2/iNOS via the NF-kappa-B activation under inflammatory conditions (By similarity.,SMPD3,NSMASE2,Cell Biology & Developmental Biology,Apoptosis,Neuroscience,Cell Type Marker,Neurodegenerative Diseases,Amyloid Plaque and Neurofibrillary Tangle Formation in Alzheimer's Disease,Oligodendrocyte marker,Neuron marker,SMPD3
Molecular Weight:	70 kDa/71 kDa
Gene ID:	55512
UniProt:	Q9NY59
Pathways:	Hormone Transport

Application Details

Application Notes:	WB,1:1000 - 1:3000
Restrictions:	For Research Use only

Handling

Format:	Liquid
Buffer:	PBS with 0.02 % sodium azide,50 % glycerol, pH 7.3.
Preservative:	Sodium azide
Precaution of Use:	This product contains Sodium azide: a POISONOUS AND HAZARDOUS SUBSTANCE which should be handled by trained staff only.
Storage:	-20 °C
Storage Comment:	Store at -20°C. Avoid freeze / thaw cycles.



Western Blotting

Image 1. Western blot analysis of extracts of various cell lines, using SMPD3 antibody (ABIN6128775, ABIN6148146, ABIN6148147 and ABIN6214354) at 1:1000 dilution. Secondary antibody: HRP Goat Anti-Rabbit IgG (H+L) (ABIN1684268 and ABIN3020597) at 1:10000 dilution. Lysates/proteins: 25 µg per lane. Blocking buffer: 3 % nonfat dry milk in TBST. Detection: ECL Basic Kit (RM00020). Exposure time: 10s.