



[Go to Product page](#)

Datasheet for ABIN6148154

anti-Smoothelin antibody (AA 65-325)

1 Image

Overview

Quantity:	100 µL
Target:	Smoothelin (SMTN)
Binding Specificity:	AA 65-325
Reactivity:	Human
Host:	Rabbit
Clonality:	Polyclonal
Conjugate:	This Smoothelin antibody is un-conjugated
Application:	Western Blotting (WB)

Product Details

Immunogen:	Recombinant fusion protein containing a sequence corresponding to amino acids 65-325 of human SMTN (NP_001193946.1).
Sequence:	EGALRKLLEV TADLAERRRI RSAIRELQRQ ELEREEELA SKRFRAERQD NKENWLHSQQ REAEQRAALA RLAGQLESMN DVEELTALLR SAGEYEERKL IRAAIRRVRA QEIAATLAG RLYSGRPNSG SREDSKGLAA HRLEQCEVPE REEQEQAEV SKPTPTPEGT SQDVTTVTLL LRAPPGSTSS SPASPPSSPT PASPEPPLEP AEAQCLTAEV PGSPEPPPPSP PKTTSPEPQE SPTLPSTEGQ VVNKLLSGPK E
Isotype:	IgG
Cross-Reactivity:	Human, Mouse, Rat
Characteristics:	Polyclonal Antibodies

Target Details

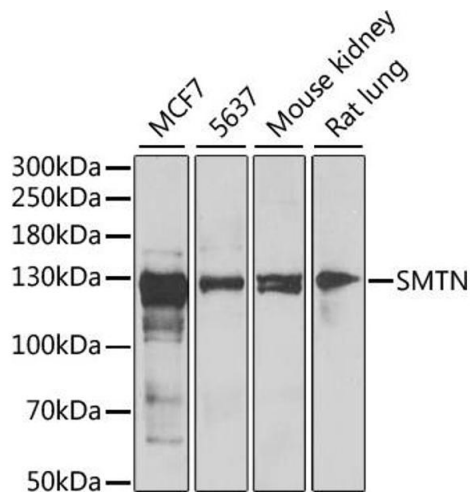
Target:	Smoothelin (SMTN)
Alternative Name:	SMTN (SMTN Products)
Background:	This gene encodes a structural protein that is found exclusively in contractile smooth muscle cells. It associates with stress fibers and constitutes part of the cytoskeleton. This gene is localized to chromosome 22q12.3, distal to the TUPLE1 locus and outside the DiGeorge syndrome deletion. Alternative splicing of this gene results in multiple transcript variants encoding distinct isoforms.,SMTN,Signal Transduction,Cell Biology & Developmental Biology,Cytoskeleton,Intermediate Filaments,Cardiovascular,Cardiovascular Markers,Smooth Muscle Cells,SMTN
Molecular Weight:	50 kDa/98 kDa/99 kDa/101 kDa
Gene ID:	6525
UniProt:	P53814

Application Details

Application Notes:	WB,1:500 - 1:2000
Comment:	HIGH QUALITY
Restrictions:	For Research Use only

Handling

Format:	Liquid
Buffer:	PBS with 0.02 % sodium azide,50 % glycerol, pH 7.3.
Preservative:	Sodium azide
Precaution of Use:	This product contains Sodium azide: a POISONOUS AND HAZARDOUS SUBSTANCE which should be handled by trained staff only.
Storage:	-20 °C
Storage Comment:	Store at -20°C. Avoid freeze / thaw cycles.



Western Blotting

Image 1. Western blot analysis of extracts of various cell lines, using SMTN antibody (ABIN6128764, ABIN6148154, ABIN6148155 and ABIN6222474) at 1:1000 dilution. Secondary antibody: HRP Goat Anti-Rabbit IgG (H+L) (ABIN1684268 and ABIN3020597) at 1:10000 dilution. Lysates/proteins: 25 µg per lane. Blocking buffer: 3 % nonfat dry milk in TBST. Detection: ECL Enhanced Kit (RM00021). Exposure time: 5 min.