

Datasheet for ABIN6148157
anti-SMU1 antibody (AA 1-220)



[Go to Product page](#)

1 Image

Overview

Quantity:	100 µL
Target:	SMU1
Binding Specificity:	AA 1-220
Reactivity:	Human
Host:	Rabbit
Clonality:	Polyclonal
Conjugate:	This SMU1 antibody is un-conjugated
Application:	Western Blotting (WB)

Product Details

Immunogen:	Recombinant fusion protein containing a sequence corresponding to amino acids 1-220 of human SMU1 (NP_060695.2).
Sequence:	MSIEIESSDV IRLIMQYLKE NSLHRALATL QEETTVSLNT VDSIESFVAD INSGHWDTVL QAIQSLKLPD KTLIDLQEYV VLELIELREL GAARSLLRQT DPMIMLKQTQ PERYIHLENL LARSYFDPRE AYPDGSSKEK RRAAIAQALA GEVSVVPPSR LMALLGQALK WQQHQGLLPP GMTIDLFRGK AAVKDVVEEK FPTQLSRHIK FGQKSHVECA
Isotype:	IgG
Cross-Reactivity:	Human, Mouse, Rat
Characteristics:	Polyclonal Antibodies

Target Details

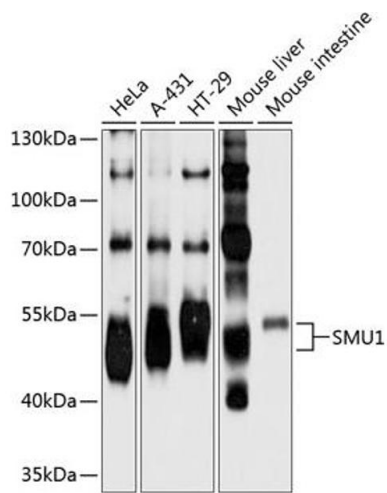
Target:	SMU1
Alternative Name:	SMU1 (SMU1 Products)
Background:	Involved in pre-mRNA splicing as a component of the spliceosome. Regulates alternative splicing of the HSPG2 pre-mRNA (By similarity. Required for normal accumulation of IK. Required for normal mitotic spindle assembly and normal progress through mitosis (By similarity.,SMU1,BWD,SMU-1,fSAP57,Epigenetics & Nuclear Signaling,SMU1
Molecular Weight:	39 kDa/57 kDa
Gene ID:	55234
UniProt:	Q2TAY7

Application Details

Application Notes:	WB,1:200 - 1:2000
Comment:	HIGH QUALITY
Restrictions:	For Research Use only

Handling

Format:	Liquid
Buffer:	PBS with 0.02 % sodium azide,50 % glycerol, pH 7.3.
Preservative:	Sodium azide
Precaution of Use:	This product contains Sodium azide: a POISONOUS AND HAZARDOUS SUBSTANCE which should be handled by trained staff only.
Storage:	-20 °C
Storage Comment:	Store at -20°C. Avoid freeze / thaw cycles.



Western Blotting

Image 1. Western blot analysis of extracts of various cell lines, using SMU1 antibody at 1:1000 dilution. Secondary antibody: HRP Goat Anti-Rabbit IgG (H+L) (ABIN1684268 and ABIN3020597) at 1:10000 dilution. Lysates/proteins: 25 µg per lane. Blocking buffer: 3% nonfat dry milk in TBST. Detection: ECL Basic Kit (RM00020). Exposure time: 10s.