



[Go to Product page](#)

Datasheet for ABIN6148171
anti-SMYD4 antibody (AA 1-260)

5 Images

Overview

Quantity:	100 µL
Target:	SMYD4
Binding Specificity:	AA 1-260
Reactivity:	Human
Host:	Rabbit
Clonality:	Polyclonal
Conjugate:	This SMYD4 antibody is un-conjugated
Application:	Western Blotting (WB), Immunohistochemistry (IHC), Immunofluorescence (IF)

Product Details

Immunogen:	Recombinant fusion protein containing a sequence corresponding to amino acids 1-260 of human SMYD4 (NP_443160.2).
Sequence:	MDLPVDEWKS YLLQKWASLP TSVQVTISTA ETLRDIFLHS SLLQPEDEL FLKRLSKGYL VGKSDAPLF YREEGNKKFQ EKDYTGAAVL YSKGVSHSRP NTEDMSLCHA NRSAALFHLG QYETCLKDIN RAQTHGYPER LQPKIMLRKA ECLVALGRLQ EASQTISDLE RNFTATPALA DVLPTLQRN LHRLKMKMQE KDSLTFSPA ALAKTLEDAA LRENEQLSN ASSSIGLCVD PLKGRCLVAT KDILPGELLV
Isotype:	IgG
Cross-Reactivity:	Human, Mouse, Rat
Characteristics:	Polyclonal Antibodies

Target Details

Target: SMYD4

Alternative Name: SMYD4 ([SMYD4 Products](#))

Background: Plays a critical role in cardiac development. Acts as a key epigenetic regulator of gene expression during cardiac development via its dual activities as a methyltransferase and negative regulator of HDAC1 (By similarity.,SMYD4,ZMYND21,Epigenetics & Nuclear Signaling,Cancer,Tumor suppressors,SMYD4

Molecular Weight: 89 kDa

Gene ID: 114826

UniProt: [Q8IYR2](#)

Application Details

Application Notes: WB,1:500 - 1:2000,IHC,1:50 - 1:200,IF,1:50 - 1:100

Comment: HIGH QUALITY

Restrictions: For Research Use only

Handling

Format: Liquid

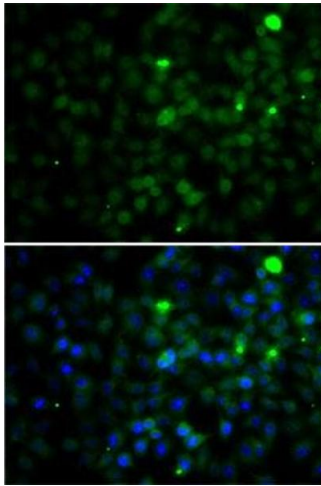
Buffer: PBS with 0.02 % sodium azide,50 % glycerol, pH 7.3.

Preservative: Sodium azide

Precaution of Use: This product contains Sodium azide: a POISONOUS AND HAZARDOUS SUBSTANCE which should be handled by trained staff only.

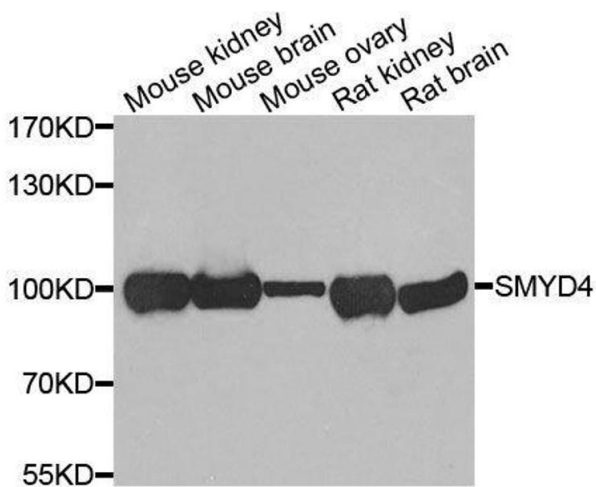
Storage: -20 °C

Storage Comment: Store at -20°C. Avoid freeze / thaw cycles.



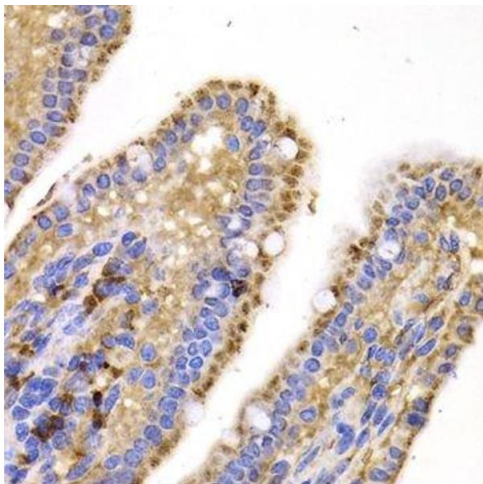
Immunofluorescence

Image 1. Immunofluorescence analysis of A-549 cells using SMYD4 antibody (ABIN6133038, ABIN6148171, ABIN6148172 and ABIN6223147). Blue: DAPI for nuclear staining.



Western Blotting

Image 2. Western blot analysis of extracts of various cell lines, using SMYD4 antibody.



Immunohistochemistry (Paraffin-embedded Sections)

Image 3. Immunohistochemistry of paraffin-embedded mouse jejunum using SMYD4 antibody.

Please check the [product details page](#) for more images. Overall 5 images are available for ABIN6148171.