

Datasheet for ABIN6148187
anti-SNAPIN antibody (AA 1-136)



[Go to Product page](#)

3 Images

Overview

Quantity:	100 µL
Target:	SNAPIN
Binding Specificity:	AA 1-136
Reactivity:	Human
Host:	Rabbit
Clonality:	Polyclonal
Conjugate:	This SNAPIN antibody is un-conjugated
Application:	Western Blotting (WB), Immunohistochemistry (IHC)

Product Details

Immunogen:	Recombinant fusion protein containing a sequence corresponding to amino acids 1-136 of human SNAPIN (NP_036569.1).
Sequence:	MAGAGSAAVS GAGTPVAGPT GRDLFAEGLL EFLRPAVQQL DSHVHAVRES QVELREQIDN LATELCRINE DQKVALDLDP YVKLLLNARR RVVLVNNILQ NAQERLRRLN HSVAKETARR RAMLDSGIYP PGSPGK
Isotype:	IgG
Cross-Reactivity:	Human, Mouse, Rat
Characteristics:	Polyclonal Antibodies

Target Details

Target:	SNAPIN
---------	--------

Target Details

Alternative Name: [SNAPIN \(SNAPIN Products\)](#)

Background: The protein encoded by this gene is a coiled-coil-forming protein that associates with the SNARE (soluble N-ethylmaleimide-sensitive fusion protein attachment protein receptor) complex of proteins and the BLOC-1 (biogenesis of lysosome-related organelles) complex. Biochemical studies have identified additional binding partners. As part of the SNARE complex, it is required for vesicle docking and fusion and regulates neurotransmitter release. The BLOC-1 complex is required for the biogenesis of specialized organelles such as melanosomes and platelet dense granules. Mutations in gene products that form the BLOC-1 complex have been identified in mouse strains that are models of Hermansky-Pudlak syndrome. Alternative splicing results in multiple transcript variants.,SNAPIN,BLOC1S7,BLOS7,BORCS3,SNAPAP,Signal Transduction,Neuroscience,Cell Type Marker,Neuron marker,Synapse marker,SNAPIN

Molecular Weight: 14 kDa

Gene ID: 23557

UniProt: [O95295](#)

Pathways: [Synaptic Membrane, Synaptic Vesicle Exocytosis](#)

Application Details

Application Notes: WB,1:200 - 1:2000,IHC,1:50 - 1:200

Comment: HIGH QUALITY

Restrictions: For Research Use only

Handling

Format: Liquid

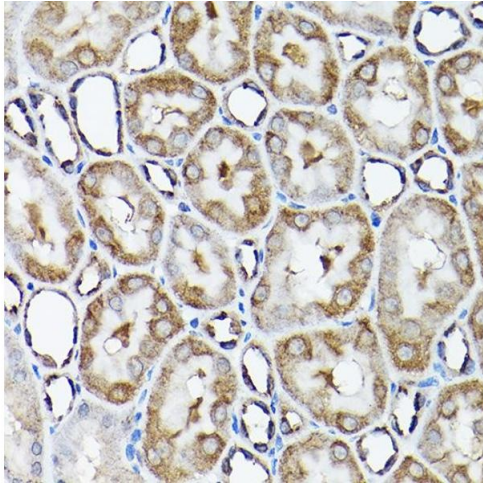
Buffer: PBS with 0.02 % sodium azide,50 % glycerol, pH 7.3.

Preservative: Sodium azide

Precaution of Use: This product contains Sodium azide: a POISONOUS AND HAZARDOUS SUBSTANCE which should be handled by trained staff only.

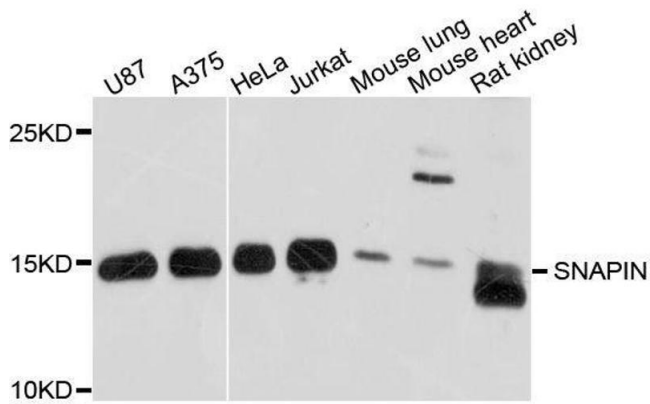
Storage: -20 °C

Storage Comment: Store at -20°C. Avoid freeze / thaw cycles.



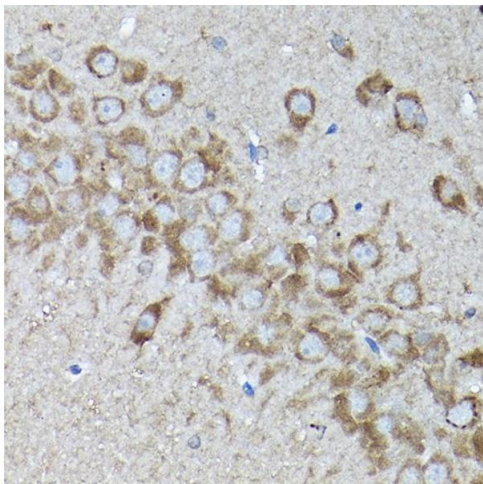
Immunohistochemistry

Image 1. Immunohistochemistry of paraffin-embedded rat kidney using SNAPIN Rabbit pAb at dilution of 1:200 (40x lens). Perform high pressure antigen retrieval with 10 mM citrate buffer pH 6.0 before commencing with IHC staining protocol.



Western Blotting

Image 2. Western blot analysis of extracts of various cell lines, using SNAPIN antibody.



Immunohistochemistry

Image 3. Immunohistochemistry of paraffin-embedded rat brain using SNAPIN Rabbit pAb at dilution of 1:200 (40x lens). Perform high pressure antigen retrieval with 10 mM citrate buffer pH 6.0 before commencing with IHC staining protocol.