

Datasheet for ABIN6148190
anti-SNCA antibody (AA 61-140)

4 Images

1 Publication

[Go to Product page](#)

Overview

Quantity:	100 µL
Target:	SNCA
Binding Specificity:	AA 61-140
Reactivity:	Human
Host:	Rabbit
Clonality:	Polyclonal
Conjugate:	This SNCA antibody is un-conjugated
Application:	Western Blotting (WB), Immunofluorescence (IF)

Product Details

Immunogen:	Recombinant fusion protein containing a sequence corresponding to amino acids 61-140 of human alpha-Synuclein (NP_000336.1).
Sequence:	EQVTNVGGAV VTGVTAVAQK TVEGAGSIAA ATGFVKKQDL GKNEEGAPQE GILEDMPVDP DNEAYEMPSE EGYQDYEP EA
Isotype:	IgG
Cross-Reactivity:	Human, Mouse, Rat
Characteristics:	Polyclonal Antibodies

Target Details

Target:	SNCA
---------	------

Target Details

Alternative Name:	SNCA (SNCA Products)
Background:	Alpha-synuclein is a member of the synuclein family, which also includes beta- and gamma-synuclein. Synucleins are abundantly expressed in the brain and alpha- and beta-synuclein inhibit phospholipase D2 selectively. SNCA may serve to integrate presynaptic signaling and membrane trafficking. Defects in SNCA have been implicated in the pathogenesis of Parkinson disease. SNCA peptides are a major component of amyloid plaques in the brains of patients with Alzheimer's disease. Alternatively spliced transcripts encoding different isoforms have been identified for this gene.,PD1,NACP,PARK1,PARK4,SNCA,Cell Biology & Developmental Biology,Apoptosis,Neuroscience,Neurodegenerative Diseases,Amyloid Plaque and Neurofibrillary Tangle Formation in Alzheimer's Disease,Dopamine Signaling in Parkinson's Disease,Neurodegenerative Diseases Markers,SNCA
Molecular Weight:	11 kDa/13 kDa/14 kDa
Gene ID:	6622
UniProt:	P37840
Pathways:	Synaptic Membrane , Regulation of G-Protein Coupled Receptor Protein Signaling , Positive Regulation of Endopeptidase Activity , Regulation of Carbohydrate Metabolic Process , Platelet-derived growth Factor Receptor Signaling , Negative Regulation of Transporter Activity , Regulation of long-term Neuronal Synaptic Plasticity

Application Details

Application Notes:	WB,1:500 - 1:2000,IF,1:50 - 1:200
Comment:	HIGH QUALITY
Restrictions:	For Research Use only

Handling

Format:	Liquid
Buffer:	PBS with 0.02 % sodium azide,50 % glycerol, pH 7.3.
Preservative:	Sodium azide
Precaution of Use:	This product contains Sodium azide: a POISONOUS AND HAZARDOUS SUBSTANCE which should be handled by trained staff only.
Storage:	-20 °C

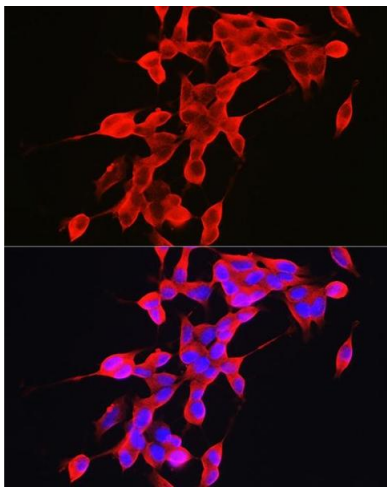
Handling

Storage Comment: Store at -20°C. Avoid freeze / thaw cycles.

Publications

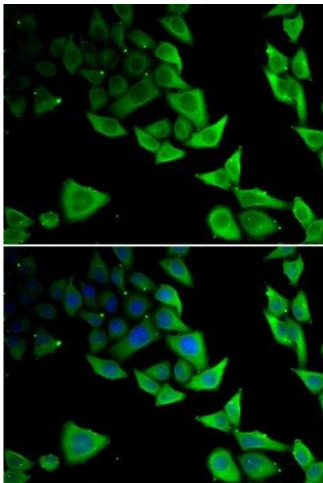
Product cited in: Hu, Chen, Zheng, Shi, Liu, Xie, Wang, Niu, Hou, Xu, Xu, Tang, Zhou, Yan, Yang, Ma, Yan: "Lactobacillus frumenti Facilitates Intestinal Epithelial Barrier Function Maintenance in Early-Weaned Piglets." in: **Frontiers in microbiology**, Vol. 9, pp. 897, (2018) ([PubMed](#)).

Images



Immunofluorescence

Image 1. Immunofluorescence analysis of SH-SY5Y cells using α -Synuclein Rabbit pAb (ABIN6129177, ABIN6148190, ABIN6148192 and ABIN6223046) at dilution of 1:100 (40x lens). Blue: DAPI for nuclear staining.

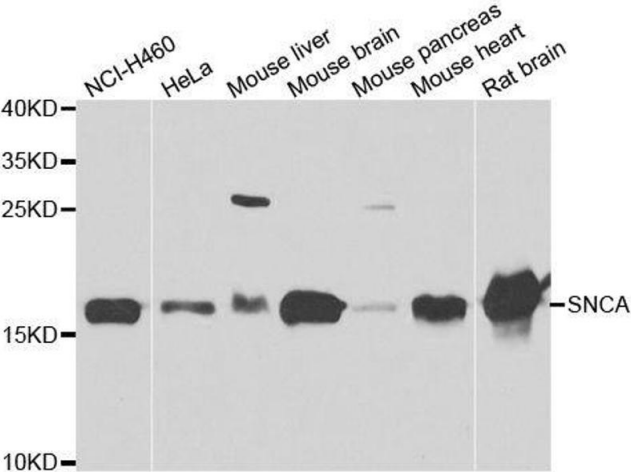


Immunofluorescence

Image 2. Immunofluorescence analysis of MCF-7 cells using SNCA antibody.

Western Blotting

Image 3. Western blot analysis of extracts of various cell lines, using SNCA antibody.



Please check the [product details page](#) for more images. Overall 4 images are available for ABIN6148190.