



Datasheet for ABIN6148202

anti-Syntaphilin antibody (AA 300-425)



[Go to Product page](#)

1 Image

Overview

Quantity:	100 µL
Target:	Syntaphilin (SNPH)
Binding Specificity:	AA 300-425
Reactivity:	Human
Host:	Rabbit
Clonality:	Polyclonal
Conjugate:	This Syntaphilin antibody is un-conjugated
Application:	Western Blotting (WB), Immunohistochemistry (IHC)

Product Details

Immunogen:	Recombinant fusion protein containing a sequence corresponding to amino acids 300-425 of human SNPH (NP_055538.2).
Sequence:	MEAGVQASCM QERAIQTDFV QYQPDLDTIL EKVTQAQVCG TDPESGDRCP ELDAHPSGPR DPNSAVVVTV GDELEAPEPI TRGPTPQRPG ANPNPGQSVS VVCPMEEEEE AAVAEKEPKS YWSRHY
Isotype:	IgG
Cross-Reactivity:	Human, Mouse, Rat
Characteristics:	Polyclonal Antibodies

Target Details

Target:	Syntaphilin (SNPH)
---------	--------------------

Target Details

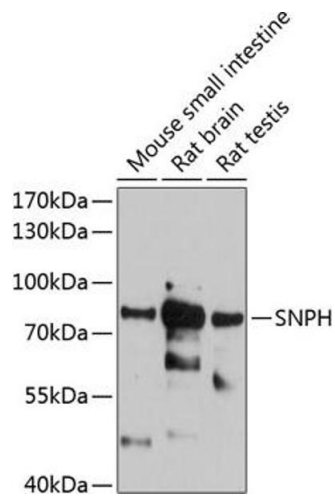
Alternative Name:	SNPH (SNPH Products)
Background:	Syntaxin-1, synaptobrevin/VAMP, and SNAP25 interact to form the SNARE complex, which is required for synaptic vesicle docking and fusion. The protein encoded by this gene is membrane-associated and inhibits SNARE complex formation by binding free syntaxin-1. Expression of this gene appears to be brain-specific. Alternative splicing results in multiple transcript variants encoding different isoforms.,SNPH,bA314N13.5,Signal Transduction,Neuroscience,SNPH
Molecular Weight:	53 kDa/57 kDa
Gene ID:	9751
UniProt:	O15079
Pathways:	Synaptic Vesicle Exocytosis

Application Details

Application Notes:	WB,1:500 - 1:2000,IHC,1:20 - 1:100
Comment:	HIGH QUALITY
Restrictions:	For Research Use only

Handling

Format:	Liquid
Buffer:	PBS with 0.02 % sodium azide,50 % glycerol, pH 7.3.
Preservative:	Sodium azide
Precaution of Use:	This product contains Sodium azide: a POISONOUS AND HAZARDOUS SUBSTANCE which should be handled by trained staff only.
Storage:	-20 °C
Storage Comment:	Store at -20°C. Avoid freeze / thaw cycles.



Western Blotting

Image 1. Western blot analysis of extracts of various cell lines, using SNPH antibody (ABIN6128797, ABIN6148202, ABIN6148203 and ABIN6215909) at 1:1000 dilution. Secondary antibody: HRP Goat Anti-Rabbit IgG (H+L) (ABIN1684268 and ABIN3020597) at 1:10000 dilution. Lysates/proteins: 25 µg per lane. Blocking buffer: 3 % nonfat dry milk in TBST. Detection: ECL Enhanced Kit (RM00021). Exposure time: 30s.