



[Go to Product page](#)

Datasheet for ABIN6148212
anti-SNRPA1 antibody (AA 1-220)

6 Images

Overview

Quantity:	100 µL
Target:	SNRPA1 (SNRPA)
Binding Specificity:	AA 1-220
Reactivity:	Human
Host:	Rabbit
Clonality:	Polyclonal
Conjugate:	This SNRPA1 antibody is un-conjugated
Application:	Western Blotting (WB), Immunohistochemistry (IHC)

Product Details

Immunogen:	Recombinant fusion protein containing a sequence corresponding to amino acids 1-220 of human SNRPA1 (NP_003081.2).
Sequence:	MVKLTAEIE QAAQYTN AVR DRELDLRGYK IPVIENLGAT LDQFDAIDFS DNEIRKLDGF PLLRRLKTL VNNNRICRIG EGLDQALPCL TELILTNNSL VELGDLPLA SLKSLTYLSI LRNPVTNKKH YRLYVIYKVP QVRVLDLFQKV KLKERQAEK MFKGKRG AQL AKDIARRSKT FNP GAGLPTD KKKGGPSPGD VEAIKNAIAN ASTLAEVERL
Isotype:	IgG
Cross-Reactivity:	Human, Mouse, Rat
Characteristics:	Polyclonal Antibodies

Target Details

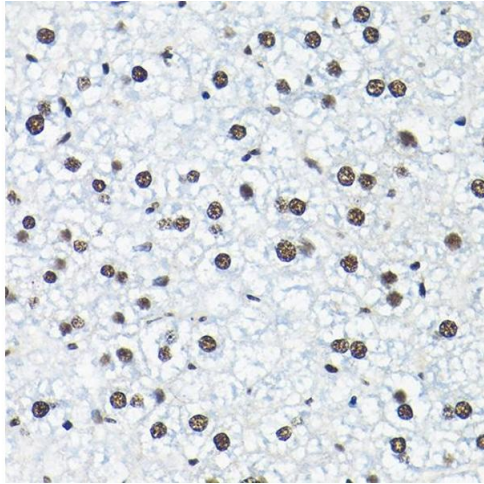
Target:	SNRPA1 (SNRPA)
Alternative Name:	SNRPA1 (SNRPA Products)
Background:	Involved in pre-mRNA splicing as component of the spliceosome. Associated with sn-RNP U2, where it contributes to the binding of stem loop IV of U2 snRNA.,SNRPA1,Lea1,Epigenetics & Nuclear Signaling,Immunology & Inflammation,SNRPA1
Molecular Weight:	28 kDa
Gene ID:	6627
UniProt:	P09661

Application Details

Application Notes:	WB,1:500 - 1:2000,IHC,1:50 - 1:200
Comment:	HIGH QUALITY
Restrictions:	For Research Use only

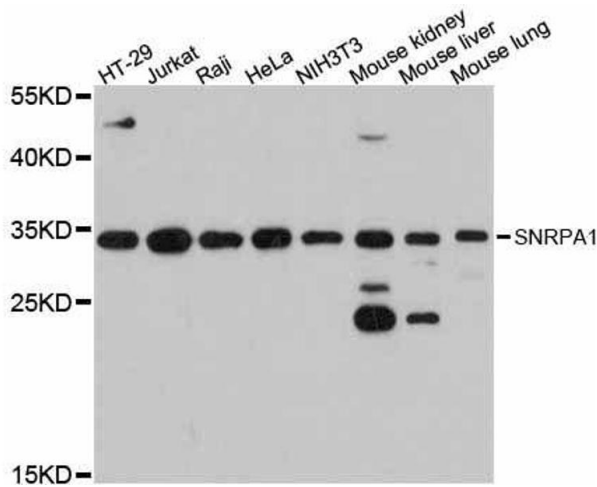
Handling

Format:	Liquid
Buffer:	PBS with 0.02 % sodium azide,50 % glycerol, pH 7.3.
Preservative:	Sodium azide
Precaution of Use:	This product contains Sodium azide: a POISONOUS AND HAZARDOUS SUBSTANCE which should be handled by trained staff only.
Storage:	-20 °C
Storage Comment:	Store at -20°C. Avoid freeze / thaw cycles.



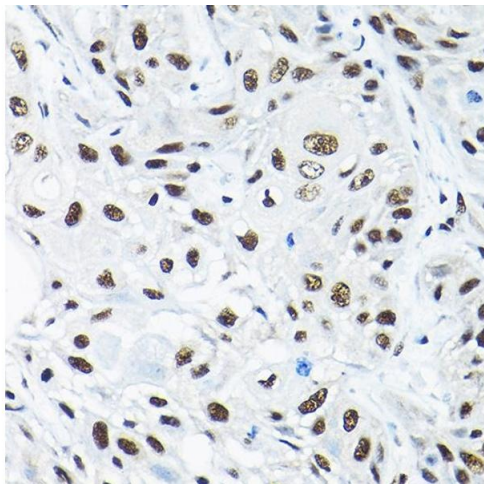
Immunohistochemistry

Image 1. Immunohistochemistry of paraffin-embedded mouse liver using SNRPA1 Rabbit pAb (2161) at dilution of 1:200 (40x lens). Perform high pressure antigen retrieval with 10 mM citrate buffer pH 6.0 before commencing with IHC staining protocol.



Western Blotting

Image 2. Western blot analysis of extracts of various cell lines, using SNRPA1 antibody.



Immunohistochemistry

Image 3. Immunohistochemistry of paraffin-embedded human esophageal cancer using SNRPA1 Rabbit pAb (2161) at dilution of 1:200 (40x lens). Perform high pressure antigen retrieval with 10 mM citrate buffer pH 6.0 before commencing with IHC staining protocol.

Please check the [product details page](#) for more images. Overall 6 images are available for ABIN6148212.