



[Go to Product page](#)

Datasheet for ABIN6148251
anti-SNX32 antibody (AA 144-403)

2 Images

Overview

Quantity:	100 µL
Target:	SNX32
Binding Specificity:	AA 144-403
Reactivity:	Human
Host:	Rabbit
Clonality:	Polyclonal
Conjugate:	This SNX32 antibody is un-conjugated
Application:	Western Blotting (WB), Immunofluorescence (IF)

Product Details

Immunogen:	Recombinant fusion protein containing a sequence corresponding to amino acids 144-403 of human SNX32 (NP_689973.2).
Sequence:	RLAAHPTLRR DHNFFVFLEY GQDLSVRGKN RKELGGFLR NIVKSADEAL ITGMSGLEKEV DDFFEHERTF LLEYHTRIRD ACLRADRVMR AHKCLADDYI PISAALSSLG TQEVNQLRRTS FLKLAELFER LRKLEGRVAS DEDLKLSDML RYYMRDSQAA KDLLYRRLRA LADYENANKA LDKARTRNRE VRPAESHQQL CCQRFERLSD SAKQELMDFK SRRVSSFRKN LIELAELELK HAKASTLILR NTLVALKGEP
Isotype:	IgG
Cross-Reactivity:	Human, Mouse, Rat
Characteristics:	Polyclonal Antibodies

Target Details

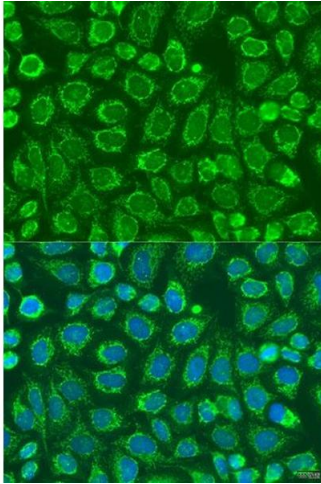
Target:	SNX32
Alternative Name:	SNX32 (SNX32 Products)
Background:	May be involved in several stages of intracellular trafficking.,SNX32,SNX6B,Signal Transduction,SNX32
Molecular Weight:	31 kDa/46 kDa
Gene ID:	254122
UniProt:	Q86XE0

Application Details

Application Notes:	WB,1:500 - 1:2000,IF,1:50 - 1:200
Comment:	HIGH QUALITY
Restrictions:	For Research Use only

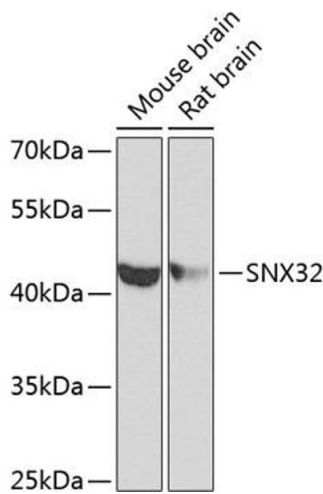
Handling

Format:	Liquid
Buffer:	PBS with 0.02 % sodium azide,50 % glycerol, pH 7.3.
Preservative:	Sodium azide
Precaution of Use:	This product contains Sodium azide: a POISONOUS AND HAZARDOUS SUBSTANCE which should be handled by trained staff only.
Storage:	-20 °C
Storage Comment:	Store at -20°C. Avoid freeze / thaw cycles.



Immunofluorescence

Image 1. Immunofluorescence analysis of U2OS cells using SNX32 antibody (ABIN6133108, ABIN6148251, ABIN6148252 and ABIN6224028) at dilution of 1:100. Blue: DAPI for nuclear staining.



Western Blotting

Image 2. Western blot analysis of extracts of various cell lines, using SNX32 antibody (ABIN6133108, ABIN6148251, ABIN6148252 and ABIN6224028) at 1:1000 dilution. Secondary antibody: HRP Goat Anti-Rabbit IgG (H+L) (ABIN1684268 and ABIN3020597) at 1:10000 dilution. Lysates/proteins: 25 µg per lane. Blocking buffer: 3 % nonfat dry milk in TBST. Detection: ECL Basic Kit (RM00020). Exposure time: 90s.