



[Go to Product page](#)

Datasheet for ABIN6148323
anti-SPAG8 antibody (AA 220-420)

1 Image

Overview

Quantity:	100 µL
Target:	SPAG8
Binding Specificity:	AA 220-420
Reactivity:	Human
Host:	Rabbit
Clonality:	Polyclonal
Conjugate:	This SPAG8 antibody is un-conjugated
Application:	Western Blotting (WB), Immunohistochemistry (IHC)

Product Details

Immunogen:	Recombinant fusion protein containing a sequence corresponding to amino acids 220-420 of human SPAG8 (NP_758516.1).
Sequence:	LVADRVPNYT SWSQHCPWEP QKQPPWEFLQ VLEPGARGLW KPPDIKGKLM VCYETLPRGQ CLLYNWEER ATNHLDQVPS MQDGSESEFFF RHGHRGLLTM QLKSPMPSS TQKDSYQPPG NVYWPLRGKR EAMLEMLLQH QICKEVQAEQ EPTRKLFVEV SVTHHDYRME LAQAGTPAPT KPHDYRQEQP ETFWIQRAPQ L
Isotype:	IgG
Cross-Reactivity:	Mouse, Rat
Characteristics:	Polyclonal Antibodies

Target Details

Target:	SPAG8
Alternative Name:	SPAG8 (SPAG8 Products)
Background:	<p>The correlation of anti-sperm antibodies with cases of unexplained infertility implicates a role for these antibodies in blocking fertilization. Improved diagnosis and treatment of immunologic infertility, as well as identification of proteins for targeted contraception, are dependent on the identification and characterization of relevant sperm antigens. The protein encoded by this gene is recognized by sperm agglutinating antibodies from an infertile woman. This protein is localized in germ cells of the testis at all stages of spermatogenesis and is localized to the acrosomal region of mature spermatozoa. This protein interacts with ACT (activator of CREM in testis) and may play a role in CREM (cAMP response element modulator)-ACT-mediated gene transcription during spermatogenesis. This protein may also play a role in spermatogenesis by regulating microtubule formation and cell division. Alternatively spliced variants that encode different protein isoforms have been described but the full-length sequences of only two have been determined.,SPAG8,BS-84,CILD28,CT142,HSD-1,SMP1,SPAG3,hSMP-1,Cell Biology & Developmental Biology,Cell Cycle,Cell differentiation,Stem Cells,Germline Stem Cells,SPAG8</p>
Molecular Weight:	44 kDa/51 kDa/53 kDa
Gene ID:	26206
UniProt:	Q99932

Application Details

Application Notes:	WB,1:500 - 1:2000,IHC,1:50 - 1:200
Comment:	HIGH QUALITY
Restrictions:	For Research Use only

Handling

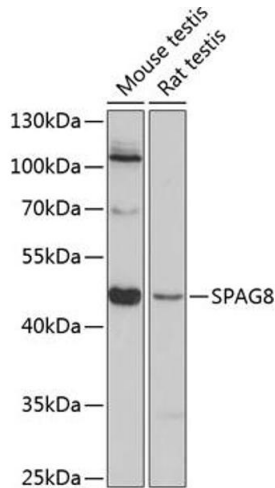
Format:	Liquid
Buffer:	PBS with 0.02 % sodium azide,50 % glycerol, pH 7.3.
Preservative:	Sodium azide
Precaution of Use:	This product contains Sodium azide: a POISONOUS AND HAZARDOUS SUBSTANCE which should be handled by trained staff only.

Handling

Storage: -20 °C

Storage Comment: Store at -20°C. Avoid freeze / thaw cycles.

Images



Western Blotting

Image 1. Western blot analysis of extracts of various cell lines, using SP antibody (ABIN6129712, ABIN6148323, ABIN6148324 and ABIN6224831) at 1:3000 dilution. Secondary antibody: HRP Goat Anti-Rabbit IgG (H+L) (ABIN1684268 and ABIN3020597) at 1:10000 dilution. Lysates/proteins: 25 µg per lane. Blocking buffer: 3 % nonfat dry milk in TBST. Detection: ECL Basic Kit (RM00020). Exposure time: 90s.