

Datasheet for ABIN6148349
anti-SPIB antibody (AA 1-262)



[Go to Product page](#)

1 Image

Overview

Quantity:	100 µL
Target:	SPIB
Binding Specificity:	AA 1-262
Reactivity:	Human
Host:	Rabbit
Clonality:	Polyclonal
Conjugate:	This SPIB antibody is un-conjugated
Application:	Western Blotting (WB)

Product Details

Immunogen:	Recombinant fusion protein containing a sequence corresponding to amino acids 1-262 of human SPIB (NP_003112.2).
Sequence:	MLALEAAQLD GPHFSCLYPD GVFYDLDSCK HSSYPDSEGA PDSLWDWTVVA PPVPATPYEA FDPAAAFVSH PQAAQLCYEP PTYSPAGNLE LAPSLEAPGP GLPAYPTENF ASQTLVPPAY APYPSPVLSE EEDLPLDSPA LEVSDSESEDE ALVAGPEGKG SEAGTRKKLR LYQFLLGLLT RGDMRECVWW VEPGAGVFQF SSKHKELLAR RWGQQKGNRK RMTYQKLARA LRNYAKTGEI RKVKRKLTYQ FDSALLPAVR RA
Isotype:	IgG
Cross-Reactivity:	Human
Characteristics:	Polyclonal Antibodies

Target Details

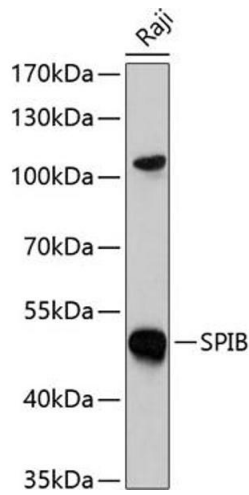
Target:	SPIB
Alternative Name:	SPIB (SPIB Products)
Background:	The protein encoded by this gene is a transcriptional activator that binds to the PU-box (5'-GAGGAA-3') and acts as a lymphoid-specific enhancer. Four transcript variants encoding different isoforms have been found for this gene.,SPIB,SPI-B,Epigenetics & Nuclear Signaling,Transcription Factors,SPIB
Molecular Weight:	18 kDa/19 kDa/28 kDa
Gene ID:	6689
UniProt:	Q01892

Application Details

Application Notes:	WB,1:500 - 1:2000
Restrictions:	For Research Use only

Handling

Format:	Liquid
Buffer:	PBS with 0.02 % sodium azide,50 % glycerol, pH 7.3.
Preservative:	Sodium azide
Precaution of Use:	This product contains Sodium azide: a POISONOUS AND HAZARDOUS SUBSTANCE which should be handled by trained staff only.
Storage:	-20 °C
Storage Comment:	Store at -20°C. Avoid freeze / thaw cycles.



Western Blotting

Image 1. Western blot analysis of extracts of Raji cells, using SPIB antibody at 1:1000 dilution. Secondary antibody: HRP Goat Anti-Rabbit IgG (H+L) (ABIN1684268 and ABIN3020597) at 1:10000 dilution. Lysates/proteins: 25 µg per lane. Blocking buffer: 3 % nonfat dry milk in TBST. Detection: ECL Basic Kit (RM00020). Exposure time: 60s.