



[Go to Product page](#)

Datasheet for ABIN6148363
anti-CD43 antibody (AA 276-400)

8 Images

Overview

Quantity:	100 µL
Target:	CD43 (SPN)
Binding Specificity:	AA 276-400
Reactivity:	Human
Host:	Rabbit
Clonality:	Polyclonal
Conjugate:	This CD43 antibody is un-conjugated
Application:	Western Blotting (WB), Immunohistochemistry (IHC), Immunofluorescence (IF)

Product Details

Immunogen:	Recombinant fusion protein containing a sequence corresponding to amino acids 276-400 of human SPN (NP_003114.1).
Sequence:	LWRRRQKRRT GALVLSRGGK RNVVDAWAG PAQVPEEGAV TVTVGGSSGGD KGSGFPDGEK SSRRPTLTTF FGRRKSRQGS LAMEELKSGS GPSLKGEEEP LVASEDGAVD APAPDEPEGG DGAAP
Isotype:	IgG
Cross-Reactivity:	Human, Mouse, Rat
Characteristics:	Polyclonal Antibodies

Target Details

Target:	CD43 (SPN)
---------	------------

Target Details

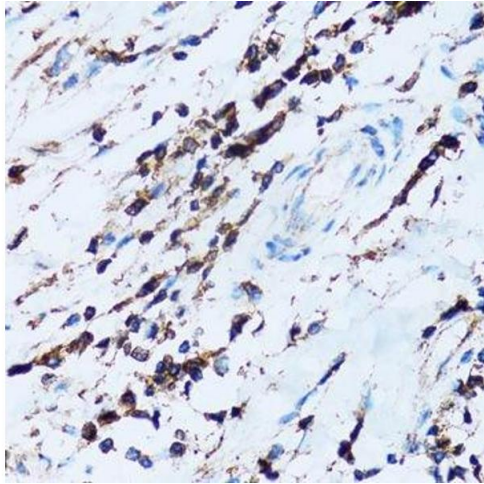
Alternative Name:	SPN (SPN Products)
Background:	<p>The protein encoded by this gene is a major sialoglycoprotein found on the surface of thymocytes, T lymphocytes, monocytes, granulocytes, and some B lymphocytes. It may be part of a physiologic ligand-receptor complex involved in T-cell activation. During T-cell activation, this protein is actively removed from the T-cell-APC (antigen-presenting cell) contact site, suggesting a negative regulatory role in adaptive immune response.,SPN,CD43,GALGP,GPL115,LSN,Cell Biology & Developmental Biology,Apoptosis,Immunology & Inflammation,CD markers,Stem Cells,Hematopoietic Progenitors,SPN</p>
Molecular Weight:	40 kDa
Gene ID:	6693
UniProt:	P16150
Pathways:	Regulation of Leukocyte Mediated Immunity

Application Details

Application Notes:	WB,1:500 - 1:2000,IHC,1:50 - 1:200,IF,1:50 - 1:200
Comment:	HIGH QUALITY
Restrictions:	For Research Use only

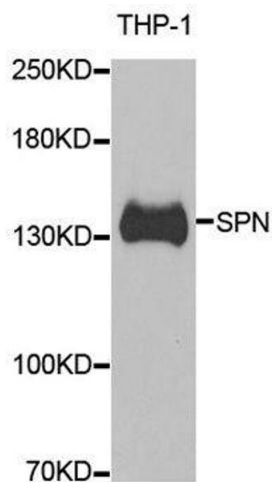
Handling

Format:	Liquid
Buffer:	PBS with 0.02 % sodium azide,50 % glycerol, pH 7.3.
Preservative:	Sodium azide
Precaution of Use:	This product contains Sodium azide: a POISONOUS AND HAZARDOUS SUBSTANCE which should be handled by trained staff only.
Storage:	-20 °C
Storage Comment:	Store at -20°C. Avoid freeze / thaw cycles.



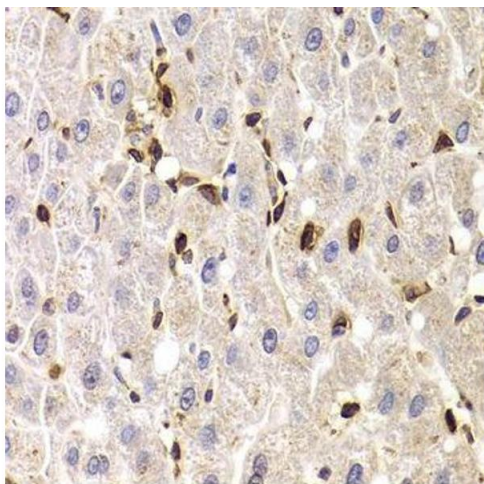
Immunohistochemistry (Paraffin-embedded Sections)

Image 1. Immunohistochemistry of paraffin-embedded human breast cancer using SPN antibody.



Western Blotting

Image 2. Western blot analysis of extracts of THP-1 cells, using SPN antibody.



Immunohistochemistry (Paraffin-embedded Sections)

Image 3. Immunohistochemistry of paraffin-embedded human liver injury using SPN antibody.

Please check the [product details page](#) for more images. Overall 8 images are available for ABIN6148363.