

Datasheet for ABIN6148382
anti-SPR antibody (AA 1-261)



[Go to Product page](#)

1 Image

Overview

Quantity:	100 µL
Target:	SPR
Binding Specificity:	AA 1-261
Reactivity:	Human
Host:	Rabbit
Clonality:	Polyclonal
Conjugate:	This SPR antibody is un-conjugated
Application:	Western Blotting (WB)

Product Details

Immunogen:	Recombinant fusion protein containing a sequence corresponding to amino acids 1-261 of human SPR (NP_003115.1).
Sequence:	MEGGLGRAVC LLTGASRGFG RTLAPLLASL LSPGSVLVLS ARNDEALRQL EAELGAERSG LRVVRVPADL GAEAGLQQLL GALRELPRPK GLQRLLINN AGSLGDVSKG FVDLSDSTQV NNYWALNLTSLCLTSSVLK AFPDSPGLNR TVVNISSLCA LQPFKGWALY CAGKAARDML FQVLALEEPN VRVLNYAPGP LDTDMQQLAR ETSVDPDMRK GLQELKAKGK LVDCKVSAQK LLSLLEKDEF KSGAHVDFYD K
Isotype:	IgG
Cross-Reactivity:	Human, Mouse, Rat
Characteristics:	Polyclonal Antibodies

Target Details

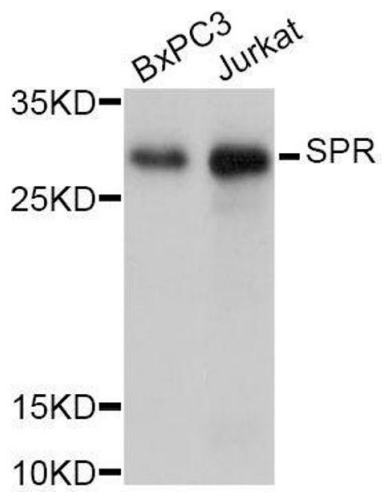
Target:	SPR
Alternative Name:	SPR (SPR Products)
Background:	<p>This gene encodes an aldo-keto reductase that catalyzes the NADPH-dependent reduction of pteridine derivatives and is important in the biosynthesis of tetrahydrobiopterin (BH4). Mutations in this gene result in DOPA-responsive dystonia due to sepiaterin reductase deficiency. A pseudogene has been identified on chromosome 1.,SPR,SDR38C1,Cancer,Signal Transduction,Endocrine & Metabolism,Amino acid metabolism,Neuroscience,Neurodegenerative Diseases,Dopamine Signaling in Parkinson's Disease,SPR</p>
Molecular Weight:	28 kDa
Gene ID:	6697
UniProt:	P35270
Pathways:	Regulation of Systemic Arterial Blood Pressure by Hormones , Feeding Behaviour , Smooth Muscle Cell Migration

Application Details

Application Notes:	WB,1:500 - 1:2000
Comment:	HIGH QUALITY
Restrictions:	For Research Use only

Handling

Format:	Liquid
Buffer:	PBS with 0.02 % sodium azide,50 % glycerol, pH 7.3.
Preservative:	Sodium azide
Precaution of Use:	This product contains Sodium azide: a POISONOUS AND HAZARDOUS SUBSTANCE which should be handled by trained staff only.
Storage:	-20 °C
Storage Comment:	Store at -20°C. Avoid freeze / thaw cycles.



Western Blotting

Image 1. Western blot analysis of extracts of various cell lines, using SPR Antibody.