

Datasheet for ABIN6148398
anti-SPSB1 antibody (AA 1-60)



[Go to Product page](#)

1 Image

Overview

Quantity:	100 µL
Target:	SPSB1
Binding Specificity:	AA 1-60
Reactivity:	Human
Host:	Rabbit
Clonality:	Polyclonal
Conjugate:	This SPSB1 antibody is un-conjugated
Application:	Western Blotting (WB)

Product Details

Immunogen:	Recombinant fusion protein containing a sequence corresponding to amino acids 1-60 of human SPSB1 (NP_079382.2).
Sequence:	MGQKVTGGIK TVDMRDPTYR PLKQELQGLD YCKPTRLDLL LDMPPVSYDV QLLHSWNNND
Isotype:	IgG
Cross-Reactivity:	Human, Mouse, Rat
Characteristics:	Polyclonal Antibodies

Target Details

Target:	SPSB1
Alternative Name:	SPSB1 (SPSB1 Products)

Target Details

Background: Substrate recognition component of a SCF-like ECS (Elongin BC-CUL2/5-SOCS-box protein E3 ubiquitin-protein ligase complex which mediates the ubiquitination and subsequent proteasomal degradation of target proteins. Negatively regulates nitric oxide (NO) production and limits cellular toxicity in activated macrophages by mediating the ubiquitination and proteasomal degradation of NOS2. Acts as a bridge which links NOS2 with the ECS E3 ubiquitin ligase complex components ELOC and CUL5.,SPSB1,SSB-1,SSB1,SPSB1

Molecular Weight: 30 kDa

Gene ID: 80176

UniProt: [Q96BD6](#)

Application Details

Application Notes: WB,1:500 - 1:2000

Restrictions: For Research Use only

Handling

Format: Liquid

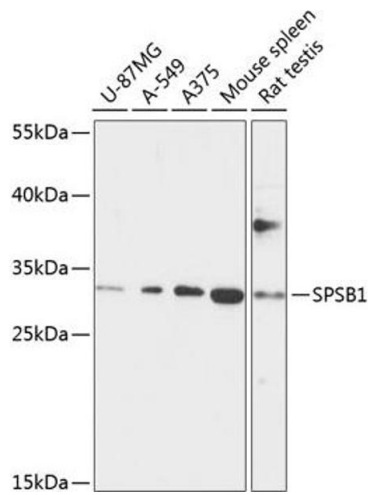
Buffer: PBS with 0.02 % sodium azide,50 % glycerol, pH 7.3.

Preservative: Sodium azide

Precaution of Use: This product contains Sodium azide: a POISONOUS AND HAZARDOUS SUBSTANCE which should be handled by trained staff only.

Storage: -20 °C

Storage Comment: Store at -20°C. Avoid freeze / thaw cycles.



Western Blotting

Image 1. Western blot analysis of extracts of various cell lines, using SPSB1 antibody (ABIN6133095, ABIN6148398, ABIN6148400 and ABIN6218046) at 1:1000 dilution. Secondary antibody: HRP Goat Anti-Rabbit IgG (H+L) (ABIN1684268 and ABIN3020597) at 1:10000 dilution. Lysates/proteins: 25 µg per lane. Blocking buffer: 3 % nonfat dry milk in TBST. Detection: ECL Basic Kit (RM00020). Exposure time: 30s.