

Datasheet for ABIN6148444
anti-SRI antibody (AA 1-198)



[Go to Product page](#)

4 Images

Overview

Quantity:	100 µL
Target:	SRI
Binding Specificity:	AA 1-198
Reactivity:	Human
Host:	Rabbit
Clonality:	Polyclonal
Conjugate:	This SRI antibody is un-conjugated
Application:	Western Blotting (WB), Immunohistochemistry (IHC), Immunofluorescence (IF)

Product Details

Immunogen:	Recombinant fusion protein containing a sequence corresponding to amino acids 1-198 of human SRI (NP_003121.1).
Sequence:	MAYPGHPGAG GGYYPGGYGG APGGPAFPGQ TQDPLYGYFA AVAGQDGQID ADELQRCLTQ SGIAGGYKPF NLETCLMVS MLDRDMSGTM GFNEFKELWA VLNGWRQHFI SFDTDRSGTV DPQELQKALT TMGFRLSPQA VNSIAKRYST NGKITFDDYI ACCVKLRALT DSFRRRDTAQ QGVVNFYDD FIQCVMSV
Isotype:	IgG
Cross-Reactivity:	Human, Mouse, Rat
Characteristics:	Polyclonal Antibodies

Target Details

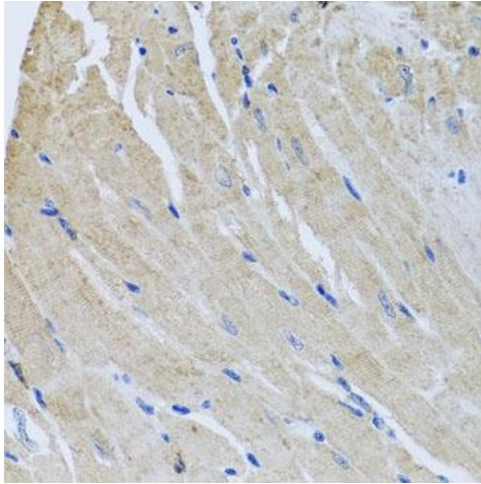
Target:	SRI
Alternative Name:	SRI (SRI Products)
Background:	<p>This gene encodes a calcium-binding protein with multiple E-F hand domains that relocates from the cytoplasm to the sarcoplasmic reticulum in response to elevated calcium levels. In addition to regulating intracellular calcium homeostasis it also modulates excitation-contraction coupling in the heart. Alternative splicing results in multiple transcript variants encoding distinct proteins. Multiple pseudogenes exist for this gene.,SRI,CP-22,CP22,SCN,V19,sorcin,Signal Transduction,Cell Biology & Developmental Biology,Cell Adhesion,Tight Junctions,Cytoskeleton,Actins,Neuroscience,Calcium Signaling,Cardiovascular,Heart,Contractility,SRI</p>
Molecular Weight:	20 kDa/21 kDa
Gene ID:	6717
UniProt:	P30626
Pathways:	Transition Metal Ion Homeostasis , Maintenance of Protein Location , Negative Regulation of Transporter Activity

Application Details

Application Notes:	WB,1:500 - 1:2000,IHC,1:50 - 1:100,IF,1:50 - 1:100
Comment:	HIGH QUALITY
Restrictions:	For Research Use only

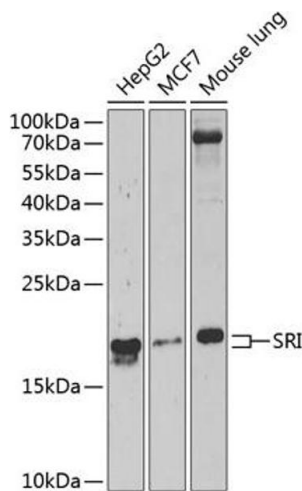
Handling

Format:	Liquid
Buffer:	PBS with 0.02 % sodium azide,50 % glycerol, pH 7.3.
Preservative:	Sodium azide
Precaution of Use:	This product contains Sodium azide: a POISONOUS AND HAZARDOUS SUBSTANCE which should be handled by trained staff only.
Storage:	-20 °C
Storage Comment:	Store at -20°C. Avoid freeze / thaw cycles.



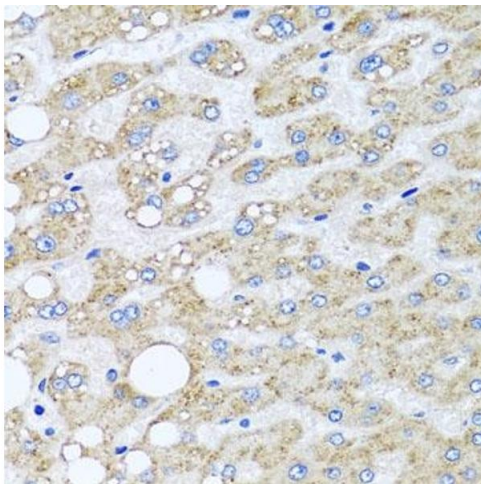
Immunohistochemistry

Image 1. Immunohistochemistry of paraffin-embedded mouse heart using SRI antibody at dilution of 1:100 (40x lens). Perform microwave antigen retrieval with 10 mM PBS buffer pH 7.2 before commencing with IHC staining protocol.



Western Blotting

Image 2. Western blot analysis of extracts of various cell lines, using SRI Antibody at 1:1000 dilution. Secondary antibody: HRP Goat Anti-Rabbit IgG (H+L) (ABIN1684268 and ABIN3020597) at 1:10000 dilution. Lysates/proteins: 25 µg per lane. Blocking buffer: 3% nonfat dry milk in TBST. Detection: ECL Basic Kit (RM00020). Exposure time: 90s.



Immunohistochemistry

Image 3. Immunohistochemistry of paraffin-embedded human liver tissue using SRI antibody at dilution of 1:100 (40x lens). Perform microwave antigen retrieval with 10 mM PBS buffer pH 7.2 before commencing with IHC staining protocol.

Please check the [product details page](#) for more images. Overall 4 images are available for ABIN6148444.