

Datasheet for ABIN6148465
anti-SRSF3 antibody (AA 1-90)[Go to Product page](#)

7 Images

Overview

Quantity:	100 µL
Target:	SRSF3
Binding Specificity:	AA 1-90
Reactivity:	Human
Host:	Rabbit
Clonality:	Polyclonal
Conjugate:	This SRSF3 antibody is un-conjugated
Application:	Western Blotting (WB), Immunofluorescence (IF), Immunohistochemistry (IHC)

Product Details

Immunogen:	Recombinant fusion protein containing a sequence corresponding to amino acids 1-90 of human SRSF3 (NP_003008.1).
Sequence:	MHRDSCPLDC KVVVGNLGNN GNKTELERAFF GYYGPLRSVW VARNPPGFAF VEFEDPRDAA DAVRELDGRT LCGCRVRVEL SNGEKRSRNR
Isotype:	IgG
Cross-Reactivity:	Human, Mouse, Rat
Characteristics:	Polyclonal Antibodies

Target Details

Target:	SRSF3
---------	-------

Target Details

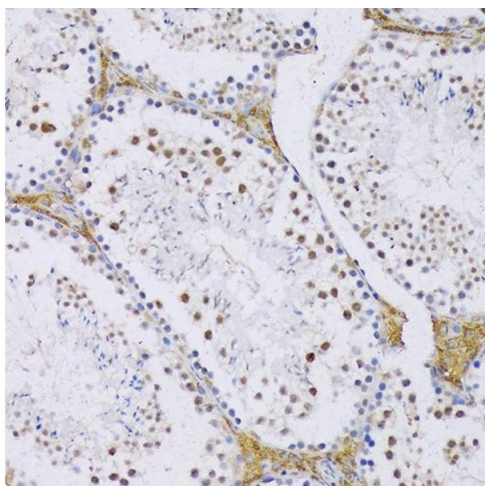
Alternative Name:	SRSF3 (SRSF3 Products)
Background:	The protein encoded by this gene is a member of the serine/arginine (SR)-rich family of pre-mRNA splicing factors, which constitute part of the spliceosome. Each of these factors contains an RNA recognition motif (RRM) for binding RNA and an RS domain for binding other proteins. The RS domain is rich in serine and arginine residues and facilitates interaction between different SR splicing factors. In addition to being critical for mRNA splicing, the SR proteins have also been shown to be involved in mRNA export from the nucleus and in translation. Two transcript variants, one protein-coding and the other non-coding, have been found for this gene.,SRSF3,SFRS3,SRp20,Epigenetics & Nuclear Signaling,RNA Binding,SRSF3
Molecular Weight:	14 kDa/19 kDa
Gene ID:	6428
UniProt:	P84103

Application Details

Application Notes:	WB,1:500 - 1:2000,IHC,1:100 - 1:200,IF,1:50 - 1:200
Comment:	HIGH QUALITY
Restrictions:	For Research Use only

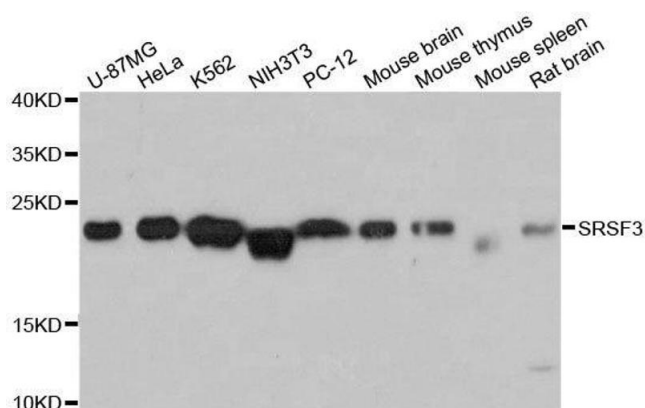
Handling

Format:	Liquid
Buffer:	PBS with 0.02 % sodium azide,50 % glycerol, pH 7.3.
Preservative:	Sodium azide
Precaution of Use:	This product contains Sodium azide: a POISONOUS AND HAZARDOUS SUBSTANCE which should be handled by trained staff only.
Storage:	-20 °C
Storage Comment:	Store at -20°C. Avoid freeze / thaw cycles.



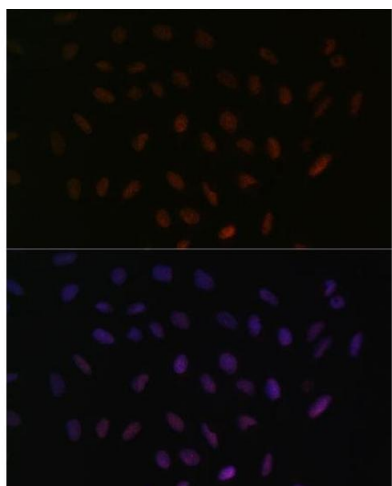
Immunohistochemistry

Image 1. Immunohistochemistry of paraffin-embedded Mouse testis using SRSF3 antibody (ABIN6132649, ABIN6148465, ABIN6148466 and ABIN6221693) at dilution of 1:100 (20x lens). Perform microwave antigen retrieval with 10 mM PBS buffer pH 7.2 before commencing with IHC staining protocol.



Western Blotting

Image 2. Western blot analysis of extracts of various cell lines, using SRSF3 antibody.



Immunofluorescence

Image 3. Immunofluorescence analysis of U-2 OS cells using SRSF3 antibody (ABIN6132649, ABIN6148465, ABIN6148466 and ABIN6221693) at dilution of 1:100. Blue: DAPI for nuclear staining.

Please check the [product details page](#) for more images. Overall 7 images are available for ABIN6148465.