

Datasheet for ABIN6148483
anti-SSNA1 antibody (AA 1-119)



[Go to Product page](#)

4 Images

Overview

| | |
|----------------------|---|
| Quantity: | 100 µL |
| Target: | SSNA1 |
| Binding Specificity: | AA 1-119 |
| Reactivity: | Human |
| Host: | Rabbit |
| Clonality: | Polyclonal |
| Conjugate: | This SSNA1 antibody is un-conjugated |
| Application: | Western Blotting (WB), Immunohistochemistry (IHC) |

Product Details

| | |
|-------------------|--|
| Immunogen: | Recombinant fusion protein containing a sequence corresponding to amino acids 1-119 of human SSNA1 (NP_003722.2). |
| Sequence: | MTQQGAALQN YNNELVKCIE ELCQKREELC RQIQEEEDK QRLQNEVRQL TEKLARVNEN LARKIASRNE FDR TIAETEA AYLKILESSQ TLLSVLKREA GNLT KATAPD QKSSGGRDS |
| Isotype: | IgG |
| Cross-Reactivity: | Human, Mouse, Rat |
| Characteristics: | Polyclonal Antibodies |

Target Details

| | |
|---------|-------|
| Target: | SSNA1 |
|---------|-------|

Target Details

| | |
|-------------------|---|
| Alternative Name: | SSNA1 (SSNA1 Products) |
| Background: | SSNA1,N14,NA-14,NA14,Cell Biology & Developmental Biology,Cell Cycle,Centrosome,Immunology & Inflammation,SSNA1 |
| Molecular Weight: | 13 kDa |
| Gene ID: | 8636 |
| UniProt: | O43805 |

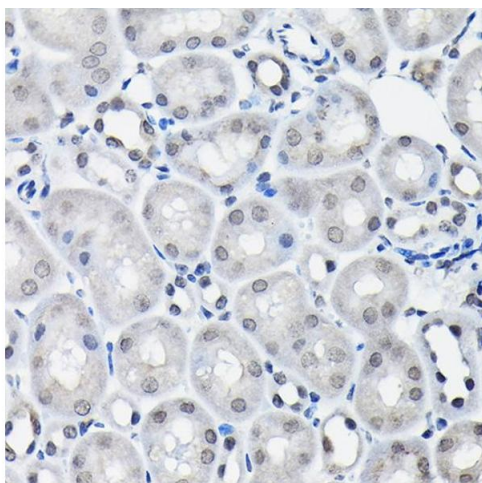
Application Details

| | |
|--------------------|------------------------------------|
| Application Notes: | WB,1:500 - 1:2000,IHC,1:50 - 1:200 |
| Restrictions: | For Research Use only |

Handling

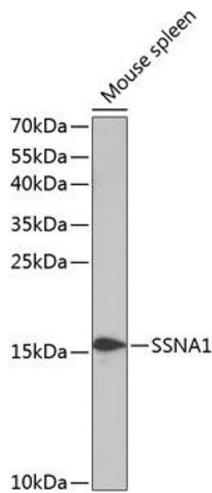
| | |
|--------------------|--|
| Format: | Liquid |
| Buffer: | PBS with 0.02 % sodium azide,50 % glycerol, pH 7.3. |
| Preservative: | Sodium azide |
| Precaution of Use: | This product contains Sodium azide: a POISONOUS AND HAZARDOUS SUBSTANCE which should be handled by trained staff only. |
| Storage: | -20 °C |
| Storage Comment: | Store at -20°C. Avoid freeze / thaw cycles. |

Images



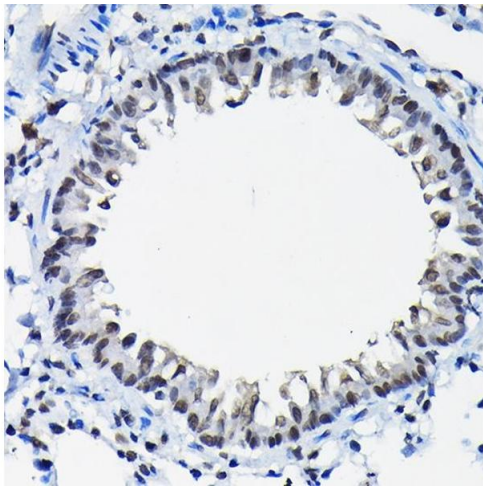
Immunohistochemistry

Image 1. Immunohistochemistry of paraffin-embedded mouse kidney using SSN Rabbit pAb (3377) at dilution of 1:100 (40x lens). Perform high pressure antigen retrieval with 10 mM citrate buffer pH 6.0 before commencing with IHC staining protocol.



Western Blotting

Image 2. Western blot analysis of extracts of mouse spleen, using SSN antibody (3377) at 1:1000 dilution. Secondary antibody: HRP Goat Anti-Rabbit IgG (H+L) (ABIN1684268 and ABIN3020597) at 1:10000 dilution. Lysates/proteins: 25 µg per lane. Blocking buffer: 3% nonfat dry milk in TBST. Detection: ECL Enhanced Kit (RM00021). Exposure time: 90s.



Immunohistochemistry

Image 3. Immunohistochemistry of paraffin-embedded rat lung using SSN Rabbit pAb (3377) at dilution of 1:100 (40x lens). Perform high pressure antigen retrieval with 10 mM citrate buffer pH 6.0 before commencing with IHC staining protocol.

Please check the [product details page](#) for more images. Overall 4 images are available for ABIN6148483.