

Datasheet for ABIN6148563  
**anti-STAT1 antibody (AA 650-750)**

## 5 Images

[Go to Product page](#)

## Overview

Quantity:	100 µL
Target:	STAT1
Binding Specificity:	AA 650-750
Reactivity:	Human
Host:	Rabbit
Clonality:	Polyclonal
Conjugate:	This STAT1 antibody is un-conjugated
Application:	Western Blotting (WB), Immunohistochemistry (IHC), Immunoprecipitation (IP), Immunofluorescence (IF)

## Product Details

Immunogen:	A synthetic peptide corresponding to a sequence within amino acids 650-750 of human STAT1 (NP_009330.1).
Sequence:	NYKVMAAENI PENPLKYLYP NIDKDHAFGK YYSRPKEAPE PMELDGPKGT GYIKTELISV SEVHPSRLQT TDNLLPMSPE EFDEVSRIVG SVEFDMMNT V
Isotype:	IgG
Cross-Reactivity:	Human, Mouse, Rat
Characteristics:	Polyclonal Antibodies

## Target Details

Target:	STAT1
---------	-------

## Target Details

Alternative Name:	STAT1 ( <a href="#">STAT1 Products</a> )
Background:	<p>The protein encoded by this gene is a member of the STAT protein family. In response to cytokines and growth factors, STAT family members are phosphorylated by the receptor associated kinases, and then form homo- or heterodimers that translocate to the cell nucleus where they act as transcription activators. This protein can be activated by various ligands including interferon-alpha, interferon-gamma, EGF, PDGF and IL6. This protein mediates the expression of a variety of genes, which is thought to be important for cell viability in response to different cell stimuli and pathogens. Two alternatively spliced transcript variants encoding distinct isoforms have been described.,CANDF7,IMD31A,IMD31B,IMD31C,ISGF-3,STAT91,STAT1 alpha,STAT1,Epigenetics &amp; Nuclear Signaling,Transcription Factors,Cancer,Signal Transduction,ErbB-HER Signaling Pathway,MAPK-Erk Signaling Pathway,MAPK-P38 Signaling Pathway,Cell Biology &amp; Developmental Biology,Apoptosis,Inhibition of Apoptosis,Immunology &amp; Inflammation,IL-6 Receptor Signaling Pathway,STAT1</p>
Molecular Weight:	83 kDa/87 kDa
Gene ID:	6772
UniProt:	<a href="#">P42224</a>
Pathways:	<a href="#">JAK-STAT Signaling</a> , <a href="#">RTK Signaling</a> , <a href="#">Interferon-gamma Pathway</a> , <a href="#">Response to Growth Hormone Stimulus</a> , <a href="#">Cellular Response to Molecule of Bacterial Origin</a> , <a href="#">Positive Regulation of Endopeptidase Activity</a> , <a href="#">Hepatitis C</a> , <a href="#">CXCR4-mediated Signaling Events</a>

## Application Details

Application Notes:	WB,1:500 - 1:2000,IHC,1:50 - 1:200,IF,1:50 - 1:200,IP,1:20 - 1:50
Comment:	HIGH QUALITY
Restrictions:	For Research Use only

## Handling

Format:	Liquid
Buffer:	PBS with 0.02 % sodium azide,50 % glycerol, pH 7.3.
Preservative:	Sodium azide
Precaution of Use:	This product contains Sodium azide: a POISONOUS AND HAZARDOUS SUBSTANCE which

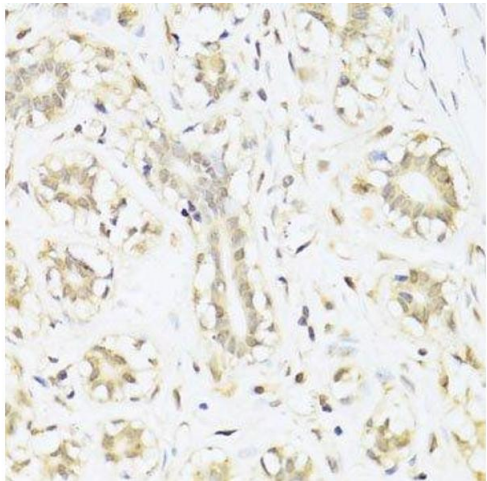
Handling

should be handled by trained staff only.

Storage: -20 °C

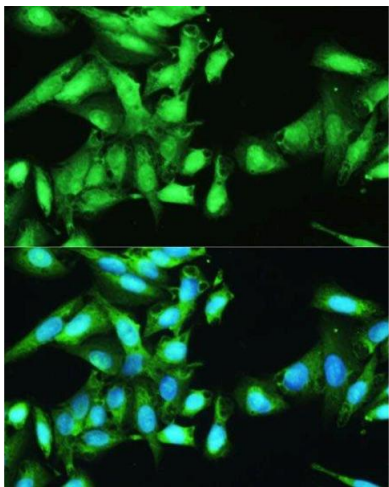
Storage Comment: Store at -20°C. Avoid freeze / thaw cycles.

Images



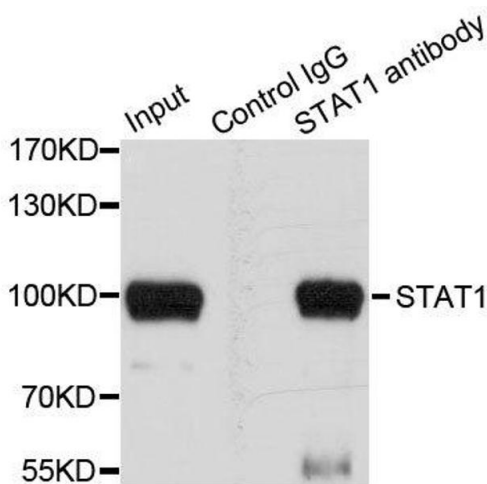
Immunohistochemistry (Paraffin-embedded Sections)

**Image 1.** Immunohistochemistry of paraffin-embedded human mammary cancer using STAT1 antibody.



Immunofluorescence

**Image 2.** Immunofluorescence analysis of U2OS cells using STAT1 antibody.



Immunoprecipitation

**Image 3.** Immunoprecipitation analysis of 100ug extracts of HeLa cells using 3ug STAT1 antibody.

## Images

---

Please check the [product details page](#) for more images. Overall 5 images are available for ABIN6148563.