



[Go to Product page](#)

Datasheet for ABIN6148629

anti-STOML2 antibody (AA 29-356)

2 Images

Overview

Quantity:	100 µL
Target:	STOML2
Binding Specificity:	AA 29-356
Reactivity:	Human
Host:	Rabbit
Clonality:	Polyclonal
Conjugate:	This STOML2 antibody is un-conjugated
Application:	Western Blotting (WB), Immunohistochemistry (IHC)

Product Details

Immunogen:	Recombinant fusion protein containing a sequence corresponding to amino acids 29-356 of human STOML2 (NP_038470.1).
Sequence:	SSGLPRNTVV LFVPQQEAWV VERMGRFHRI LEPGLNILIP VLDRIRYVQS LKEIVINVPE QSAVTLDNVT LQIDGVLYLR IMDPYKASYG VEDPEYAVTQ LAQTTMRSEL GKLSLDKVFR ERESLNASIV DAINQAADCW GIRCLRYEIK DIHVPPRVKE SMQMQVEAER RKRATVLESE GTRESAINVA EGKKQAQILA SEAEKAEQIN QAAGEASAVL AKAKAKAEAI RILAAALTQH NGDAAASLTV AEQYVSAFSK LAKDSNTILL PSNPGDVTSM VAQAMGVYGA LTKAPVPGTP DSLSSGSSRD VQGTDSLDE ELDRVKMS
Isotype:	IgG
Cross-Reactivity:	Human, Mouse, Rat
Characteristics:	Polyclonal Antibodies

Target Details

Target:	STOML2
Alternative Name:	STOML2 (STOML2 Products)
Background:	<p>Mitochondrial protein that probably regulates the biogenesis and the activity of mitochondria. Stimulates cardiolipin biosynthesis, binds cardiolipin-enriched membranes where it recruits and stabilizes some proteins including prohibitin and may therefore act in the organization of functional microdomains in mitochondrial membranes. Through regulation of the mitochondrial function may play a role into several biological processes including cell migration, cell proliferation, T-cell activation, calcium homeostasis and cellular response to stress. May play a role in calcium homeostasis through negative regulation of calcium efflux from mitochondria. Required for mitochondrial hyperfusion a pro-survival cellular response to stress which results in increased ATP production by mitochondria. May also regulate the organization of functional domains at the plasma membrane and play a role in T-cell activation through association with the T-cell receptor signaling complex and its regulation.,STOML2,HSPC108,SLP-2,Cancer,STOML2</p>
Molecular Weight:	33 kDa/38 kDa
Gene ID:	30968
UniProt:	Q9UJZ1
Pathways:	SARS-CoV-2 Protein Interactome , The Global Phosphorylation Landscape of SARS-CoV-2 Infection

Application Details

Application Notes:	WB,1:500 - 1:2000,IHC,1:50 - 1:200
Comment:	HIGH QUALITY
Restrictions:	For Research Use only

Handling

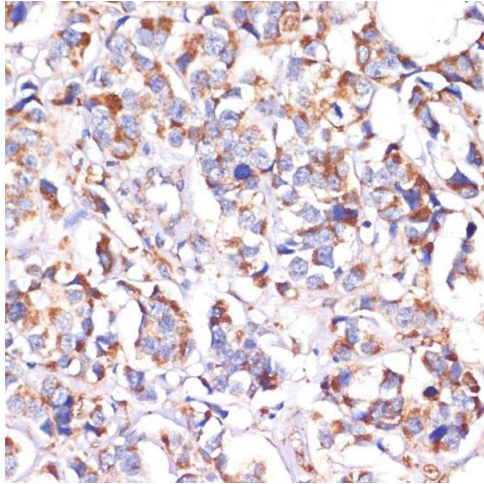
Format:	Liquid
Buffer:	PBS with 0.02 % sodium azide,50 % glycerol, pH 7.3.
Preservative:	Sodium azide
Precaution of Use:	This product contains Sodium azide: a POISONOUS AND HAZARDOUS SUBSTANCE which should be handled by trained staff only.

Handling

Storage: -20 °C

Storage Comment: Store at -20°C. Avoid freeze / thaw cycles.

Images



Immunohistochemistry

Image 1. Immunohistochemistry of paraffin-embedded human breast cancer using STOML2 antibody (ABIN6132693, ABIN6148629, ABIN6148630 and ABIN6214642) at dilution of 1:100 (40x lens). Perform microwave antigen retrieval with 10 mM PBS buffer pH 7.2 before commencing with IHC staining protocol.

Western Blotting

Image 2. Western blot analysis of extracts of various cell lines, using STOML2 antibody.

