



[Go to Product page](#)

Datasheet for ABIN6148659
anti-STX1A antibody (AA 1-288)

2 Images

Overview

Quantity:	100 µL
Target:	STX1A
Binding Specificity:	AA 1-288
Reactivity:	Human
Host:	Rabbit
Clonality:	Polyclonal
Conjugate:	This STX1A antibody is un-conjugated
Application:	Western Blotting (WB), Immunofluorescence (IF)

Product Details

Immunogen:	Recombinant fusion protein containing a sequence corresponding to amino acids 1-288 of human STX1A (NP_004594.1).
Sequence:	MKDRTQELRT AKDSDDDDDDV AVTVDRDRFM DEFFEQVEEI RGFIDKIAEN VEEVKRKHSA ILASPNPDEK TKEELEELMS DIKKTANKVR SKLKSIEQSI EQEEGLNRSS ADLRIRKTQH STLSRKFVEV MSEYNATQSD YRERCKGRIQ RQLEITGR TT TSEELEDMLE SGNPAIFASG IIMDSSISKQ ALSEIETRHS EIIKLENSIR ELHDMFMDMA MLVESQGEMI DRIEYNVEHA VDYVERAVSD TKKAVKYQSK ARKKIMIII CCVILGIVIA STVGGIFA
Isotype:	IgG
Cross-Reactivity:	Human, Rat
Characteristics:	Polyclonal Antibodies

Target Details

Target:	STX1A
Alternative Name:	STX1A (STX1A Products)
Background:	<p>This gene encodes a member of the syntaxin superfamily. Syntaxins are nervous system-specific proteins implicated in the docking of synaptic vesicles with the presynaptic plasma membrane. Syntaxins possess a single C-terminal transmembrane domain, a SNARE [Soluble NSF (N-ethylmaleimide-sensitive fusion protein)-Attachment protein REceptor] domain (known as H3), and an N-terminal regulatory domain (Habc). Syntaxins bind synaptotagmin in a calcium-dependent fashion and interact with voltage dependent calcium and potassium channels via the C-terminal H3 domain. This gene product is a key molecule in ion channel regulation and synaptic exocytosis. Alternatively spliced transcript variants encoding different isoforms have been found for this gene.,STX1A,HPC-1,P35-1,STX1,SYN1A,syntaxin-1A,Cancer,Signal Transduction,Endocrine & Metabolism,Neuroscience,Cell Type Marker,Neuron marker,Synapse marker,STX1A</p>
Molecular Weight:	28 kDa/29 kDa/33 kDa
Gene ID:	6804
UniProt:	Q16623
Pathways:	Peptide Hormone Metabolism , Synaptic Membrane , Synaptic Vesicle Exocytosis , Dicarboxylic Acid Transport

Application Details

Application Notes:	WB,1:500 - 1:2000,IF,1:50 - 1:100
Comment:	HIGH QUALITY
Restrictions:	For Research Use only

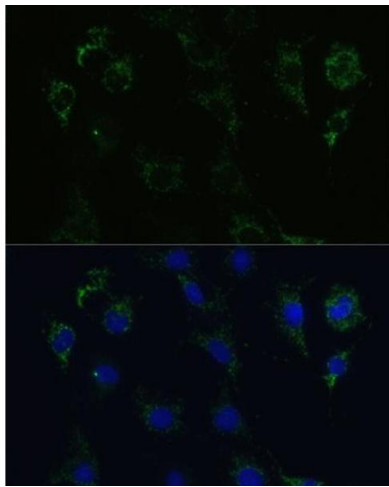
Handling

Format:	Liquid
Buffer:	PBS with 0.02 % sodium azide,50 % glycerol, pH 7.3.
Preservative:	Sodium azide
Precaution of Use:	This product contains Sodium azide: a POISONOUS AND HAZARDOUS SUBSTANCE which should be handled by trained staff only.
Storage:	-20 °C

Handling

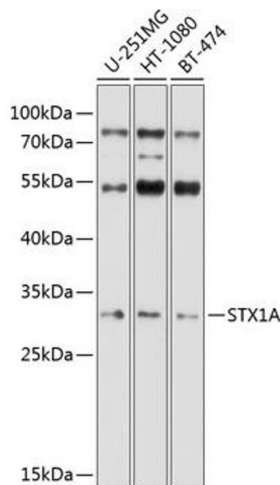
Storage Comment: Store at -20°C. Avoid freeze / thaw cycles.

Images



Immunofluorescence

Image 1. Immunofluorescence analysis of C6 cells using STX1A Polyclonal Antibody (ABIN6132695, ABIN6148659, ABIN6148661 and ABIN6221218) at dilution of 1:100 (40x lens). Blue: DAPI for nuclear staining.



Western Blotting

Image 2. Western blot analysis of extracts of various cell lines, using STX1A antibody (ABIN6132695, ABIN6148659, ABIN6148661 and ABIN6221218) at 1:1000 dilution. Secondary antibody: HRP Goat Anti-Rabbit IgG (H+L) (ABIN1684268 and ABIN3020597) at 1:10000 dilution. Lysates/proteins: 25 µg per lane. Blocking buffer: 3 % nonfat dry milk in TBST. Detection: ECL Basic Kit (RM00020). Exposure time: 60s.