

Datasheet for ABIN6148671  
**anti-STX8 antibody (AA 1-215)**



[Go to Product page](#)

1 Image

Overview

Quantity:	100 µL
Target:	STX8
Binding Specificity:	AA 1-215
Reactivity:	Human
Host:	Rabbit
Clonality:	Polyclonal
Conjugate:	This STX8 antibody is un-conjugated
Application:	Western Blotting (WB)

Product Details

Immunogen:	Recombinant fusion protein containing a sequence corresponding to amino acids 1-215 of human STX8 (NP_004844.1).
Sequence:	MAPDPWFSTY DSTCQIAQEI AEKIQQRNQY ERKGEKAPKL TVTIRALLQN LKEKIALKLD LLLRAVSTHQ ITQLEGDRRQ NLLDDLVTRE RLLLASFKNE GAEPDLIRSS LMSEEAKRGA PNPWLFEPE ETRGLGFDEI RQQQKIIQE QDAGLDALSS IISRQKQMGQ EIGNELDEQN EIIDDLANLV ENTDEKLRNE TRRVNMVDRK SASCG
Isotype:	IgG
Cross-Reactivity:	Human, Mouse
Characteristics:	Polyclonal Antibodies

## Target Details

---

Target:	STX8
Alternative Name:	STX8 ( <a href="#">STX8 Products</a> )
Background:	The gene is a member of the syntaxin family. The encoded protein is involved in protein trafficking from early to late endosomes via vesicle fusion and exocytosis. A related pseudogene has been identified on chromosome 12. Alternative splicing results in multiple transcript variants.,STX8,CARB,Signal Transduction,STX8
Molecular Weight:	26 kDa
Gene ID:	9482
UniProt:	<a href="#">Q9UNK0</a>
Pathways:	<a href="#">Synaptic Vesicle Exocytosis</a>

## Application Details

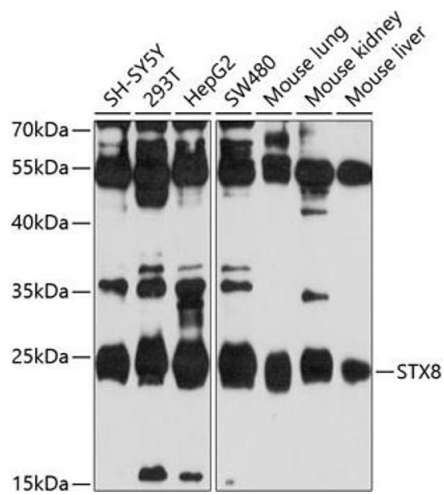
---

Application Notes:	WB,1:500 - 1:2000
Comment:	HIGH QUALITY
Restrictions:	For Research Use only

## Handling

---

Format:	Liquid
Buffer:	PBS with 0.02 % sodium azide,50 % glycerol, pH 7.3.
Preservative:	Sodium azide
Precaution of Use:	This product contains Sodium azide: a POISONOUS AND HAZARDOUS SUBSTANCE which should be handled by trained staff only.
Storage:	-20 °C
Storage Comment:	Store at -20°C. Avoid freeze / thaw cycles.



### Western Blotting

**Image 1.** Western blot analysis of extracts of various cell lines, using STX8 antibody (ABIN6129138, ABIN6148671, ABIN6148672 and ABIN6214164) at 1:1000 dilution. Secondary antibody: HRP Goat Anti-Rabbit IgG (H+L) (ABIN1684268 and ABIN3020597) at 1:10000 dilution. Lysates/proteins: 25 µg per lane. Blocking buffer: 3 % nonfat dry milk in TBST. Detection: ECL Basic Kit (RM00020). Exposure time: 90s.