

Datasheet for ABIN6148681
anti-STXBP4 antibody (AA 344-553)



[Go to Product page](#)

2 Images

Overview

Quantity:	100 µL
Target:	STXBP4
Binding Specificity:	AA 344-553
Reactivity:	Human
Host:	Rabbit
Clonality:	Polyclonal
Conjugate:	This STXBP4 antibody is un-conjugated
Application:	Immunohistochemistry (IHC), Western Blotting (WB)

Product Details

Immunogen:	Recombinant fusion protein containing a sequence corresponding to amino acids 344-553 of human STXBP4 (NP_848604.3).
Sequence:	EETRALRSRI HLAEEAAQRQA HGMEMDYEEV IRLLEAKITE LKAQLADYSD QNKESVQDLK KRIMVLDCQL RKSEMARKTF EASTEKLLHF VEAIQEVFSD NSTPLSNLSE RRAVLASQTS LTPLGRNGRS IPATLALESK ELVKSVRALL DMDCLPYGWE EAYTADGIKY FINHVTQTTS WIHPVMSVLN LSRSEENEED CSRELPNQKS
Isotype:	IgG
Cross-Reactivity:	Human, Mouse
Characteristics:	Polyclonal Antibodies

Target Details

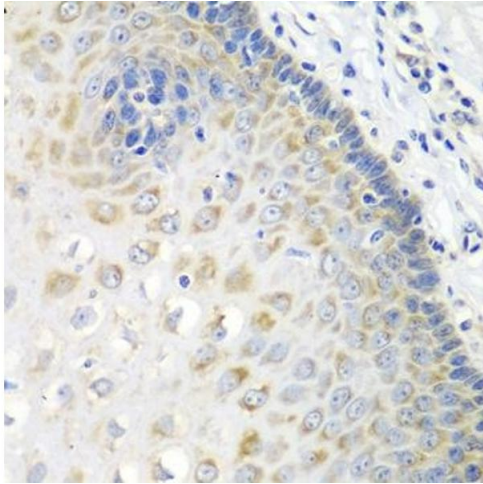
Target:	STXBP4
Alternative Name:	STXBP4 (STXBP4 Products)
Background:	Plays a role in the translocation of transport vesicles from the cytoplasm to the plasma membrane. Inhibits the translocation of SLC2A4 from intracellular vesicles to the plasma membrane by STX4A binding and preventing the interaction between STX4A and VAMP2. Stimulation with insulin disrupts the interaction with STX4A, leading to increased levels of SLC2A4 at the plasma membrane. May also play a role in the regulation of insulin release by pancreatic beta cells after stimulation by glucose (By similarity.,STXBP4,Synip,Signal Transduction,Endocrine & Metabolism,Insulin Receptor Signaling Pathway,STXBP4
Molecular Weight:	26 kDa/61 kDa
Gene ID:	252983
UniProt:	Q6ZWJ1

Application Details

Application Notes:	WB,1:500 - 1:2000,IHC,1:50 - 1:100
Restrictions:	For Research Use only

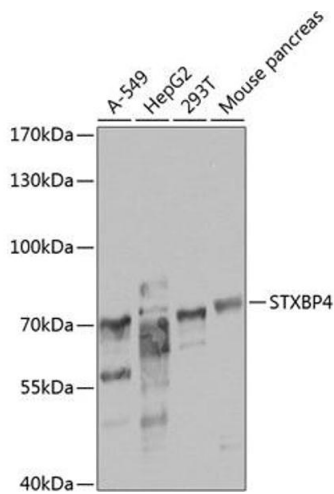
Handling

Format:	Liquid
Buffer:	PBS with 0.02 % sodium azide,50 % glycerol, pH 7.3.
Preservative:	Sodium azide
Precaution of Use:	This product contains Sodium azide: a POISONOUS AND HAZARDOUS SUBSTANCE which should be handled by trained staff only.
Storage:	-20 °C
Storage Comment:	Store at -20°C. Avoid freeze / thaw cycles.



Immunohistochemistry

Image 1. Immunohistochemistry of paraffin-embedded human esophagus using STXBP4 antibody at dilution of 1:100 (40x lens). Perform microwave antigen retrieval with 10 mM PBS buffer pH 7.2 before commencing with IHC staining protocol.



Western Blotting

Image 2. Western blot analysis of extracts of various cell lines, using STXBP4 antibody at 1:1000 dilution. Secondary antibody: HRP Goat Anti-Rabbit IgG (H+L) (ABIN1684268 and ABIN3020597) at 1:10000 dilution. Lysates/proteins: 25 µg per lane. Blocking buffer: 3% nonfat dry milk in TBST. Detection: ECL Basic Kit (RM00020). Exposure time: 20s.