

Datasheet for ABIN6148690
anti-SUCLG2 antibody (AA 50-300)



[Go to Product page](#)

5 Images

Overview

Quantity:	100 µL
Target:	SUCLG2
Binding Specificity:	AA 50-300
Reactivity:	Human
Host:	Rabbit
Clonality:	Polyclonal
Conjugate:	This SUCLG2 antibody is un-conjugated
Application:	Western Blotting (WB), Immunohistochemistry (IHC), Immunofluorescence (IF)

Product Details

Immunogen:	Recombinant fusion protein containing a sequence corresponding to amino acids 50-300 of human SUCLG2 (NP_003839.2).
Sequence:	SDNGVRVQRF FVADTANEAL EAAKRLNAKE IVLKAQILAG GRGKGVFNSG LKGGVHLTKD PNVVGQLAKQ MIGYNLATAKQ TPKEGVKVNK VMVAEALDIS RETYLAILMD RSCNGPVLVG SPQGGVDIEE VAASNPELIF KEQIDIFEGI KDSQAQRMAE NLGFVGPLKS QAADQITKLY NLFLKIDATQ VEVNPFGETP EGQVVCFDAK INFDDNAEFR QKDIFAMDDK SENEPIENEA AKYDLKYIGL D
Isotype:	IgG
Cross-Reactivity:	Human, Mouse, Rat
Characteristics:	Polyclonal Antibodies

Target Details

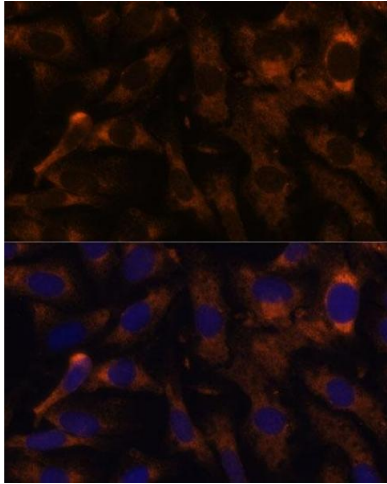
Target:	SUCLG2
Alternative Name:	SUCLG2 (SUCLG2 Products)
Background:	This gene encodes a GTP-specific beta subunit of succinyl-CoA synthetase. Succinyl-CoA synthetase catalyzes the reversible reaction involving the formation of succinyl-CoA and succinate. Alternate splicing results in multiple transcript variants. Pseudogenes of this gene are found on chromosomes 5 and 12.,SUCLG2,G-SCS,GBETA,GTPSCS,Signal Transduction,Endocrine & Metabolism,Mitochondrial metabolism,Mitochondrial markers,SUCLG2
Molecular Weight:	46 kDa/47 kDa
Gene ID:	8801
UniProt:	Q96I99

Application Details

Application Notes:	WB,1:500 - 1:2000,IHC,1:50 - 1:200,IF,1:50 - 1:100
Comment:	HIGH QUALITY
Restrictions:	For Research Use only

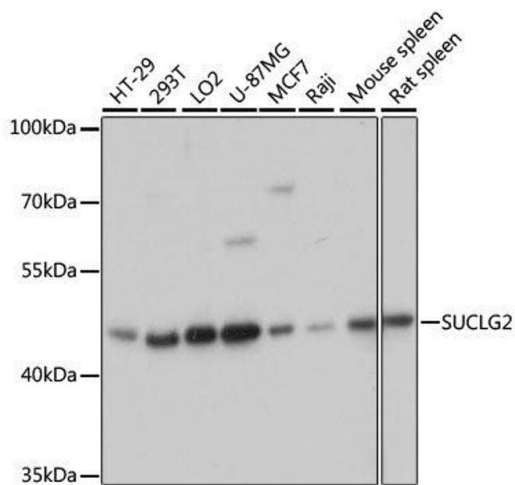
Handling

Format:	Liquid
Buffer:	PBS with 0.02 % sodium azide,50 % glycerol, pH 7.3.
Preservative:	Sodium azide
Precaution of Use:	This product contains Sodium azide: a POISONOUS AND HAZARDOUS SUBSTANCE which should be handled by trained staff only.
Storage:	-20 °C
Storage Comment:	Store at -20°C. Avoid freeze / thaw cycles.



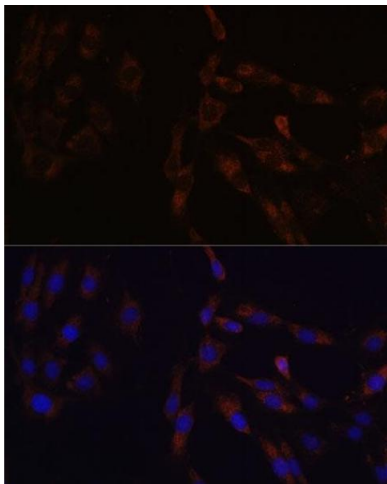
Immunofluorescence

Image 1. Immunofluorescence analysis of U-2 OS cells using SUCLG2 Polyclonal Antibody at dilution of 1:100 (40x lens). Blue: DAPI for nuclear staining.



Western Blotting

Image 2. Western blot analysis of extracts of various cell lines, using SUCLG2 antibody.



Immunofluorescence

Image 3. Immunofluorescence analysis of C6 cells using SUCLG2 Polyclonal Antibody at dilution of 1:100 (40x lens). Blue: DAPI for nuclear staining.

Please check the [product details page](#) for more images. Overall 5 images are available for ABIN6148690.