

Datasheet for ABIN6148744
anti-SURF1 antibody (AA 80-275)



[Go to Product page](#)

2 Images

Overview

Quantity:	100 µL
Target:	SURF1
Binding Specificity:	AA 80-275
Reactivity:	Human
Host:	Rabbit
Clonality:	Polyclonal
Conjugate:	This SURF1 antibody is un-conjugated
Application:	Western Blotting (WB)

Product Details

Immunogen:	Recombinant fusion protein containing a sequence corresponding to amino acids 80-275 of human SURF1 (NP_003163.1).
Sequence:	QVQRRKWKLN LIAELESRLV AEPVPLPADP MELKNLEYRP VKVRGCFDHS KELYMMPRTM VDPVREAREG GLISSSTQSG AYVVTPFHCT DLGVTILVNR GFVPRKKVNP ETRQKGQIEG EVDLIGMVRL TETRQPFVPE NNPERNHWHY RDLEAMARIT GAEPFIDAN FQSTVPGGPI GGQTRVTLRN EHLQYI
Isotype:	IgG
Cross-Reactivity:	Human, Mouse, Rat
Characteristics:	Polyclonal Antibodies

Target Details

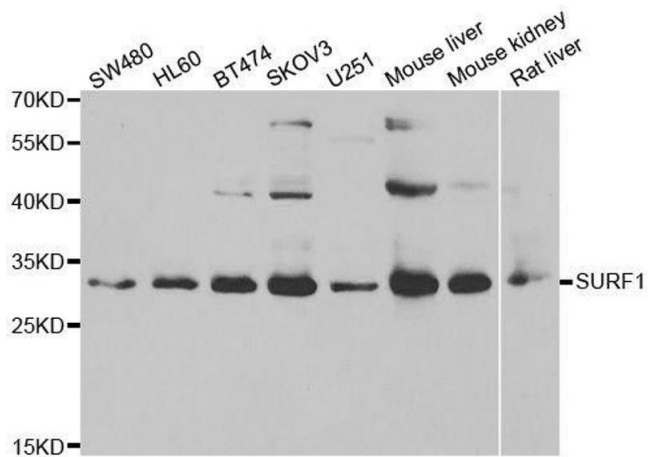
Target:	SURF1
Alternative Name:	SURF1 (SURF1 Products)
Background:	<p>This gene encodes a protein localized to the inner mitochondrial membrane and thought to be involved in the biogenesis of the cytochrome c oxidase complex. The protein is a member of the SURF1 family, which includes the related yeast protein SHY1 and rickettsial protein RP733. The gene is located in the surfeit gene cluster, a group of very tightly linked genes that do not share sequence similarity, where it shares a bidirectional promoter with SURF2 on the opposite strand. Defects in this gene are a cause of Leigh syndrome, a severe neurological disorder that is commonly associated with systemic cytochrome c oxidase deficiency.,SURF1,CMT4K,Cancer,Signal Transduction,Endocrine & Metabolism,Mitochondrial metabolism,Mitochondrial markers,Oxidative phosphorylation,SURF1</p>
Molecular Weight:	31 kDa/33 kDa
Gene ID:	6834
UniProt:	Q15526
Pathways:	Proton Transport , Ribonucleoside Biosynthetic Process

Application Details

Application Notes:	WB,1:500 - 1:2000
Comment:	HIGH QUALITY
Restrictions:	For Research Use only

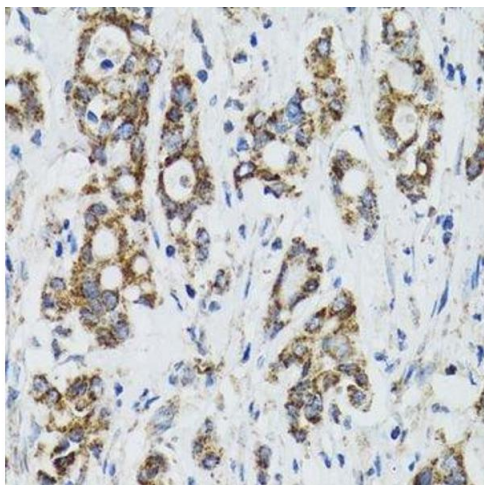
Handling

Format:	Liquid
Buffer:	PBS with 0.02 % sodium azide,50 % glycerol, pH 7.3.
Preservative:	Sodium azide
Precaution of Use:	This product contains Sodium azide: a POISONOUS AND HAZARDOUS SUBSTANCE which should be handled by trained staff only.
Storage:	-20 °C
Storage Comment:	Store at -20°C. Avoid freeze / thaw cycles.



Western Blotting

Image 1. Western blot analysis of extracts of various cell lines, using SURF1 antibody.



Immunohistochemistry (Paraffin-embedded Sections)

Image 2. Immunohistochemistry of paraffin-embedded human colon carcinoma using SURF1 antibody.