

Datasheet for ABIN6148777
anti-SYNPO2 antibody (AA 1-300)



[Go to Product page](#)

1 Image

Overview

| | |
|----------------------|---------------------------------------|
| Quantity: | 100 µL |
| Target: | SYNPO2 |
| Binding Specificity: | AA 1-300 |
| Reactivity: | Human |
| Host: | Rabbit |
| Clonality: | Polyclonal |
| Conjugate: | This SYNPO2 antibody is un-conjugated |
| Application: | Western Blotting (WB) |

Product Details

| | |
|-------------------|--|
| Immunogen: | Recombinant fusion protein containing a sequence corresponding to amino acids 1-300 of human SYNPO2 (NP_597734.2). |
| Sequence: | MGTGDFICIS MTGGAPWGFR LGGGKEQKQP LQVAKIRNQS KASGSGLCCEG DEVVSINGNP CADLTYPEVI KLMESITDSL QMLIKRPSSG ISEALISENE NKNLEHLTHG GYVESTTLQI RPATKTQCTE FFLAPVKTEV PLAENQRSGP DCAGSLKEET GPSYQRAPQM PDSQRGRVAE ELILREKVEA VQPGPVVELQ LSLSQERHKG ASGPLVALPG AEKSKSPDPD PNLSHDRIVH INSIPTNEKA DPFLRSSKII QISSGRELRV IQESEAGDAG LPRVEVILDC SDRQKTEGCR |
| Isotype: | IgG |
| Cross-Reactivity: | Mouse |
| Characteristics: | Polyclonal Antibodies |

Target Details

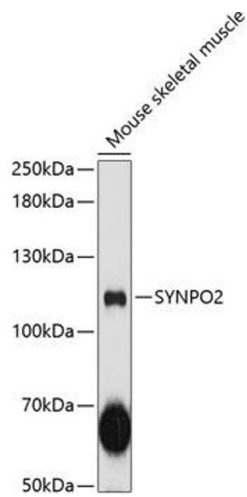
| | |
|-------------------|--|
| Target: | SYNPO2 |
| Alternative Name: | SYNPO2 (SYNPO2 Products) |
| Background: | Has an actin-binding and actin-bundling activity. Can induce the formation of F-actin networks in an isoform-specific manner. At the sarcomeric Z lines is proposed to act as adapter protein that links nascent myofibers to the sarcolemma via ZYX and may play a role in early assembly and stabilization of the Z lines. Involved in autophagosome formation. May play a role in chaperone-assisted selective autophagy (CASA involved in Z lines maintenance in striated muscle under mechanical tension, may link the client-processing CASA chaperone machinery to a membrane-tethering and fusion complex providing autophagosome membranes (By similarity. Involved in regulation of cell migration. May be a tumor suppressor.,SYNPO2,Cancer,Tumor suppressors,Signal Transduction,Cell Biology & Developmental Biology,Cytoskeleton,Microfilaments,SYNPO2 |
| Molecular Weight: | 74 kDa/117 kDa/119 kDa/133 kDa/136 kDa |
| Gene ID: | 171024 |
| UniProt: | Q9UMS6 |

Application Details

| | |
|--------------------|-----------------------|
| Application Notes: | WB,1:500 - 1:1000 |
| Restrictions: | For Research Use only |

Handling

| | |
|--------------------|--|
| Format: | Liquid |
| Buffer: | PBS with 0.02 % sodium azide,50 % glycerol, pH 7.3. |
| Preservative: | Sodium azide |
| Precaution of Use: | This product contains Sodium azide: a POISONOUS AND HAZARDOUS SUBSTANCE which should be handled by trained staff only. |
| Storage: | -20 °C |
| Storage Comment: | Store at -20°C. Avoid freeze / thaw cycles. |



Western Blotting

Image 1. Western blot analysis of extracts of mouse skeletal muscle, using SYNPO2 antibody at 1:3000 dilution. Secondary antibody: HRP Goat Anti-Rabbit IgG (H+L) (ABIN1684268 and ABIN3020597) at 1:10000 dilution. Lysates/proteins: 25 µg per lane. Blocking buffer: 3 % nonfat dry milk in TBST. Detection: ECL Enhanced Kit (RM00021). Exposure time: 90s.