

Datasheet for ABIN6148780
anti-SYNPO2L antibody (AA 700-800)



[Go to Product page](#)

1 Image

Overview

Quantity:	100 µL
Target:	SYNPO2L
Binding Specificity:	AA 700-800
Reactivity:	Human
Host:	Rabbit
Clonality:	Polyclonal
Conjugate:	This SYNPO2L antibody is un-conjugated
Application:	Western Blotting (WB)

Product Details

Immunogen:	A synthetic peptide corresponding to a sequence within amino acids 700-800 of human SYNPO2L (NP_001107605.1).
Sequence:	HVTPKTPPPM APKTPPPMTP KTPPPVAPKP PSRGLLDGLV NGAASSAGIP EPPRLQGRGG ELFAKRQSRA DRYVVEGTPG PGLGPRPRSP SPTPSLPPSW K
Isotype:	IgG
Cross-Reactivity:	Mouse
Characteristics:	Polyclonal Antibodies

Target Details

Target:	SYNPO2L
---------	---------

Target Details

Alternative Name:	SYNPO2L (SYNPO2L Products)
Background:	Actin-associated protein that may play a role in modulating actin-based shape.,SYNPO2L,Signal Transduction,Cell Biology & Developmental Biology,Cytoskeleton,Microfilaments,SYNPO2L
Molecular Weight:	79 kDa/102 kDa
Gene ID:	79933
UniProt:	Q9H987

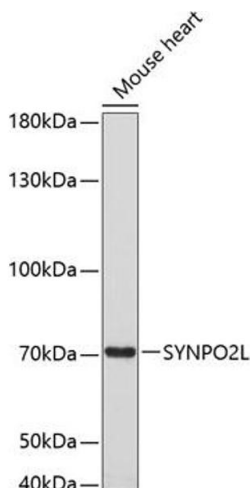
Application Details

Application Notes:	WB,1:500 - 1:2000
Restrictions:	For Research Use only

Handling

Format:	Liquid
Buffer:	PBS with 0.02 % sodium azide,50 % glycerol, pH 7.3.
Preservative:	Sodium azide
Precaution of Use:	This product contains Sodium azide: a POISONOUS AND HAZARDOUS SUBSTANCE which should be handled by trained staff only.
Storage:	-20 °C
Storage Comment:	Store at -20°C. Avoid freeze / thaw cycles.

Images



Western Blotting

Image 1. Western blot analysis of extracts of mouse heart, using SYNPO2L antibody (ABIN6135147, ABIN6148780, ABIN6148782 and ABIN6220274) at 1:3000 dilution. Secondary antibody: HRP Goat Anti-Rabbit IgG (H+L) (ABIN1684268 and ABIN3020597) at 1:10000 dilution. Lysates/proteins: 25 µg per lane. Blocking buffer: 3 % nonfat dry milk in TBST. Detection: ECL Enhanced Kit (RM00021). Exposure time: 90s.