

Datasheet for ABIN6148785
anti-SYT11 antibody (AA 37-200)



[Go to Product page](#)

4 Images

Overview

Quantity:	100 µL
Target:	SYT11
Binding Specificity:	AA 37-200
Reactivity:	Human
Host:	Rabbit
Clonality:	Polyclonal
Conjugate:	This SYT11 antibody is un-conjugated
Application:	Western Blotting (WB), Immunofluorescence (IF)

Product Details

Immunogen:	Recombinant fusion protein containing a sequence corresponding to amino acids 37-200 of human SYT11 (NP_689493.3).
Sequence:	WSCCHQQA EK KQKNPPYKFI HMLKGISIYP ETL SNKKKII KVR RDKDGPG REGGRRNLLV DAAEAGLLSR DKDPRGPSSG SCIDQLPIKM DYGEELRSP I TSLTPGESKT TSPSSPEEDV MLGSLTFSVD YNFPKKALVV TIQEAHGLPV MDDQTQGSDP YIKM
Isotype:	IgG
Cross-Reactivity:	Human, Mouse, Rat
Characteristics:	Polyclonal Antibodies

Target Details

Target:	SYT11
---------	-------

Target Details

Alternative Name: SYT11 ([SYT11 Products](#))

Background: This gene is a member of the synaptotagmin gene family and encodes a protein similar to other family members that are known calcium sensors and mediate calcium-dependent regulation of membrane trafficking in synaptic transmission. The encoded protein is also a substrate for ubiquitin-E3-ligase parkin. The gene has previously been referred to as synaptotagmin XII but has been renamed synaptotagmin XI to be consistent with mouse and rat official nomenclature.,SYT11,SYT12,sytXI,Neuroscience,SYT11

Molecular Weight: 48 kDa

Gene ID: 23208

UniProt: [Q9BT88](#)

Application Details

Application Notes: WB,1:500 - 1:2000,IF,1:50 - 1:100

Comment: HIGH QUALITY

Restrictions: For Research Use only

Handling

Format: Liquid

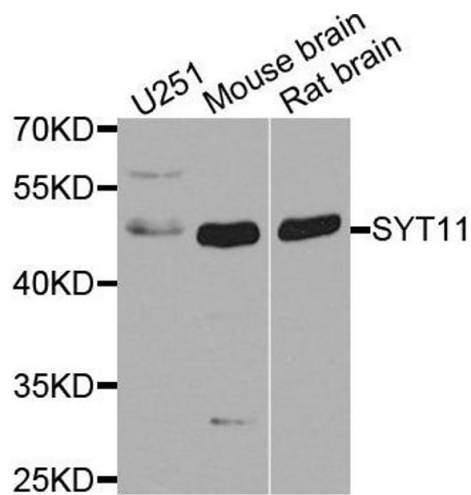
Buffer: PBS with 0.02 % sodium azide,50 % glycerol, pH 7.3.

Preservative: Sodium azide

Precaution of Use: This product contains Sodium azide: a POISONOUS AND HAZARDOUS SUBSTANCE which should be handled by trained staff only.

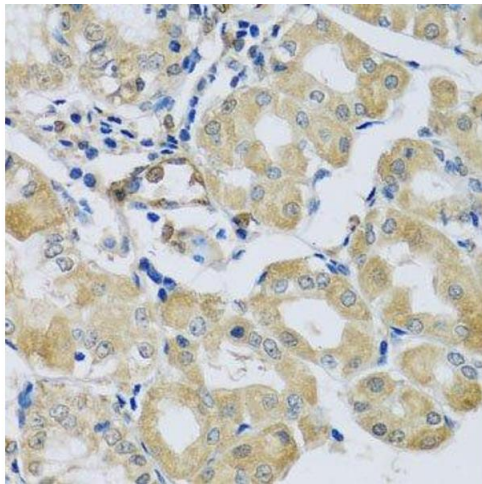
Storage: -20 °C

Storage Comment: Store at -20°C. Avoid freeze / thaw cycles.



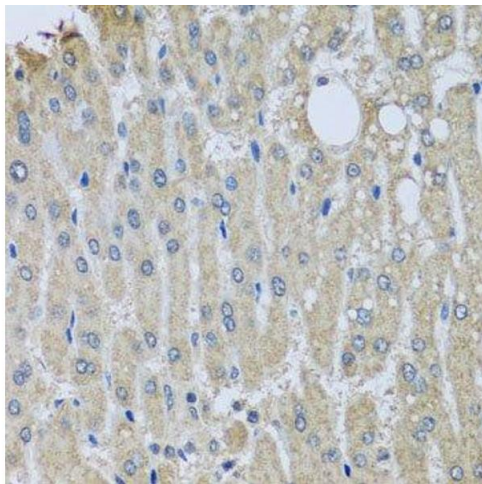
Western Blotting

Image 1. Western blot analysis of extracts of various cell lines, using SYT11 antibody.



Immunohistochemistry (Paraffin-embedded Sections)

Image 2. Immunohistochemistry of paraffin-embedded human stomach using SYT11 antibody.



Immunohistochemistry (Paraffin-embedded Sections)

Image 3. Immunohistochemistry of paraffin-embedded human liver injury using SYT11 antibody.

Please check the [product details page](#) for more images. Overall 4 images are available for ABIN6148785.