



[Go to Product page](#)

Datasheet for ABIN6148878  
**anti-TBC1D1 antibody (AA 520-710)**

2 Images

Overview

Quantity:	100 µL
Target:	TBC1D1
Binding Specificity:	AA 520-710
Reactivity:	Human
Host:	Rabbit
Clonality:	Polyclonal
Conjugate:	This TBC1D1 antibody is un-conjugated
Application:	Western Blotting (WB)

Product Details

Immunogen:	Recombinant fusion protein containing a sequence corresponding to amino acids 520-710 of human TBC1D1 (NP_055988.2).
Sequence:	GLQEHISISVD LDSSLSSTLS NTSKEPSVCE KEALPISESS FKLLGSSIDL SSDSESHLPE EPAPLSPQQA FRRRANTLSH FPIECQEPQ PARGSPGVSQ RKLMMRYHSVS TETPHERKDF ESKANHLGDS GGTPVKTRRH SWRQQIFLRV ATPQKACDSS SRYEDYSELG ELPPRSPLEP VCEDGPFPGPP P
Isotype:	IgG
Cross-Reactivity:	Human, Mouse, Rat
Characteristics:	Polyclonal Antibodies

## Target Details

---

Target:	TBC1D1
Alternative Name:	TBC1D1 ( <a href="#">TBC1D1 Products</a> )
Background:	TBC1D1 is the founding member of a family of proteins sharing a 180- to 200-amino acid TBC domain presumed to have a role in regulating cell growth and differentiation. These proteins share significant homology with TRE2 (USP6, MIM 604334), yeast Bub2, and CDC16 (MIM 603461) (White et al., 2000 [PubMed 10965142]).[supplied by OMIM, Mar 2008],TBC1D1,TBC,TBC1,Signal Transduction,G protein signaling,Signal Transduction,Endocrine & Metabolism,Insulin Receptor Signaling Pathway,TBC1D1
Molecular Weight:	131 kDa/133 kDa
Gene ID:	23216
UniProt:	<a href="#">Q86T10</a>

## Application Details

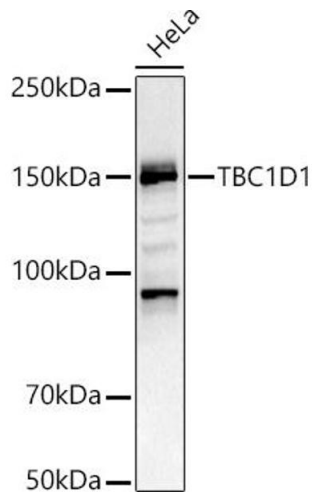
---

Application Notes:	WB,1:500 - 1:2000
Restrictions:	For Research Use only

## Handling

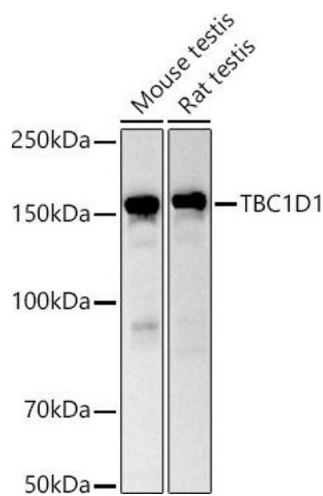
---

Format:	Liquid
Buffer:	PBS with 0.02 % sodium azide,50 % glycerol, pH 7.3.
Preservative:	Sodium azide
Precaution of Use:	This product contains Sodium azide: a POISONOUS AND HAZARDOUS SUBSTANCE which should be handled by trained staff only.
Storage:	-20 °C
Storage Comment:	Store at -20°C. Avoid freeze / thaw cycles.



#### Western Blotting

**Image 1.** Western blot analysis of extracts of HeLa cells, using TBC1D1 antibody (ABIN6129487, ABIN6148878, ABIN6148879 and ABIN6225024) at 1:1000 dilution. Secondary antibody: HRP Goat Anti-Rabbit IgG (H+L) (ABIN1684268 and ABIN3020597) at 1:10000 dilution. Lysates/proteins: 25 µg per lane. Blocking buffer: 3 % nonfat dry milk in TBST. Detection: ECL Basic Kit (RM00020). Exposure time: 180s.



#### Western Blotting

**Image 2.** Western blot analysis of extracts of various cell lines, using TBC1D1 antibody (ABIN6129487, ABIN6148878, ABIN6148879 and ABIN6225024) at 1:1000 dilution. Secondary antibody: HRP Goat Anti-Rabbit IgG (H+L) (ABIN1684268 and ABIN3020597) at 1:10000 dilution. Lysates/proteins: 25 µg per lane. Blocking buffer: 3 % nonfat dry milk in TBST. Detection: ECL Basic Kit (RM00020). Exposure time: 90s.