

Datasheet for ABIN6148882
anti-TBC1D23 antibody (AA 250-600)



[Go to Product page](#)

1 Image

Overview

| | |
|----------------------|--|
| Quantity: | 100 µL |
| Target: | TBC1D23 |
| Binding Specificity: | AA 250-600 |
| Reactivity: | Human |
| Host: | Rabbit |
| Clonality: | Polyclonal |
| Conjugate: | This TBC1D23 antibody is un-conjugated |
| Application: | Western Blotting (WB) |

Product Details

| | |
|-------------------|---|
| Immunogen: | Recombinant fusion protein containing a sequence corresponding to amino acids 250-600 of human TBC1D23 (NP_001186127.1). |
| Sequence: | SDSKEEVIKF LENTPSSLNI EDIEDLFLSLA QYYCSKTPAS FRKDNHHLFG STLLGIKDDD ADLSQALCLA ISVSEILQAN QLQGEVRRFF VVDCRPAEQY NAGHLSTAFH LDSLMLQNP SEFAQSVKSL LEAQKQSIES GSIAGGEHLC FMGSGREEED MYMNMVLAHF LQKNKEYVSI ASGGFMALQQ HLADINVDGP ENGYGHWIAS TSGSRSSINS VDGESPNGSS DRGMKSLVNK MTVALKTKSV NVREKVISFI ENTSTPVDRM SFNLPWPDRS CTERHVSSSD RVGKPYRGVK PVFSIGDEEE YDTDEIDSSS MSDDDRKEVV NIQTWINKPD VKHHFPCKEV K |
| Isotype: | IgG |
| Cross-Reactivity: | Human, Mouse |
| Characteristics: | Polyclonal Antibodies |

Target Details

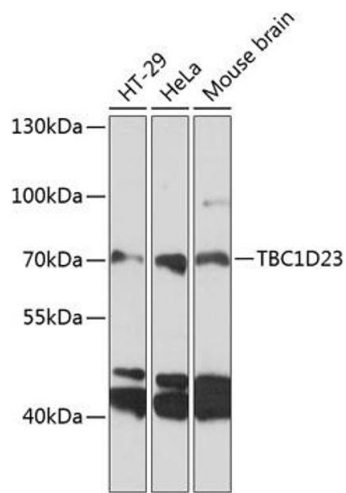
| | |
|-------------------|---|
| Target: | TBC1D23 |
| Alternative Name: | TBC1D23 (TBC1D23 Products) |
| Background: | <p>Putative Rab GTPase-activating protein which plays a role in vesicular trafficking. Involved in endosome-to-Golgi trafficking. Acts as a bridging protein by binding simultaneously to golgins, including GOLGA1 and GOLGA4, located at the trans-Golgi, and to the WASH complex, located on endosome-derived vesicles. Together with WDR11 complex facilitates the golgin-mediated capture of vesicles generated using AP-1. Plays a role in brain development, including in cortical neuron positioning (By similarity. May also be important for neurite outgrowth, possibly through its involvement in membrane trafficking and cargo delivery, 2 processes that are essential for axonal and dendritic growth (By similarity. May act as a general inhibitor of innate immunity signaling, strongly inhibiting multiple TLR and dectin/CLEC7A-signaling pathways. Does not alter initial activation events, but instead affects maintenance of inflammatory gene expression several hours after bacterial lipopolysaccharide (LPS challenge (By similarity.,TBC1D23,NS4ATP1,TBC1D23</p> |
| Molecular Weight: | 76 kDa/78 kDa |
| Gene ID: | 55773 |
| UniProt: | Q9NUY8 |

Application Details

| | |
|--------------------|-----------------------|
| Application Notes: | WB,1:500 - 1:2000 |
| Restrictions: | For Research Use only |

Handling

| | |
|--------------------|--|
| Format: | Liquid |
| Buffer: | PBS with 0.02 % sodium azide,50 % glycerol, pH 7.3. |
| Preservative: | Sodium azide |
| Precaution of Use: | This product contains Sodium azide: a POISONOUS AND HAZARDOUS SUBSTANCE which should be handled by trained staff only. |
| Storage: | -20 °C |
| Storage Comment: | Store at -20°C. Avoid freeze / thaw cycles. |



Western Blotting

Image 1. Western blot analysis of extracts of various cell lines, using TBC1D23 antibody (ABIN6133202, ABIN6148882, ABIN6148883 and ABIN6224939) at 1:3000 dilution. Secondary antibody: HRP Goat Anti-Rabbit IgG (H+L) (ABIN1684268 and ABIN3020597) at 1:10000 dilution. Lysates/proteins: 25 µg per lane. Blocking buffer: 3 % nonfat dry milk in TBST. Detection: ECL Basic Kit (RM00020). Exposure time: 60s.