

Datasheet for ABIN6148908
anti-T-Box 22 antibody (AA 291-520)



[Go to Product page](#)

1 Image

Overview

Quantity:	100 µL
Target:	T-Box 22 (TBX22)
Binding Specificity:	AA 291-520
Reactivity:	Human
Host:	Rabbit
Clonality:	Polyclonal
Conjugate:	This T-Box 22 antibody is un-conjugated
Application:	Western Blotting (WB)

Product Details

Immunogen:	Recombinant fusion protein containing a sequence corresponding to amino acids 291-520 of human TBX22 (NP_058650.1).
Sequence:	LDGLLETYPW RPSFTLDFKT FGADTQSGSS GSSPVTSSGG APSPLNSLLS PLCFSPMFHL PTSSLGMPCP EAYLPNVNLP LCYKICPTNF WQQQPLVLPV PERLASSNSS QSLAPLMMEV PMLSSLGVTN SKSGSSEDSS DQYLQAPNST NQMLYGLQSP GNIFLPNSIT PEALSCSFHP SYDFYRYNFS MPSRLISGSN HMKVNDSDSQV SFGEGKCNHV HWYPAINHYL
Isotype:	IgG
Cross-Reactivity:	Human, Mouse, Rat
Characteristics:	Polyclonal Antibodies

Target Details

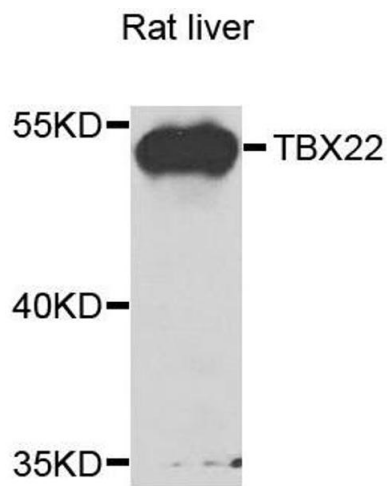
Target:	T-Box 22 (TBX22)
Alternative Name:	TBX22 (TBX22 Products)
Background:	This gene is a member of a phylogenetically conserved family of genes that share a common DNA-binding domain, the T-box. T-box genes encode transcription factors involved in the regulation of developmental processes. Mutations in this gene have been associated with the inherited X-linked disorder, Cleft palate with ankyloglossia, and it is believed to play a major role in human palatogenesis. Alternatively spliced transcript variants encoding different isoforms have been found for this gene.,TBX22,ABERS,CLPA,CPX,TBXX,dJ795G23.1,T-box 22,Epigenetics & Nuclear Signaling,Transcription Factors,TBX22
Molecular Weight:	44 kDa/57 kDa
Gene ID:	50945
UniProt:	Q9Y458

Application Details

Application Notes:	WB,1:500 - 1:2000
Comment:	HIGH QUALITY
Restrictions:	For Research Use only

Handling

Format:	Liquid
Buffer:	PBS with 0.02 % sodium azide,50 % glycerol, pH 7.3.
Preservative:	Sodium azide
Precaution of Use:	This product contains Sodium azide: a POISONOUS AND HAZARDOUS SUBSTANCE which should be handled by trained staff only.
Storage:	-20 °C
Storage Comment:	Store at -20°C. Avoid freeze / thaw cycles.



Western Blotting

Image 1. Western blot analysis of extracts of rat liver, using TBX22 antibody.