



[Go to Product page](#)

Datasheet for ABIN6149009

anti-Tescalcin antibody (AA 135-214)

1 Image

Overview

Quantity:	100 µL
Target:	Tescalcin (TESC)
Binding Specificity:	AA 135-214
Reactivity:	Human
Host:	Rabbit
Clonality:	Polyclonal
Conjugate:	This Tescalcin antibody is un-conjugated
Application:	Western Blotting (WB)

Product Details

Immunogen:	Recombinant fusion protein containing a sequence corresponding to amino acids 135-214 of human TESC (NP_060369.3).
Sequence:	YRNVVEELLS GNPHEKESA RSIADGAMME AASVCMGQME PDQVYEGITF EDFLKIWQGI DIETKMHVRF LNMETMALCH
Isotype:	IgG
Cross-Reactivity:	Human
Characteristics:	Polyclonal Antibodies

Target Details

Target:	Tescalcin (TESC)
---------	------------------

Target Details

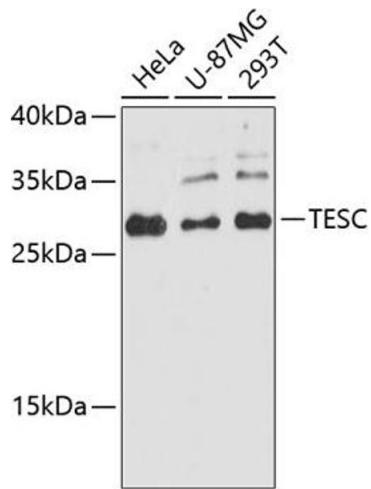
Alternative Name:	TESC (TESC Products)
Background:	Functions as an integral cofactor in cell pH regulation by controlling plasma membrane-type Na(+)/H(+) exchange activity. Promotes the maturation, transport, cell surface stability and exchange activity of SLC9A1/NHE1 at the plasma membrane. Promotes the induction of hematopoietic stem cell differentiation toward megakaryocytic lineage. Essential for the coupling of ERK cascade activation with the expression of ETS family genes in megakaryocytic differentiation. Also involved in granulocytic differentiation in a ERK-dependent manner. Inhibits the phosphatase activity of calcineurin.,TESC,CHP3,TSC,tescalcin,Cancer,Signal Transduction,Cell Biology & Developmental Biology,Endocrine & Metabolism,Neuroscience,Calcium Signaling,TESC
Molecular Weight:	18 kDa/21 kDa/24 kDa
Gene ID:	54997
UniProt:	Q96BS2
Pathways:	Proton Transport

Application Details

Application Notes:	WB,1:500 - 1:2000
Restrictions:	For Research Use only

Handling

Format:	Liquid
Buffer:	PBS with 0.02 % sodium azide,50 % glycerol, pH 7.3.
Preservative:	Sodium azide
Precaution of Use:	This product contains Sodium azide: a POISONOUS AND HAZARDOUS SUBSTANCE which should be handled by trained staff only.
Storage:	-20 °C
Storage Comment:	Store at -20°C. Avoid freeze / thaw cycles.



Western Blotting

Image 1. Western blot analysis of extracts of various cell lines, using TESC antibody (ABIN6132911, ABIN6149009, ABIN6149011 and ABIN6224756) at 1:3000 dilution. Secondary antibody: HRP Goat Anti-Rabbit IgG (H+L) (ABIN1684268 and ABIN3020597) at 1:10000 dilution. Lysates/proteins: 25 µg per lane. Blocking buffer: 3 % nonfat dry milk in TBST. Detection: ECL Basic Kit (RM00020). Exposure time: 10s.