



[Go to Product page](#)

Datasheet for ABIN6149107
anti-THAP2 antibody (AA 83-228)

2 Images

Overview

Quantity:	100 µL
Target:	THAP2
Binding Specificity:	AA 83-228
Reactivity:	Human
Host:	Rabbit
Clonality:	Polyclonal
Conjugate:	This THAP2 antibody is un-conjugated
Application:	Western Blotting (WB)

Product Details

Immunogen:	Recombinant fusion protein containing a sequence corresponding to amino acids 83-228 of human THAP2 (NP_113623.1).
Sequence:	CTHIKSMKLLK SRNLLKKNNS CSPAGPSNLK SNISSQQVLL EHSYAFRNPM EAKKRIIKLE KEIASLRRKM KTCLQKERRA TRRWIKATCL VKNLEANSVL PKGTSEHMLP TALSSLPLED FKILEQDQQD KTLLSLNLKQ TKSTFI
Isotype:	IgG
Cross-Reactivity:	Mouse, Rat
Characteristics:	Polyclonal Antibodies

Target Details

Target:	THAP2
---------	-------

Target Details

Alternative Name:	THAP2 (THAP2 Products)
Background:	THAP2,Epigenetics & Nuclear Signaling,THAP2
Molecular Weight:	26 kDa
Gene ID:	83591
UniProt:	Q9H0W7

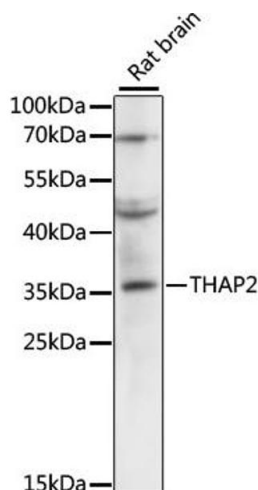
Application Details

Application Notes:	WB,1:500 - 1:2000
Comment:	HIGH QUALITY
Restrictions:	For Research Use only

Handling

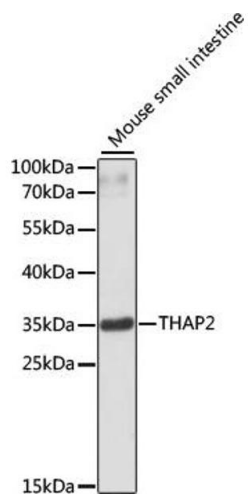
Format:	Liquid
Buffer:	PBS with 0.02 % sodium azide,50 % glycerol, pH 7.3.
Preservative:	Sodium azide
Precaution of Use:	This product contains Sodium azide: a POISONOUS AND HAZARDOUS SUBSTANCE which should be handled by trained staff only.
Storage:	-20 °C
Storage Comment:	Store at -20°C. Avoid freeze / thaw cycles.

Images



Western Blotting

Image 1. Western blot analysis of extracts of rat brain, using TH antibody (ABIN6133215, ABIN6149107, ABIN6149108 and ABIN6220276) at 1:3000 dilution. Secondary antibody: HRP Goat Anti-Rabbit IgG (H+L) (ABIN1684268 and ABIN3020597) at 1:10000 dilution. Lysates/proteins: 25 µg per lane. Blocking buffer: 3 % nonfat dry milk in TBST. Detection: ECL Enhanced Kit (RM00021). Exposure time: 5s.



Western Blotting

Image 2. Western blot analysis of extracts of mouse small intestine, using TH antibody (ABIN6133215, ABIN6149107, ABIN6149108 and ABIN6220276) at 1:3000 dilution. Secondary antibody: HRP Goat Anti-Rabbit IgG (H+L) (ABIN1684268 and ABIN3020597) at 1:10000 dilution. Lysates/proteins: 25 µg per lane. Blocking buffer: 3 % nonfat dry milk in TBST. Detection: ECL Basic Kit (RM00020). Exposure time: 90s.