



[Go to Product page](#)

Datasheet for ABIN6149133
anti-THUMPD3 antibody (AA 1-250)

4 Images

Overview

Quantity:	100 µL
Target:	THUMPD3
Binding Specificity:	AA 1-250
Reactivity:	Human
Host:	Rabbit
Clonality:	Polyclonal
Conjugate:	This THUMPD3 antibody is un-conjugated
Application:	Western Blotting (WB), Immunohistochemistry (IHC)

Product Details

Immunogen:	Recombinant fusion protein containing a sequence corresponding to amino acids 1-250 of human THUMPD3 (NP_056268.2).
Sequence:	MCDIEEATNQ LLDVNLHENQ KSVQVTESDL GSESELLVTI GATVPTGFEQ TAADEVREKL GSSCKISRDR GKIYFVISVE SLAQVHCLRS VDNLFVVVQE FQDYQFKQTK EEVLKDFEDL AGKLPWSNPL KVVKINASF KKKAKRKKIN QNSSKEKINN GQEVKIDQRN VKKEFTSHAL DSHILDYYEN PAIKEDVSTL IGDDLASCKD ETESSKEET EPQVLKFRVT CNRAGEKHCF TSNEAARDFG
Isotype:	IgG
Cross-Reactivity:	Human, Mouse, Rat
Characteristics:	Polyclonal Antibodies

Target Details

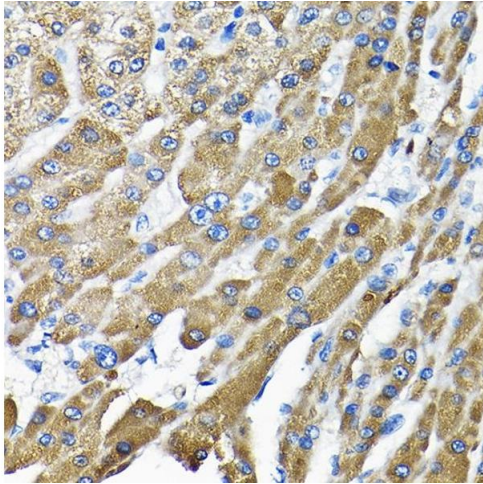
Target:	THUMPD3
Alternative Name:	THUMPD3 (THUMPD3 Products)
Background:	THUMPD3,Epigenetics & Nuclear Signaling,Cell Biology & Developmental Biology,THUMPD3
Molecular Weight:	57 kDa
Gene ID:	25917
UniProt:	Q9BV44

Application Details

Application Notes:	WB,1:500 - 1:2000,IHC,1:50 - 1:200
Comment:	HIGH QUALITY
Restrictions:	For Research Use only

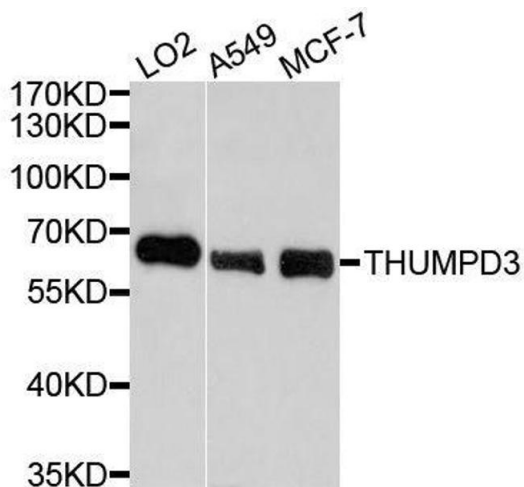
Handling

Format:	Liquid
Buffer:	PBS with 0.02 % sodium azide,50 % glycerol, pH 7.3.
Preservative:	Sodium azide
Precaution of Use:	This product contains Sodium azide: a POISONOUS AND HAZARDOUS SUBSTANCE which should be handled by trained staff only.
Storage:	-20 °C
Storage Comment:	Store at -20°C. Avoid freeze / thaw cycles.



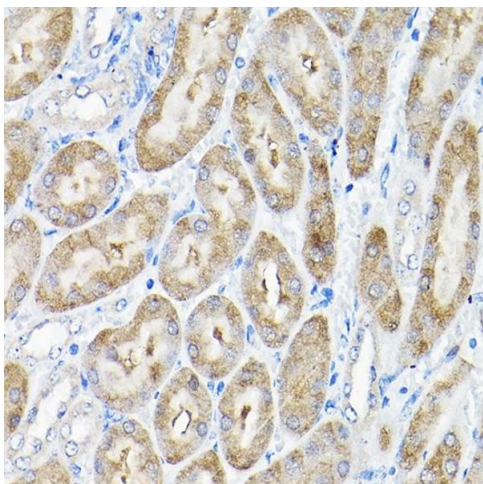
Immunohistochemistry

Image 1. Immunohistochemistry of paraffin-embedded human liver cancer using THUMP3 Rabbit pAb (ABIN6132951, ABIN6149133, ABIN6149134 and ABIN6214652) at dilution of 1:200 (40x lens). Perform high pressure antigen retrieval with 10 mM citrate buffer pH 6.0 before commencing with IHC staining protocol.



Western Blotting

Image 2. Western blot analysis of extracts of various cell lines, using THUMP3 antibody.



Immunohistochemistry

Image 3. Immunohistochemistry of paraffin-embedded mouse kidney using THUMP3 Rabbit pAb (ABIN6132951, ABIN6149133, ABIN6149134 and ABIN6214652) at dilution of 1:200 (40x lens). Perform high pressure antigen retrieval with 10 mM citrate buffer pH 6.0 before commencing with IHC staining protocol.

Please check the [product details page](#) for more images. Overall 4 images are available for ABIN6149133.