

Datasheet for ABIN6149137  
**anti-TIA1 antibody (C-Term)**[Go to Product page](#)

## 2 Images

## Overview

Quantity:	100 µL
Target:	TIA1
Binding Specificity:	C-Term
Reactivity:	Human
Host:	Rabbit
Clonality:	Polyclonal
Conjugate:	This TIA1 antibody is un-conjugated
Application:	Western Blotting (WB), Immunofluorescence (IF)

## Product Details

Immunogen:	A synthetic peptide corresponding to a sequence within amino acids 300 to the C-terminus of human TIA1 (NP_071505.2).
Sequence:	IGYPQPYGQW GQWYGNAQQI GQYMPNGWQV PAYGMYGQAW NQQGFNQTQS SAPWMGPNYG VQPPQGQNGS MLPNQPSGYR VAGYETQ
Isotype:	IgG
Cross-Reactivity:	Human, Mouse
Characteristics:	Polyclonal Antibodies

## Target Details

Target:	TIA1
---------	------

## Target Details

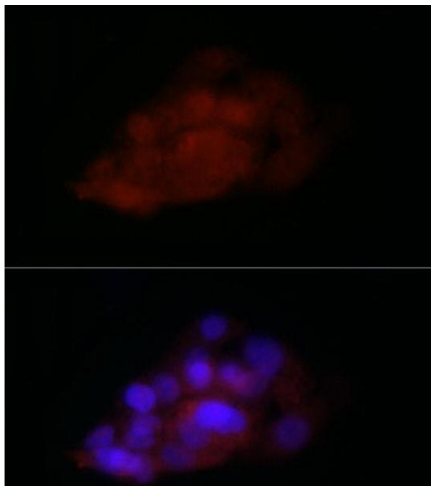
Alternative Name:	TIA1 ( <a href="#">TIA1 Products</a> )
Background:	The product encoded by this gene is a member of a RNA-binding protein family and possesses nucleolytic activity against cytotoxic lymphocyte (CTL) target cells. It has been suggested that this protein may be involved in the induction of apoptosis as it preferentially recognizes poly(A) homopolymers and induces DNA fragmentation in CTL targets. The major granule-associated species is a 15- kDa protein that is thought to be derived from the carboxyl terminus of the 40- kDa product by proteolytic processing. Alternative splicing resulting in different isoforms of this gene product has been described in the literature.,TIA1,TIA-1,WDM,Epigenetics & Nuclear Signaling,RNA Binding,Cell Biology & Developmental Biology,Apoptosis,Immunology & Inflammation,TIA1
Molecular Weight:	24 kDa/41 kDa/42 kDa
Gene ID:	7072
UniProt:	<a href="#">P31483</a>

## Application Details

Application Notes:	WB,1:500 - 1:2000,IF,1:50 - 1:200
Comment:	HIGH QUALITY
Restrictions:	For Research Use only

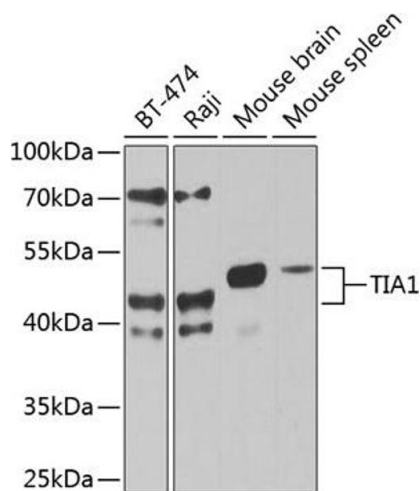
## Handling

Format:	Liquid
Buffer:	PBS with 0.02 % sodium azide,50 % glycerol, pH 7.3.
Preservative:	Sodium azide
Precaution of Use:	This product contains Sodium azide: a POISONOUS AND HAZARDOUS SUBSTANCE which should be handled by trained staff only.
Storage:	-20 °C
Storage Comment:	Store at -20°C. Avoid freeze / thaw cycles.



### Immunofluorescence

**Image 1.** Immunofluorescence analysis of HepG2 cells using TI Rabbit pAb (2523) at dilution of 1:100 (40x lens). Blue: DAPI for nuclear staining.



### Western Blotting

**Image 2.** Western blot analysis of extracts of various cell lines, using TI antibody (2523) at 1:1000 dilution. Secondary antibody: HRP Goat Anti-Rabbit IgG (H+L) (ABIN1684268 and ABIN3020597) at 1:10000 dilution. Lysates/proteins: 25 µg per lane. Blocking buffer: 3 % nonfat dry milk in TBST. Detection: ECL Basic Kit (RM00020). Exposure time: 15s.