



[Go to Product page](#)

Datasheet for ABIN6149176  
**anti-TIMP1 antibody (AA 24-207)**

2 Images

Overview

|                      |  |
|----------------------|--|
| Quantity:            | 100 µL   |
| Target:              | TIMP1  |
| Binding Specificity: | AA 24-207                                      |
| Reactivity:          | Human  |
| Host:                | Rabbit   |
| Clonality:           | Polyclonal                                     |
| Conjugate:           | This TIMP1 antibody is un-conjugated           |
| Application:         | Western Blotting (WB), Immunofluorescence (IF) |

Product Details

|                   |  |
|-------------------|--|
| Immunogen:        | Recombinant fusion protein containing a sequence corresponding to amino acids 24-207 of human TIMP1 (NP_003245.1).   |
| Sequence:         | CTCVPPHPQT AFCNSDLVIR AKFVGTPEVN QTTLYQRYEI KMTKMYKGFQ ALGDAADIRF<br>VYTPAMESVC GYFHRSHNRS EEFLIAGKLQ DGLLHITTCS FVAPWNSLSL AQRRTGFTKTY<br>TVGCEECTVF PCLSIPCKLQ SGTCLWTDQ LLQGSEKGFQ SRHLACLPRE PGLCTWQSLR SQIA |
| Isotype:          | IgG  |
| Cross-Reactivity: | Human, Mouse   |
| Characteristics:  | Polyclonal Antibodies  |

Target Details

|         |       |
|---------|-------|
| Target: | TIMP1 |
|---------|-------|

## Target Details

---

Alternative Name: TIMP1 ([TIMP1 Products](#))

---

Background: This gene belongs to the TIMP gene family. The proteins encoded by this gene family are natural inhibitors of the matrix metalloproteinases (MMPs), a group of peptidases involved in degradation of the extracellular matrix. In addition to its inhibitory role against most of the known MMPs, the encoded protein is able to promote cell proliferation in a wide range of cell types, and may also have an anti-apoptotic function. Transcription of this gene is highly inducible in response to many cytokines and hormones. In addition, the expression from some but not all inactive X chromosomes suggests that this gene inactivation is polymorphic in human females. This gene is located within intron 6 of the synapsin I gene and is transcribed in the opposite direction.,TIMP1,CLGI,EPA,EPO,HCI,TIMP,TIMP-1,Cancer,Invasion and Metastasis,Signal Transduction,Cell Biology & Developmental Biology,Cytoskeleton,Extracellular Matrix,Ubiquitin,Immunology & Inflammation,IL-6 Receptor Signaling Pathway,Cardiovascular,Angiogenesis,TIMP1

---

Molecular Weight: 23 kDa

---

Gene ID: 7076

---

UniProt: [P01033](#)

---

## Application Details

---

Application Notes: WB,1:500 - 1:2000,IF,1:50 - 1:200

---

Restrictions: For Research Use only

---

## Handling

---

Format: Liquid

---

Buffer: PBS with 0.02 % sodium azide,50 % glycerol, pH 7.3.

---

Preservative: Sodium azide

---

Precaution of Use: This product contains Sodium azide: a POISONOUS AND HAZARDOUS SUBSTANCE which should be handled by trained staff only.

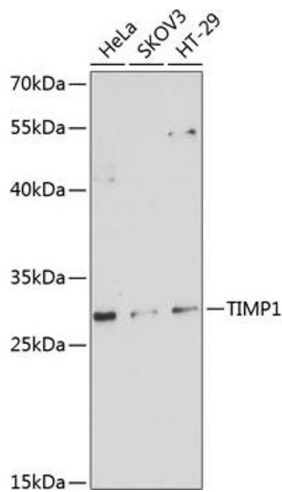
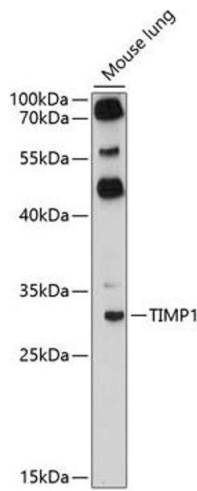
---

Storage: -20 °C

---

Storage Comment: Store at -20°C. Avoid freeze / thaw cycles.

---



### Immunofluorescence

**Image 1.** Immunofluorescence analysis of HeLa cells using TIMP1 antibody (ABIN6128284, ABIN6149176, ABIN6149177 and ABIN6218052) at dilution of 1:100. Blue: DAPI for nuclear staining.

### Western Blotting

**Image 2.** Western blot analysis of extracts of various cell lines, using TIMP1 antibody (ABIN6128284, ABIN6149176, ABIN6149177 and ABIN6218052) at 1:1000 dilution. Secondary antibody: HRP Goat Anti-Rabbit IgG (H+L) (ABIN1684268 and ABIN3020597) at 1:10000 dilution. Lysates/proteins: 25 µg per lane. Blocking buffer: 3 % nonfat dry milk in TBST. Detection: ECL Basic Kit (RM00020). Exposure time: 90s.