

Datasheet for ABIN6149240
anti-TMC1 antibody (AA 600-700)



[Go to Product page](#)

4 Images

Overview

Quantity:	100 µL
Target:	TMC1
Binding Specificity:	AA 600-700
Reactivity:	Human
Host:	Rabbit
Clonality:	Polyclonal
Conjugate:	This TMC1 antibody is un-conjugated
Application:	Western Blotting (WB), Immunohistochemistry (IHC)

Product Details

Immunogen:	A synthetic peptide corresponding to a sequence within amino acids 600-700 of human TMC1 (NP_619636.2).
Sequence:	INILRLHTSM YFQCWAVMCC NVPEARVFKA SRSNNFYLG M LLLILFLSTM PVL YMIVSLP PSFD CGPFSG KNRMFEVIGE TLEHDFPSW M AKILRQLSNP G
Isotype:	IgG
Cross-Reactivity:	Human, Mouse, Rat
Characteristics:	Polyclonal Antibodies

Target Details

Target:	TMC1
---------	------

Target Details

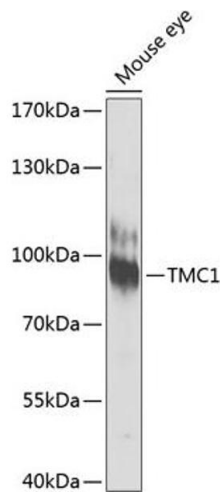
Alternative Name:	TMC1 (TMC1 Products)
Background:	This gene is considered a member of a gene family predicted to encode transmembrane proteins. The specific function of this gene is unknown, however, it is known to be required for normal function of cochlear hair cells. Mutations in this gene have been associated with progressive postlingual hearing loss and profound prelingual deafness.,TMC1,DFNA36,DFNB11,DFNB7,Neuroscience,TMC1
Molecular Weight:	87 kDa
Gene ID:	117531
UniProt:	Q8TDI8
Pathways:	Sensory Perception of Sound

Application Details

Application Notes:	WB,1:500 - 1:2000,IHC,1:50 - 1:200
Restrictions:	For Research Use only

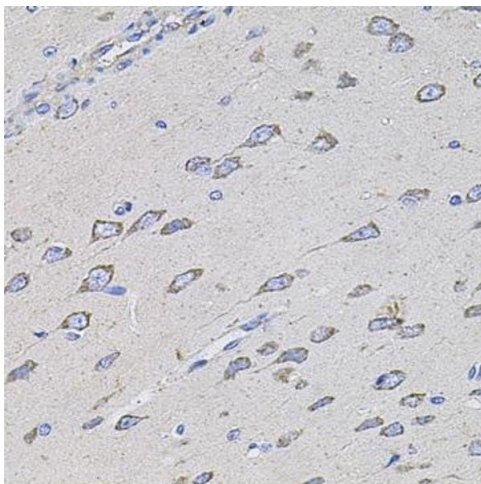
Handling

Format:	Liquid
Buffer:	PBS with 0.02 % sodium azide,50 % glycerol, pH 7.3.
Preservative:	Sodium azide
Precaution of Use:	This product contains Sodium azide: a POISONOUS AND HAZARDOUS SUBSTANCE which should be handled by trained staff only.
Storage:	-20 °C
Storage Comment:	Store at -20°C. Avoid freeze / thaw cycles.



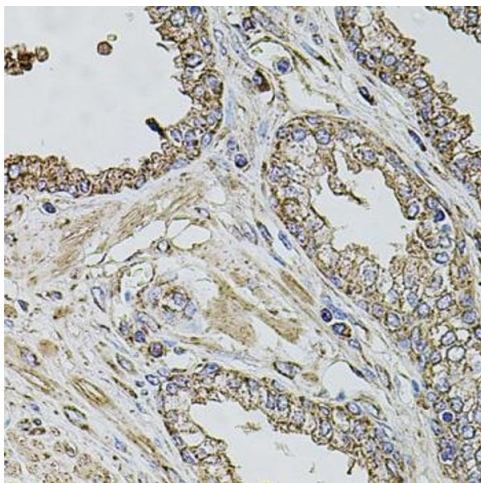
Western Blotting

Image 1. Western blot analysis of extracts of mouse eye, using TMC1 antibody (ABIN6134923, ABIN6149240, ABIN6149242 and ABIN6224704) at 1:1000 dilution. Secondary antibody: HRP Goat Anti-Rabbit IgG (H+L) (ABIN1684268 and ABIN3020597) at 1:10000 dilution. Lysates/proteins: 25 µg per lane. Blocking buffer: 3 % nonfat dry milk in TBST. Detection: ECL Enhanced Kit (RM00021). Exposure time: 90s.



Immunohistochemistry

Image 2. Immunohistochemistry of paraffin-embedded rat brain using TMC1 antibody (ABIN6134923, ABIN6149240, ABIN6149242 and ABIN6224704) at dilution of 1:100 (40x lens). Perform microwave antigen retrieval with 10 mM PBS buffer pH 7.2 before commencing with IHC staining protocol.



Immunohistochemistry

Image 3. Immunohistochemistry of paraffin-embedded human prostate using TMC1 antibody (ABIN6134923, ABIN6149240, ABIN6149242 and ABIN6224704) at dilution of 1:100 (40x lens). Perform microwave antigen retrieval with 10 mM PBS buffer pH 7.2 before commencing with IHC staining protocol.

Please check the [product details page](#) for more images. Overall 4 images are available for ABIN6149240.