



[Go to Product page](#)

Datasheet for ABIN6149262  
**anti-TMEM189 antibody (C-Term)**

3 Images

Overview

Quantity:	100 µL
Target:	TMEM189
Binding Specificity:	C-Term
Reactivity:	Human
Host:	Rabbit
Clonality:	Polyclonal
Conjugate:	This TMEM189 antibody is un-conjugated
Application:	Western Blotting (WB), Immunohistochemistry (IHC)

Product Details

Immunogen:	A synthetic peptide corresponding to a sequence within amino acids 200 to the C-terminus of human TMEM189 (NP_954580.1).
Sequence:	TLLQDWHVIL PRKHHRIHHV SPHETYFCIT TGWLNYPLEK IGFWRRLLEDL IQGLTGEKPR ADDMKWAQKI K
Isotype:	IgG
Cross-Reactivity:	Human
Characteristics:	Polyclonal Antibodies

Target Details

Target:	TMEM189
---------	---------

## Target Details

---

Alternative Name:	TMEM189 ( <a href="#">TMEM189 Products</a> )
Background:	<p>Co-transcription of this gene and the neighboring downstream gene (ubiquitin-conjugating enzyme E2 variant 1) generates a rare read-through transcript, which encodes a fusion protein comprised of sequence sharing identity with each individual gene product. The protein encoded by this individual gene lacks a UEV1 domain but includes three transmembrane regions. Alternative splicing results in multiple transcript variants.,TMEM189,KUA,Epigenetics &amp; Nuclear Signaling,TMEM189</p>
Molecular Weight:	30 kDa/31 kDa
Gene ID:	387521
UniProt:	<a href="#">A5PLL7</a>
Pathways:	<a href="#">TCR Signaling</a> , <a href="#">Toll-Like Receptors Cascades</a>

## Application Details

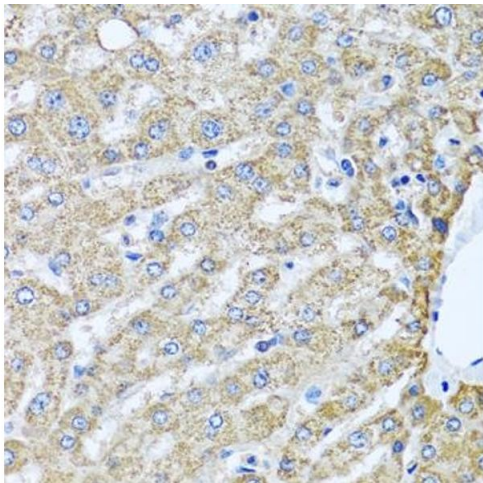
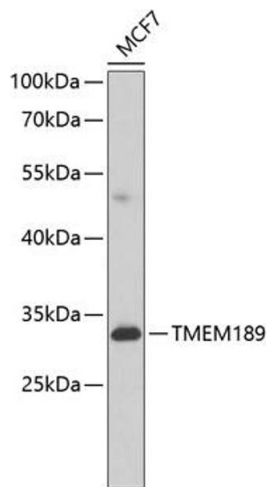
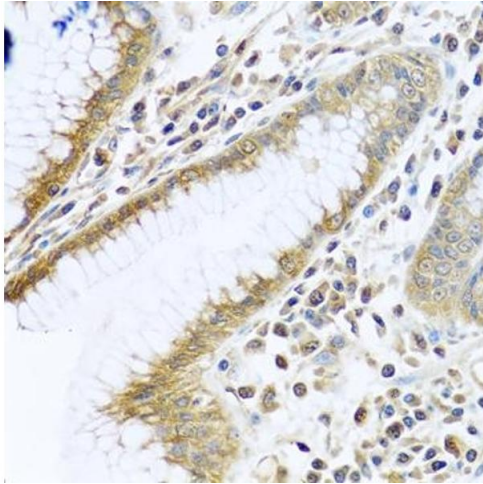
---

Application Notes:	WB,1:500 - 1:2000,IHC,1:50 - 1:100
Comment:	HIGH QUALITY
Restrictions:	For Research Use only

## Handling

---

Format:	Liquid
Buffer:	PBS with 0.02 % sodium azide,50 % glycerol, pH 7.3.
Preservative:	Sodium azide
Precaution of Use:	This product contains Sodium azide: a POISONOUS AND HAZARDOUS SUBSTANCE which should be handled by trained staff only.
Storage:	-20 °C
Storage Comment:	Store at -20°C. Avoid freeze / thaw cycles.



### Immunohistochemistry

**Image 1.** Immunohistochemistry of paraffin-embedded human stomach using TMEM189 antibody (ABIN6134447, ABIN6149262, ABIN6149263 and ABIN6224423) at dilution of 1:100 (40x lens). Perform microwave antigen retrieval with 10 mM PBS buffer pH 7.2 before commencing with IHC staining protocol.

### Western Blotting

**Image 2.** Western blot analysis of extracts of MCF-7 cells, using TMEM189 antibody (ABIN6134447, ABIN6149262, ABIN6149263 and ABIN6224423) at 1:1000 dilution. Secondary antibody: HRP Goat Anti-Rabbit IgG (H+L) (ABIN1684268 and ABIN3020597) at 1:10000 dilution. Lysates/proteins: 25 µg per lane. Blocking buffer: 3 % nonfat dry milk in TBST. Detection: ECL Basic Kit (RM00020). Exposure time: 90s.

### Immunohistochemistry

**Image 3.** Immunohistochemistry of paraffin-embedded human liver using TMEM189 antibody (ABIN6134447, ABIN6149262, ABIN6149263 and ABIN6224423) at dilution of 1:100 (40x lens). Perform microwave antigen retrieval with 10 mM PBS buffer pH 7.2 before commencing with IHC staining protocol.