

Datasheet for ABIN6149309 anti-TNFRSF11A antibody (AA 466-616)



[Go to Product page](#)

2 Images

Overview

Quantity:	100 µL
Target:	TNFRSF11A
Binding Specificity:	AA 466-616
Reactivity:	Human
Host:	Rabbit
Clonality:	Polyclonal
Conjugate:	This TNFRSF11A antibody is un-conjugated
Application:	Western Blotting (WB), Immunohistochemistry (IHC), Immunofluorescence (IF)

Product Details

Immunogen:	Recombinant fusion protein containing a sequence corresponding to amino acids 466-616 of human TNFRSF11A (NP_003830.1).
Sequence:	RGPLPQCAYG MGLPPEEEAS RTEARDQPED GADGRLPSSA RAGAGSGSSP GGQSPASGNV TGNSNSTFIS SGQVMNFKGD IIVVYVSQTS QEGAAAAAEP MGRPVQEETL ARRDSFAGNG PRFPDPCGGP EGLREPEKAS RVPQEQQGAK A
Isotype:	IgG
Cross-Reactivity:	Human, Mouse, Rat
Characteristics:	Polyclonal Antibodies

Target Details

Target:	TNFRSF11A
---------	-----------

Target Details

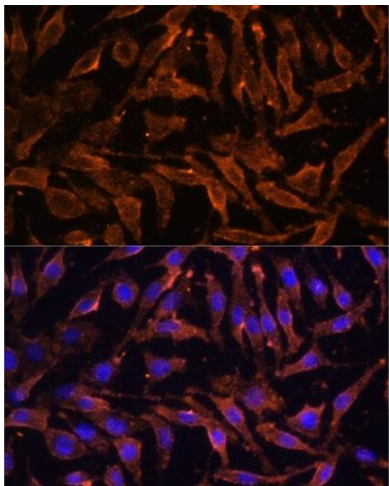
Alternative Name:	TNFRSF11A (TNFRSF11A Products)
Background:	<p>The protein encoded by this gene is a member of the TNF-receptor superfamily. This receptors can interact with various TRAF family proteins, through which this receptor induces the activation of NF-kappa B and MAPK8/JNK. This receptor and its ligand are important regulators of the interaction between T cells and dendritic cells. This receptor is also an essential mediator for osteoclast and lymph node development. Mutations at this locus have been associated with familial expansile osteolysis, autosomal recessive osteopetrosis, and Paget disease of bone. Alternatively spliced transcript variants have been described for this locus.,TNFRSF11A,CD265,FEO,LOH18CR1,ODFR,OFE,OPTB7,OSTS,PDB2,RANK,TRANCER,Signal Transduction,Cell Biology & Developmental Biology,Cytoskeleton,Extracellular Matrix,Bone,Growth factor,TNF,Immunology & Inflammation,CD markers,Cytokines,TNF,NF-kB Signaling Pathway,Cell Intrinsic Innate Immunity Signaling Pathway,Cardiovascular,TNFRSF11A</p>
Molecular Weight:	28 kDa/32 kDa/36 kDa/56 kDa/64 kDa/66 kDa
Gene ID:	8792
UniProt:	Q9Y6Q6
Pathways:	NF-kappaB Signaling

Application Details

Application Notes:	WB,1:1000 - 1:2000,IHC,1:100 - 1:100,IF,1:50 - 1:100
Restrictions:	For Research Use only

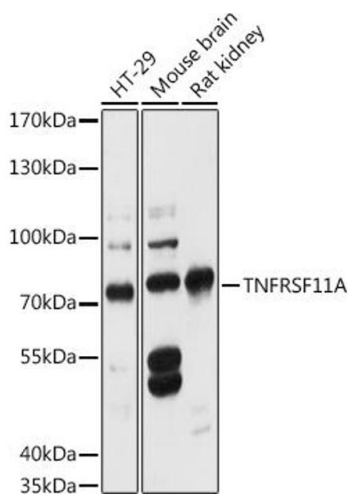
Handling

Format:	Liquid
Buffer:	PBS with 0.02 % sodium azide,50 % glycerol, pH 7.3.
Preservative:	Sodium azide
Precaution of Use:	This product contains Sodium azide: a POISONOUS AND HAZARDOUS SUBSTANCE which should be handled by trained staff only.
Storage:	-20 °C
Storage Comment:	Store at -20°C. Avoid freeze / thaw cycles.



Immunofluorescence

Image 1. Immunofluorescence analysis of L929 cells using TNFRSF11A Polyclonal Antibody (ABIN6127588, ABIN6149309, ABIN6149311 and ABIN6216817) at dilution of 1:100 (40x lens). Blue: DAPI for nuclear staining.



Western Blotting

Image 2. Western blot analysis of extracts of various cell lines, using TNFRSF11A antibody (ABIN6127588, ABIN6149309, ABIN6149311 and ABIN6216817) at 1:3000 dilution. Secondary antibody: HRP Goat Anti-Rabbit IgG (H+L) (ABIN1684268 and ABIN3020597) at 1:10000 dilution. Lysates/proteins: 25 µg per lane. Blocking buffer: 3 % nonfat dry milk in TBST. Detection: ECL Basic Kit (RM00020). Exposure time: 30s.