



Datasheet for ABIN6149382
anti-TOMM20 antibody (AA 20-145)



[Go to Product page](#)

9 Images

Overview

Quantity:	100 µL
Target:	TOMM20
Binding Specificity:	AA 20-145
Reactivity:	Human
Host:	Rabbit
Clonality:	Polyclonal
Conjugate:	This TOMM20 antibody is un-conjugated
Application:	Western Blotting (WB), Immunohistochemistry (IHC), Immunofluorescence (IF), Immunoprecipitation (IP)

Product Details

Immunogen:	Recombinant fusion protein containing a sequence corresponding to amino acids 20-145 of human TOM20 (NP_055580.1).
Sequence:	YCIYFDRKRR SDPNFKNRLR ERRKKQKLAK ERAGLSKLPD LKDAEAVQKF FLEEIQLGEE LLAQGEYEKG VDHLTNAIAV CGQPQQLLQV LQQTLPVVVF QMLLTKLPPTI SQRIVSAQSL AEDDVE
Isotype:	IgG
Cross-Reactivity:	Human, Mouse, Rat
Characteristics:	Polyclonal Antibodies

Target Details

Target:	TOMM20
---------	--------

Target Details

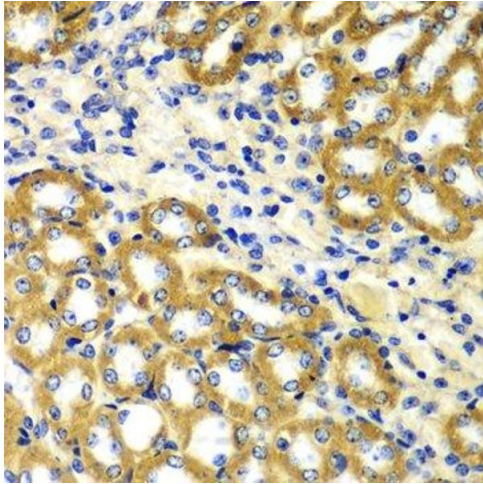
Alternative Name:	TOMM20 (TOMM20 Products)
Background:	Central component of the receptor complex responsible for the recognition and translocation of cytosolically synthesized mitochondrial preproteins. Together with TOM22 functions as the transit peptide receptor at the surface of the mitochondrion outer membrane and facilitates the movement of preproteins into the TOM40 translocation pore (By similarity. Required for the translocation across the mitochondrial outer membrane of cytochrome P450 monooxygenases.,TOMM20,MAS20,MOM19,TOM20,Cancer,Signal Transduction,Endocrine & Metabolism,Mitochondrial metabolism,Mitochondrial Biogenesis,Mitochondrial markers,TOMM20
Molecular Weight:	16 kDa
Gene ID:	9804
UniProt:	Q15388
Pathways:	Unfolded Protein Response

Application Details

Application Notes:	WB,1:500 - 1:2000,IHC,1:50 - 1:200,IF,1:20 - 1:50,IP,1:50 - 1:200
Comment:	HIGH QUALITY
Restrictions:	For Research Use only

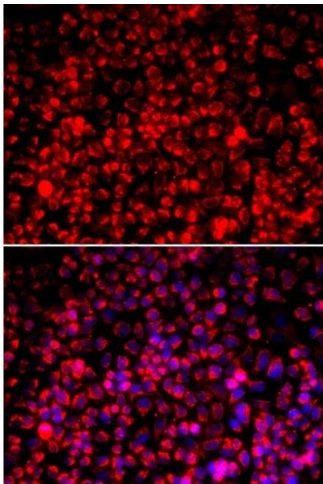
Handling

Format:	Liquid
Buffer:	PBS with 0.02 % sodium azide,50 % glycerol, pH 7.3.
Preservative:	Sodium azide
Precaution of Use:	This product contains Sodium azide: a POISONOUS AND HAZARDOUS SUBSTANCE which should be handled by trained staff only.
Storage:	-20 °C
Storage Comment:	Store at -20°C. Avoid freeze / thaw cycles.



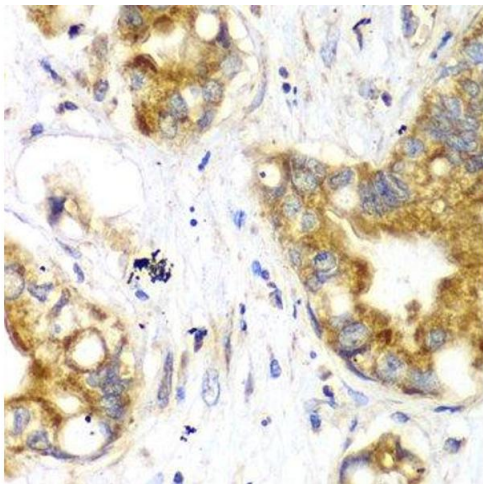
Immunohistochemistry (Paraffin-embedded Sections)

Image 1. Immunohistochemistry of paraffin-embedded mouse kidney using TOMM20 antibody.



Immunofluorescence

Image 2. Immunofluorescence analysis of A549 cells using TOMM20 antibody.



Immunohistochemistry (Paraffin-embedded Sections)

Image 3. Immunohistochemistry of paraffin-embedded human liver cancer using TOMM20 antibody.

Please check the [product details page](#) for more images. Overall 9 images are available for ABIN6149382.